

11 / 12  
Annual  
Report



# The Chairman's Report

By Donald O. Ross

*Remarks delivered at the Preservation Society's Annual Meeting, June 14, 2012*

Good evening and welcome to the 67th annual meeting of The Preservation Society of Newport County.

I follow in the footsteps of some very able, energetic and dedicated past leaders of the Preservation Society. But it is our third Chairman who I wish to single out in particular; a man also known as Mr. Newport by his many fans.

We begin tonight with a tribute to John Winslow, whose recent passing cannot go unmentioned. As the Chairman of the Board between 1977 and 1989, Johnny presided over the maturation of the Preservation Society, following the formative years when the Society evolved to become the steward of significant properties, in addition to its initial mission simply as an advocate for the preservation of historic Newport, purchasing some colonial properties with the goal of stabilizing them, adding restrictive covenants to the deeds and then reselling some of them. At the time he became Chairman, the Society had just gone through an extraordinary period, from 1962 to 1973, when it either acquired or was the recipient of seven major properties, including The Breakers, Rosecliff and Kingscote, these last three having taken place in 1971 and 1972. So during Johnny's tenure, and working with very able volunteers and staff, the Preservation Society oversaw the difficult phase of developing and implementing plans to professionally manage all of these newly acquired properties and make sure the roofs didn't leak. To help pay for the expense of these properties, they had to be opened to the public, and you all probably remember well what downtown Newport looked like in 1973 and 1974 as a large part of Thames Street was torn apart and the wharf area redeveloped. Following all of this redevelopment, the tourists



Donald Buschgans of Lodi Welding directs a crane as it lifts the crown of the north gate back into place at The Breakers after restoration. Photo by Andrea Carneiro

really started coming back to Newport, and the visitation numbers swelled, but in so doing presented a whole series of new issues on how to manage a tourist attraction!

Despite the numerous controversies that ultimately develop with an organization such as the Preservation Society, Johnny soothed fearful residents, successfully approached donors, helped recruit talented staff, and added new blood to the Board of Trustees.

John Winslow was not only the source of a lot of Newport history relating to the former owners of these properties and their families, but he embodied the spirit of never letting the legends and histories of Newport be forgotten. Even after he stepped down from his successful tenure as Chairman, he provided advice for the next generations of Board members. Even today we ask: would Johnny have approved of this?

I am delighted that his wife Helen, who was at his side as a very important volunteer, is here tonight. Helen, of course, was a winner of a Laurel Award for Volunteerism a few years ago. And so I ask for a moment of silence in John Winslow's memory. Thank you.

One of the pleasures of being a part of the Preservation Society is the involvement with a very talented and engaged Board of Trustees. The Trustees have been active participants in committees and special projects, and fully involved in reviewing the major issues our organization faces. Each one has specific fields of expertise which have been extremely helpful to the Preservation Society, and a sincere commitment to Newport. Trudy Coxe, our Executive Director and Chief Executive Officer, has been very effective about communicating with this Board and gathering their thoughts on everything. So an initiative, a change in policy, the structure of an event, the strategic plan—all are the result of the excellent, collaborative efforts of the Board. Thank you.

Now, I want to make some comments about our efforts this past year, starting with the financial side. You will hear details from our Treasurer, but the year just ended was a remarkably successful one financially. We had a rocky beginning, as rioting in the streets of Athens broke out, Congress was stalemated on budget and debt level issues, and confidence dropped, then so did our attendance. Fortunately, we recovered and actually had our best attendance in a decade.



Chief Conservator Jeff Moore points out some of the repairs done on one of the lacquer panels from the breakfast room of The Elms. Photo by Andrea Carneiro

Retail sales reached \$3.1 million, helped in part by a rebranding strategy for the website, now called NewportStyle.net. Thank you, John Rodman, for your leadership with that effort. And thank you to Cynthia O'Malley for your very professional leadership of the overall retail effort. And a special thank you, Angela Moore, our Trustee, who has volunteered her time and expertise with this effort over the last several years.

With Elizabeth Leatherman and Paul Szápáry again as our Chairs, the Annual Fund broke records this past year. Ten years ago, we did not even have an Annual Fund.

I am tremendously pleased and thankful for the number and size of the numerous grants and gifts we received from a broader number of institutional donors, and for a

broad cross section of important projects. Not trying to leave anyone out, but special thanks to the Prince Charitable Trusts, the McBean Charitable Trust, the van Beuren Charitable Foundation, the Champlin Foundations, the Loebs Family Foundation, and the J. Edgar Monroe Foundation. I should mention that the Development Department has been burning the midnight oil, drafting proposals and communicating with these donors and many others.

This time last year we were in the heat of a national competition to win the distinction of being the place that matters most. You probably remember it. It was called "This Place Matters." One hundred sites across America competed for a \$25,000 prize offered by the National Trust for Historic Preservation – winner to be decided by having the most online votes. And we won.

In 2011, we launched the Rosecliff audio tour with resounding success, and total admissions rose as a result. The roll out of that tour brought to completion the master plan for our four most visited houses. Complimentary audio tours of The Breakers, The Elms, Marble House and Rosecliff now offer a complete experience for visitors who tour the Gilded Age properties.

Also last year, a new Servant Life Tour was created for The Elms based on the display of numerous photographs donated by descendants of the staff that worked there. The tour takes a strong and broad historical viewpoint of servant life in America, discussing immigration, labor disputes, the make up of a Gilded Age household, and how servants found employment through family connections—our American version of "Downton Abbey." These broad issues are then balanced by very specific and personal stories of servants who lived and worked at The Elms. Attendance for this tour has tripled since it was revised from the older "Behind the Scenes" tour offered the previous year.

I am also told John Tschirch is working on updating the regular audio tour of The Elms, which was heard by its one millionth visitor this year.

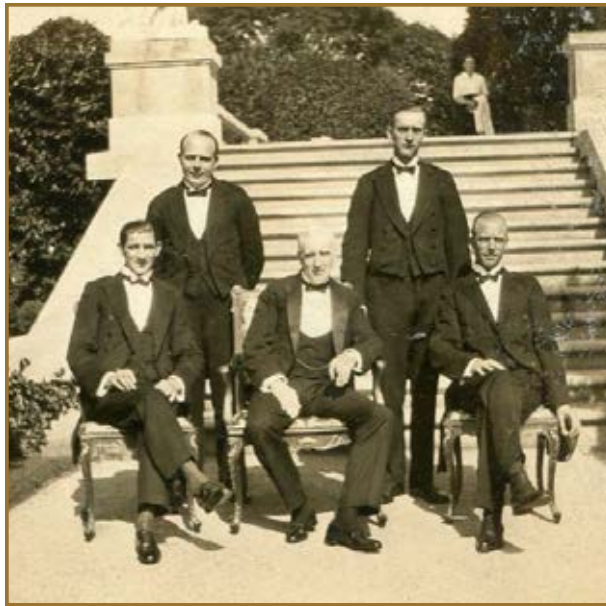
Last year the north gates of The Breakers were restored – the work by Lodi Welding took most of a year and involved having to create from new metal some of the parts which were little more than rust held together with paint. Lodi will be receiving a Laurel Award this evening for their superb craftsmanship.

On the green front, after further drilling deep water wells on the grounds of The Breakers, and thanks to a grant from the Loeb Family Foundation, we successfully proved that we do in fact have the capability to use geothermal heating and cooling to augment the climate inside The Breakers. The engineering is now underway to design the system which we plan to install.

The Hunter House Historic Structures Report, funded by a grant from the van Beuren Charitable Foundation, was completed. Conducted by Wank Adams & Slavin, this report will give us a much better understanding of existing conditions of the timber framing and sagging floors. This is a fascinating study of our first property. It is just astonishing the various uses and owners the house went through over the 200 plus years prior to 1945, all detailed with timelines in this report. Note the way the house changed over time, including the restoration of the front entrance, with the pediment fully restored. This had originally been positioned on the western side, until Charles Follen McKim moved it to another house in the neighborhood in the 1870s.

Our landscapes continue to be one of our proudest achievements. Our gardens and grounds are as much a jewel as any of our buildings. Certainly this is true at Green Animals, where a major garden restoration is underway funded by the Champlin Foundations. Jeff Curtis and his team also made some major improvements to our greenhouses over the winter with a conversion to gas heat which is providing better heating efficiency and real savings.

“This Old House” paid us a visit in this past year. While producing a season series in Rhode Island, Norm Abrams asked Trudy Coxe if she could think of a fun house for them to tour, and she persuaded them to bring a camera and a team to spend a few minutes at The Elms. Well, it turned out to be a seven-person crew, and they took all day to shoot. The resulting ten minute segment has now appeared on PBS stations across the



The butler and footmen of The Elms posing near the terrace, circa 1920. From The Elms Servant Life Tour. Photo courtesy of Margaret Morello

country and is seen on the “This Old House” website.

Some other important achievements of the last year:

We created the first full-time Collections Manager position. The hallmark of a well-run museum and historic site, collections management is vital to our stewardship mission. Our Collections Manager, Miranda Peters, joined us last June and has embarked on a much-needed reorganization of the archives, and will begin a complete re-inventory project of our 52,000 object collection over the next two years. Also, over time our collections will be available for scholarly viewing on a website.

Last year much planning was done for an Aesthetic Movement exhibit at the Isaac Bell House,

drawing from the collections of Kingscote and Chateau-sur-Mer. This summer the Isaac Bell House is featuring a display of ceramics, furniture, textiles, books, and paintings from the 1880s, a remarkably innovative and progressive period in design history, and the same period that produced the Bell House (in 1883). All objects were selected because they share the same ornament and design motifs as the architectural details of the Bell House.

Also last year, the conservation of the lacquer panels from the breakfast room of The Elms received international attention with the publication of a paper on the subject in the Journal of the Victoria and Albert Museum by our Chief Conservator, Jeff Moore. Jeff will also be presenting on this subject at a conference at the Getty Museum this coming fall.

In keeping with our mission concerning preserving historic Newport, periodically we will weigh in on certain activities which can impact the feel or visibility of the Newport environment. This past year one of the requests from the Rhode Island Historical Preservation and Heritage Commission was to comment on the possibility that the Navy might site a wind farm on their property, starting at the War College area and extending northward. Following meetings involving our Public Policy Committee, we provided a response to the State indicating that, despite our agreement that alternative energy sources such as wind development are desirable, we would be very opposed to any wind turbines sited around the historic War College and adjacent areas, and that the view from the water would be irreparably damaged by the construction of 450-foot towers. At this point, we have not heard any further comments, although energy saving on the Navy properties is clearly in everyone’s best interest.

Last year, we also won some awards.....as did some of our professionals.

We received the Rhody Award for the Chateau-sur-Mer restoration from the Rhode Island Historical Preservation and Heritage Commission. Curt Genga and Trustee Bill Wilson accepted that award.

The City of Newport honored us with a citation for our involvement with the new historic markers which you see on Bellevue Avenue and some other locations. Thanks to former trustee Ron Fleming who funded the effort. And thanks to our partners Salve Regina, Newport Restoration Foundation, Aram Garabedian and former Trustee David Bazarsky as well.

On the individual front, John Tschirch was inducted as an Honorary Member of the Garden Club of America. John also scripted much of the historic markers as well.

Lucy Kinsley, a manager in the Museum Experience Department, won one of the Rhode Island Tourism Employee of the Year Awards from the RI Hospitality Association.

And Miranda Peters, featured earlier, was honored as an Emerging Museum Professional Fellow for the American Association of Museums 2012 Annual Meeting.

Not to be outdone, over the winter Roger Williams University announced that they would be giving Trudy Coxe an honorary degree at their graduation festivities: Honoris Causa-Doctor of Humane Letters. Congratulations, Trudy.

Another huge form of recognition came our way this past winter. I am pleased to announce that we have been selected to provide a Loan Exhibition to the Winter Antiques Show at the Armory in New York City in January of 2013. The selection of which items from our collections will be featured as you enter the New York Armory on Park Avenue is in process. Past exhibitors have been Historic Charleston, the American Wing at The Met, Historic New England and Mount Vernon. Actually, our selection is not without precedent; the Preservation Society was an exhibitor some 30 years ago.

One of the things I think everyone believes we do well is to hold great events. Last year's August evening event I thought was one of the most beautifully planned and executed ever. Our volunteer committee, led by Barbara Chapman, truly did a great job. But I want to single out the old pro Phil Pelletier for



The Elms was the setting for a Midsummer Night's Dream for the 2011 dinner dance.  
Photo by corbettphotography.net

continuing to excel in being the number one event planner in the country.

In closing, I want to mention some comments made by two individuals who are not Newporters, but experts in the various fields that are important to us. Pierre-Andre Lablaude, the Chief Architect of Versailles, and the author of the Gardens of Versailles, said in some new material that we plan to use that the "Preservation Society's holdings are so significant because they reveal the history of a community, the history of a society, and the history of taste."

From Richard Guy Wilson, who is Chair of the University of Virginia's Department of Architectural History: "Newport has more great architecture per

square inch than any other place in the country, possibly in the world. Every building under the Preservation Society's stewardship answers a fundamental, endlessly relevant American question: Who are we? What do we have to say? What do we stand for?"

Over the last couple of years the Board has spent a great deal of time on strategic planning ---laying out the things we must do over the next few years. We are not looking at acquisitions of new properties, but enhancing our role as stewards of these great properties and collections, and in providing the research and education that go along with them. To support these efforts and our endowment, we will need to raise additional funds. Rather than do this piecemeal, we are prioritizing our needs and are committed to raising funds through a well coordinated comprehensive campaign. This will go on for an extended period of time. Trudy will have a bit more to say on the subject.

Thank you for listening, and thank you for your support of The Preservation Society of Newport County. Thanks to our wonderful staff here at the Preservation Society who make it all happen. And lastly, thank you to a truly devoted and engaged Board of Trustees. It is the Board that has done a sensational job thinking and discussing what our priorities and goals should be and how we are going to achieve them.

# CEO & Executive Director's Report

By Trudy Coxé

*Remarks delivered at the Preservation Society's Annual Meeting, June 14, 2012*



Photo by corbethphotography.net

Thank you to all who are attending tonight's meeting - especially to those who have driven here from afar. I know that if you came from New York or Boston, all your cares slipped away when you saw your first view of Narragansett Bay or First Beach. And, if you're local, nothing is more comforting than the aroma of privet hedges along Bellevue Avenue. These are the things that make Newport special. And Rosecliff is a great place to be tonight.

In a few weeks the America's Cup trials will be held just off Fort Adams, marking the return of an 80-plus-year-old sailing tradition that sadly vanished when the Cup was handed over to the Australians on the Marble House terrace back in 1983. Granted, these trials are not the actual America's Cup races, nor are the boats anything like the J boats from the 30s, or the 12-meters from the 1960s. These will be new and different boats and it's hard for us "seasoned" folks to adjust our minds to this change, but it is exciting. What's important is that the spotlight will be on Newport, and it's a chance to remind people all over the world of Newport's international reputation as a sailing capital.

On Saturday, June 30, the skippers and crews will gather at The Breakers for the awards ceremony. This is not the first time for an America's Cup event at The Breakers.

It was 50 years ago, in September of 1962, when President and Mrs. Kennedy were here to watch *Gretel* compete against *Weatherly* from the deck of the destroyer *USS Joseph P. Kennedy*, named after the president's older brother who died in World War II. As part of the race festivities the Kennedys attended a dinner at The Breakers, hosted by the ambassador from Australia and attended by the ambassadors of Great Britain, Portugal and Peru. At the dinner President Kennedy made the following, inspiring, my most-favorite-quote-in-the-world remarks:

"I really don't know why it is that all of us are so committed to the sea, except I think it is in addition to the fact that the sea changes and the light changes, and ships change, it is because we all came from the sea. And it is an interesting biological fact that all of us have, in our veins the exact same percentage of salt in our blood, in our sweat, in our tears. We are tied to the ocean. And when we go back to the sea, whether it is to sail or to watch it we are going back from whence we came."

Since we all here love the sea, I suspect that this quote hits you as hard as it does me. And I'm going to take a flyer on the fact that few of you knew that this inspirational quote was motivated by an America's Cup race, that it was delivered by a president, and that it was first spoken at The Breakers.



Plans are underway to use The Elms Carriage House as a Scholars Center for visiting Fellows. Photo by Andrea Carneiro

The point here is that one of the most important reasons organizations like the Preservation Society exist is to keep stories like President Kennedy speaking at The Breakers alive; stories of our heritage; stories that, if we continue to tell them, will not be lost—like those beautiful J boats that were sold for scrap and today exist only in old photographs and news reels of the era. We've spent a lot of time this year collecting stories, which is just a part of our overall mission.

As you have heard, it's been an incredibly productive, successful year on all fronts, from record-breaking attendance, to significant restoration, to educational programming, to fundraising. We could not do it without our volunteers, our fantastic staff and the superb leadership of Don Ross and the entire Board of Trustees. They are the ones who move the Preservation Society forward, keeping Newport's heritage alive.

Tonight I want to spend a few minutes talking about our agenda for the year ahead.

One of our key strategies for the future is the creation of a Welcome Center at The Breakers, to replace the tent—a promise we made to the city more than a decade ago. Since most of you have been to our tent, you know why we need a permanent Welcome Center.

1) It gives our visitors a chance to ask live people about what there is to do in Newport - beyond The Breakers - and a chance to decompress, regroup, and catch their breath.

2) It gives the Preservation Society a chance to grow our membership and tell the story of Newport's history, which helps to generate the funds needed to preserve it. In fact, the tent has generated an additional \$16 million in the last 11 years, and these funds have been imperative to save our buildings.

The current tent is seasonal—it's hot in the summer and cold in the fall, tough on our staff and visitors. When it rains, it's unusable. It's dusty, so our electronic equipment is always at risk. It's home to squirrels, bees, and birds. And, as one Trustee said recently, when you arrive at The Breakers it looks like you're going to a Boy Scout Jamboree. And then, there are the bathrooms.

The Breakers is one of the most important buildings in the world. First impressions do count. Yet the tent does not allow us to make a good first impression where our story is clear, strong, affirming and uplifting.



Norah Kavanaugh (left) worked as a chambermaid at The Breakers. Her daughter Patricia Coleman (right) is part of the audio tour there, telling stories about her mother's experiences that contribute to the rich history of the house. Coleman photo by Caitlin Emery



I am pleased to announce that, after months of hard work by a Board committee made up of Bill Wilson, Billy Wood Prince, Bernie Gewirz, Monty Burnham and Peter Damon, we have selected the architectural firm of Epstein and Joslin of Cambridge.

Our goal is to replace the tent with something that complements The Breakers and gives our visitors the best first impression they can get.

A second key priority for the upcoming year is to continue our efforts to use The Elms Carriage House as a place for Fellows to live and work. The plans and specs for the restoration are underway right now and the initiative is moving.

Our first two Fellows have been hired: Kaity Ryan, a graduate of Columbia University, will be helping us with our public policy activities over the next year. Alice Dickinson, a graduate of Winterthur, will be doing extensive research on Hunter House in collaboration with an advisory committee of scholars from Winterthur, the MFA Boston and the Met in New York.

Their research will be important to us. There's not a museum conference that doesn't stress that we have to tell our stories well to keep the general public's interest in history and art alive.

Let me give you an example of the power of research and storytelling. This year we uncovered the story of a 17-year-old Irish immigrant, Norah Kavanaugh, who served as a third chamber maid to the Cornelius Vanderbilts, working exclusively upstairs, cleaning the hallways, bedrooms and bathrooms and



A new Welcome Center at The Breakers will eliminate the need for this portable and unsightly restroom trailer.





At the Annual Meeting: Preservation Society Executive Director Trudy Cox, Bryant University President Ronald Machtley, Salve Regina University President Sister Jane Gerey, Roger Williams University President Donald Farish, and Preservation Society Chairman Donald O. Ross.  
Photo by corbettphotography.net

making sure that the linen was fresh each day. We learned that Norah had no patience with immigrants who complained about the United States because she believed that the opportunities here were so great.

Last summer Norah Kavanaugh's daughter, Patricia, with whom we had previously conducted an oral interview, took the audio tour at The Breakers. Listening to her own voice describing her mother's role in the Vanderbilt household touched her, because now her mother, who passed away in 1987, was part of history.

Our scholarship is external as well. Last fall we were approached by Roger Williams University to host a semester-long, on-site course here in Newport for students studying historic preservation. More than 20 students met here every Wednesday to learn firsthand what it takes to run a preservation organization. They are the next generation of professional leaders. They took tours and heard from Curt Genga about construction challenges, Jeff Moore about conservation at work, and Katherine Long about how to raise money.

I have to tell you, we had a ball as did the students, and what helped drive it forward were Roger Williams' President, Don Farish, and his wife, Maia. Both are here tonight, and I commend them for helping to guarantee that the next generation of preservation leaders is receiving the best possible training and guidance we can give.

We're involved in other collaborations as well:

- There's the collaboration with Salve Regina University and the Bellevue-Ochre Point Neighborhood Association which has had some great results, the most recent being that the new lights on Bellevue Avenue are historic in their look.

- There's a partnership with the Community College of Rhode Island in which faculty and students are working with us to improve our retail website to increase revenues from online shopping. Again, we had support from the top – from CCRI President Ray DiPasquale who was there in the planning meetings for this project

- And a final collaboration is the NEH-sponsored Big Read project, with the Newport Public Library, the Boys and Girls Club and senior citizen centers designed to promote reading and literacy. The two books are Thornton Wilder's *Our Town* and *The Bridge of San Luis Rey* and there are plenty of ways for everyone here to get involved. Go to the website.

Finally, a big part of our upcoming year will be devoted to getting ready for the Winter Antiques Show in January 2013 at the Armory on Park Avenue in Manhattan. The Preservation Society—in a very competitive process—was selected to be the loan exhibitor for the show, meaning that we will have our best objects on display, and we'll be the first thing you see when you enter the Armory. The show is the premier antiques show in the country—attended by the connoisseurs and collectors—and it helps elevate our collection, telling the story of who we are. I hope you will all plan to attend.

In a publication that the Preservation Society is creating, Dede Wilsey, who is the President of the Board of Trustees of the Fine Arts Museums in San Francisco, which comprises the De Young Museum and the Legion of Honor, and who serves on our International Council, said the following about the tangible value of history:

“Why preserve the Louvre? Why preserve Buckingham Palace? Why read Roman history? Because it teaches us something important. It teaches us about a way of life – and by studying it we come to understand the way we live now. The study of buildings and objects helps us understand what has changed. What have we lost? What have we gained? To answer those questions, we need expertly preserved resources like the Preservation Society's properties. We have to give our history the respect, the value, that it is due.”

What a great testimonial from a supporter of ours. And what a great testimonial it is to have all of you here tonight. We are only as strong, and our collaborations are only as strong, as you make us be. The Preservation Society is on the move. Our year ahead is filled with promise and variety.

*The Preservation Society  
is on the move.*



# Treasurer's Report

By Monty Burnham

*Remarks delivered at the Preservation Society's Annual Meeting, June 14, 2012*

When I spoke to you at last year's Annual Meeting, I warned that the new fiscal year – the one I'm reporting on now – had begun very sluggishly, in part due to unseasonably cold and rainy weather. I also told you that it's in the nature of accountants to be pessimistic, and if we're not worried about something specific, we're worried that we've overlooked something worth worrying about.

I'm happy to report that, while sluggish performance continued for several more months, when beautiful weather and signs of economic growth returned in the second half, the fiscal year ended March 31, 2012 was another financial success.

While revenues, excluding endowment draw, were slightly below budget thanks to Hurricane Irene, they were still \$320,000 higher than last year. Total visits increased 1.5% to almost 813,000, the largest number in a decade. This is on top of the 2.7% increase in visits which we experienced during the fiscal year ended 3/31/2010.

These numbers explain our very high standing in attendance figures, when compared to other New England cultural institutions. They are a tribute to the caliber of the properties for which we are responsible as well as to the outstanding staff work which goes into their presentation. The effect on revenue follows this trend.

Ticket revenue went up 3.4%, thanks both to mild winter weather and the decision to open the five largest and most popular houses in mid-March rather than early April. Store sales increased 5% over last year, and revenue from fundraising events increased 6.5%. Group tour revenue exceeded \$1 million for the second consecutive year, and we expect to break that record again this year.

The Annual Fund, again co-chaired by Elizabeth Leatherman and Paul Szápáry, amazed us all by exceeding its \$750,000 goal by \$62,000. The Annual Fund raised a total of \$812,000, which represents a stunning 22% increase over the prior fiscal year's record of \$662,000. Thank you to everyone who contributed, and especially to Elizabeth and Paul, who have once again most generously agreed to chair next year's campaign.

In membership, we ended the year with over 26,000 members, and revenue reached \$882,000, a 3.5% increase over the prior year. Both of these are figures are new highs.

One area that has been hit hard by the soft economy, however, is rentals, particularly corporate rentals. The special events staff has worked hard to generate new business in this area, but there isn't much that can be done until the economy improves.

There is good news on the expense side. Direct operating expenses were approximately \$400,000 less than budget.

This means we were able to generate the cash we need to continue paying down funds we borrowed in previous years.

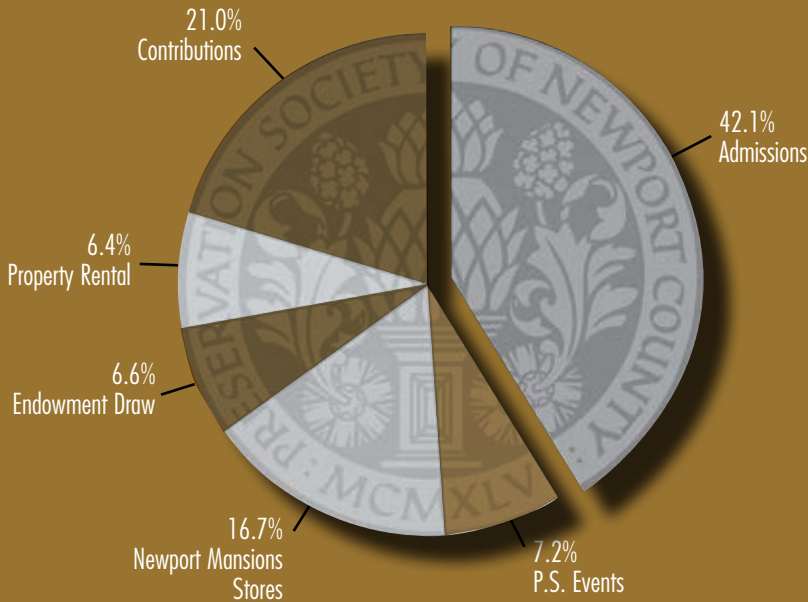
These funds were used to launch The Breakers audio tour, improve The Breakers parking lot and store, restore the roof at Chateau-sur-Mer, and make other needed improvements. As we all know, the cost of borrowing is currently at an historic low, but at some point rates will increase and we are sensitive to our fiduciary responsibility and the need to be disciplined about reducing debt so we are not hit with high interest costs when rates do rise.

Our largest capital expenditure this past year was the implementation of the Rosecliff audio tour, which was inaugurated on April 2, 2011. Ninety-two percent of tours taken now are audio tours and we know from comments on TripAdvisor and other internet sites that audio tours are very popular with visitors.

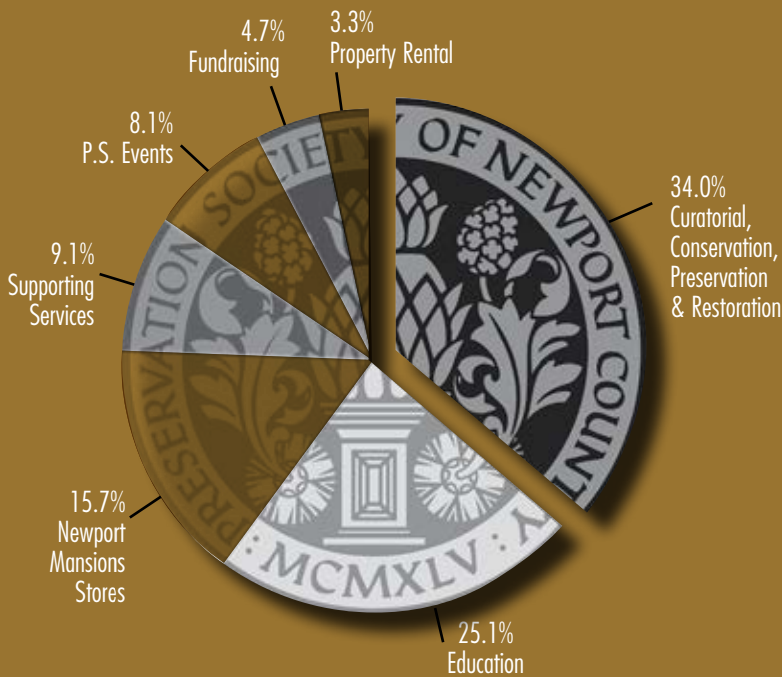
During calendar year 2011, the Preservation Society paid over \$7.4 million in compensation to 413 individuals, an increase of \$420,000 over 2010. We had 196 FTEs, or full-time equivalent employees, a decline of one from last year.

The strong trend with which we ended this past fiscal year has continued in the first two and a half months of the new fiscal year. Through June 10, total visits are up 19.7% over the same period in 2011, and 15% over the same period in 2010. We checked these figures several times, as you can imagine, since they are so glorious we were certain that we must be overlooking something. They do seem to be correct and one hopes that the momentum will be maintained. That said, gas prices could always rise...or something else is missing which we have not yet noticed on the horizon, because all of this is good...and we must worry.

## REVENUE



|                          |       |
|--------------------------|-------|
| Admissions               | 42.1% |
| Contributions & Interest | 21.0% |
| Newport Mansions Stores  | 16.7% |
| Endowment Draw           | 6.6%  |
| Property Rental          | 6.4%  |
| Pres. Society Events     | 7.2%  |



## EXPENSES

|  |       |
|--|-------|
| Curatorial, Conservation, Preservation & Restoration | 34.0% |
| Education  | 25.1% |
| Newport Mansions Stores                              | 15.7% |
| Supporting Services                                  | 9.1%  |
| Pres. Society Events                                 | 8.1%  |
| Fundraising  | 4.7%  |
| Property Rental                                      | 3.3%  |

# *Laurel Awards*

*In Recognition of Outstanding Service,  
Artisanship or Leadership*



William Wilson presented the Laurel Award to Richard Buschgans and Donald Buschgans.

**Richard Buschgans & Donald  
Buschgans/Lodi Welding**

**For Artisanship**

In recognition of their exceptional efforts  
in restoring the gates of The Breakers.



Philip Bilden accepted the Laurel Award from Arthur Murphy.

**Philip & Patricia Bilden**

**For Volunteerism**

In recognition of their leadership in  
restoring the natural vistas of Ocean Drive.



Robert Bartlett accepted his Laurel Award from Eaddo Kiernan.

**Robert A. Bartlett, Jr.**

**For Horticulture**

In recognition of his expertise and vast  
horticultural contributions to Newport.



Dayton Carr and Carol Ballard



James Coleman and Ala Isham

# Donors

*April 1, 2011 – March 31, 2012*

The Preservation Society of Newport County is grateful to its many members and friends for your ongoing support. Your generosity makes it possible for us to preserve Newport's architectural and cultural heritage.



Maureen Donnell and Diana Prince

## INDIVIDUAL GIFTS

### RICHARD MORRIS HUNT CIRCLE

#### \$100,000 and above

Mr. and Mrs. A. Leslie Ballard  
Mr. and Mrs. Bernard S. Gewitz

### McKIM, MEAD & WHITE CIRCLE

#### \$50,000-\$99,999

The Estate of Elizabeth A. Burton  
Mr. Dayton T. Carr  
Mr. David B. Ford  
Mrs. Alfred S. Wilsey

### HORACE TRUMBAUER CIRCLE

#### \$25,000-49,999

Mrs. Helen D. Buchanan and  
Mr. and Mrs. Richard I. Burnham  
Mr. and Mrs. Duncan A. Chapman  
Mr. and Mrs. James J. Coleman, Jr.  
Mr. and Mrs. Glenn M. Darden  
Mr. and Mrs. Peter D. Kiernan III  
Mr. and Mrs. David E. P. Lindh  
Mr. and Mrs. Eugene B. Roberts, Jr.  
Anonymous

## OGDEN CODMAN CIRCLE

#### \$10,000-\$24,999

Mrs. Russell B. Aitken  
Mrs. Thomas W. Blake  
Dr. John and Lady Romayne Bockstoe  
Mr. and Mrs. James F. Carlin  
Mrs. Alexander C. Cushing  
Mr. George David  
Mrs. John R. Donnell  
Mr. Ronald Lee Fleming  
Mr. and Mrs. Robert T. Galkin  
Mr. and Mrs. Robert M. Grace  
The Honorable Esmond V. Harmsworth  
Mr. and Mrs. Edmond de La Haye Jouselin  
Elizabeth J. M. Prince  
Mr. and Mrs. John Purdy  
The Estate of Mr. Lloyd M. Rives\*  
James and Alice Ross  
Mr. and Mrs. Charles M. Royce  
Mr. and Mrs. A. Theodore Stautberg, Jr.  
Mr. and Mrs. Archbold D. van Beuren  
Mr. and Mrs. Guy F. C. Van Pelt  
Mr. and Mrs. Frederick J. Warren



David Ford and John Peixinho



James Berwind and Susan Ross



David Diefenbach and Angela Fischer



Maureen Chilton and Eaddo Kiernan



Billy & Sharon Wood Prince



Susan Stautberg and Dodo Hamilton



Andrea van Beuren and AnaPaula Watson

CHAIRMAN'S CIRCLE

\$5,000-\$9,999

- Mr. and Mrs. Alexander Auersperg
- Dr. Holly M. Bannister and Mr. Douglas L. Newhouse
- Mr. and Mrs. Allan Beitchman
- Mr. and Mrs. Ronald Bennett
- Mr. and Mrs. Mortimer Berkowitz III
- Mr. and Mrs. Mark J. Brice
- Mr. and Mrs. John W. Brooks, Jr.
- Mr. and Mrs. Peter S. Damon
- William P. and Jacalyn C. Egan - The Duniry Foundation
- Mr. and Mrs. Michael A. Fernandez
- Dr. and Mrs. Edwin G. Fischer / The Hope Foundation
- Mr. Stephen L. Glascock and Ms. Barbara van Beuren
- Mrs. Robert H. I. Goddard
- Mr. and Mrs. Paul J. S. Haigney
- Joseph W. Hammer and Margery Hamlen
- Mr. George C. Hepting
- Mr. and Mrs. George G. Herrick
- Mr. and Mrs. Pierre duPont Irving
- Mr. and Mrs. Ralph Heyward Isham
- M. R. Kidder Charitable Fund
- Mrs. Belinda Kielland
- Mrs. Donald Breck Lamont
- Mr. and Mrs. William L. Leatherman
- Mr. Richard C. Loeb, Jr.
- Mrs. Edmund Calvert Lynch, Jr.
- Mr. Peter E. Madden
- Mr. and Mrs. Michael H. Mariner
- Mr. and Mrs. William M. Matthews
- Mr. and Mrs. Samuel M. Mencoff
- The Estate of Victor L. Persbacker
- Mr. and Mrs. Louis G. Piancone
- Mr. and Mrs. Frederick H. Prince IV
- Mr. and Mrs. Frank N. Ray
- Mr. and Mrs. Andrew K. Reilly
- Mr. and Mrs. Donald O. Ross
- Mr. Michael H. Sherman
- Mr. Paul L. Szápáry
- Mr. and Mrs. Charles H. Townsend
- Karl and Teryn Weintz
- Mr. and Mrs. William N. Wood Prince

HERITAGE CIRCLE

\$2,500-\$4,999

- Ms. Sherrie Bassignani
- Mr. and Mrs. Richard L. Brickley, Jr.
- Captain and Mrs. Nicholas Brown
- Mr. and Mrs. James M. Burress
- Capt. and Mrs. W. L. Caldwell, Jr.
- Ms. Andrea Carneiro
- Ms. Candace A. Clark and Mr. Edmund S. Borkoski II
- Mr. and Mrs. John P. Collins
- Ms. Trudy Coxe and Mr. James Gaffney
- Mr. Louis A. Fazzano
- Mr. and Mrs. James C. Flores
- Henrietta Fore and Marta Babson
- Mr. and Mrs. Michael K. Gewirtz
- Mr. and Mrs. Peter W. Gonzalez
- Mr. Ben Gordon
- Mr. and Mrs. James B. Gubelmann
- Mr. and Mrs. S. Matthews V. Hamilton, Jr.
- Rosemary and Torrence Harder
- Mr. and Mrs. J. Colin Keith
- The Honorable and Mrs. Ronald K. Machtley
- Mr. and Mrs. John K. Menoudakos
- Mr. and Mrs. James E. Moore
- Mr. and Mrs. Ronald Oliver
- Mr. and Mrs. Mark Rickabaugh
- Ms. Carol Riley
- Ms. Lorraine Rogove
- Mrs. Howard Ross
- Mr. Nicholas B. Scheetz
- Mr. and Mrs. Jay R. Schochet
- Mr. and Mrs. J. Laurence Sheerin
- Mr. and Mrs. David P. Sheffield
- Mr. and Mrs. Joseph F. Sullivan
- Foundation Fund of Central Carolina Community Foundation
- Mr. and Mrs. Pieter Taselaar
- The Estate of Brown Taylor
- Mr. and Mrs. John A. van Beuren
- Mr. and Mrs. William Wallace
- Sarah A. Whittemore
- Mr. and Mrs. Jay R. Wilson
- Mr. and Mrs. William F. Wilson

## BENEFACTOR

## \$1,000-\$2,499

Ms. Marie Adamo  
 Mrs. Camilla C. Anderson and  
 Ms. Christina Anderson  
 Mr. and Mrs. John W. Annan  
 Mr. and Mrs. Theodore Harkness Ashford  
 Mrs. Theodora Aspergren  
 Mrs. Marianna J. Baker  
 Mr. and Mrs. John F. Ball  
 Ms. Brittain Bardes  
 Mr. and Mrs. William P. Barrack  
 Mr. and Mrs. Robert A. Bartlett, Jr.  
 Mr. and Mrs. Robert A. Beaver  
 Mrs. Susan H. Belt  
 Mr. and Mrs. Alexander Berk  
 Ms. Sylvia Bertz  
 Mr. and Mrs. John S. Bevan  
 Mr. and Mrs. Philip Bilden  
 Mr. George C. Bitting  
 Mr. and Mrs. John F. Bohan  
 Mr. and Mrs. Paul J. Bohan  
 Mr. and Mrs. Leslie Bowen  
 Mr. and Mrs. Hallam Boyd, Jr.  
 Mr. and Mrs. David L. Brodsky  
 Mrs. Ruth Hale Buchanan  
 Mr. Joseph Calderale  
 Martha and James Chadwick  
 Mr. and Mrs. Robert Chapman  
 Mrs. E. Taylor Chewing  
 Ms. Donna Civitello and  
 Mr. Robert Carter  
 Mr. and Mrs. George E. Clark, Jr.  
 Ms. Francine Coffey  
 Ms. Wylene Commander and  
 Mr. David L. Van Schaick  
 Mr. and Mrs. Richard H. Comstock, Jr.  
 Conese Foundation  
 Ms. Caroline E. Considine  
 Mr. John S. Dalsheim  
 Mr. and Mrs. David W. Dangremond  
 Mr. and Mrs. John R. Danieli  
 Michael and Ginger Delfino  
 Ms. Melanie Delman  
 Ms. Mary Dery  
 Erica and Vin DiBona  
 Mr. Terry L. Dickinson  
 Mr. and Mrs. C. Mathews Dick, Jr.  
 Mr. Michael Dury  
 Mr. Howard Eisenberg and  
 Ms. Doris Zografos  
 Mr. and Mrs. Howard A. Fafard  
 Mr. Jared Feldman

## BENEFACTOR

\$1,000-\$2,499 *continued*

Mr. and Mrs. Richard D. Field  
 Mrs. Katherine D. Findlay  
 Mrs. George Edward Ford  
 Mr. and Mrs. Henry N. Foster  
 Jae and John H. French II  
 Mr. Curtis H. Genga  
 Mr. and Mrs. Steven Gewirz  
 Mr. and Mrs. L. Martin Gibbs  
 Mr. and Mrs. Thomas F. Gibbane  
 Mr. and Mrs. Thomas P. I. Goddard  
 El Conquistador Raymond Grenon  
 Mr. and Mrs. Donald Gross  
 Mr. and Mrs. Peter Guiffreda  
 Mr. and Mrs. Charles B. Harper III  
 Wendy and Edward Harvey  
 Mrs. Edward F. Herrlinger  
 Mr. and Mrs. Peter Heydon  
 Mr. and Mrs. Charles C. Hickox  
 Mr. James A. Hixon and  
 Ms. Kelly Conway  
 Mr. and Mrs. Mark Hull  
 Mr. and Mrs. Frederick H. Humphreys  
 Mrs. Richard F. Hunnewell  
 Ms. Ilisa Hurowitz  
 Ms. Dodie Kazanjian and  
 Mr. Calvin Tomkins  
 Mrs. Elena Kissel  
 Mr. and Mrs. David F. Kleeman  
 Mr. and Mrs. Christopher G. Knoll  
 Mr. and Mrs. Steven Kumble  
 Mr. and Mrs. Michael H. Lanza  
 Mr. and Mrs. Richard Lightburn  
 Mr. and Mrs. David J. Little  
 Mr. and Mrs. Albert G. Lowenthal  
 Mr. and Mrs. William F. Lucey III  
 Mr. Henry S. Lynn, Jr.  
 Dr. Ferdinand E. Massari and  
 Ms. Diane Lapins  
 Mr. Charles T. Matheson  
 Mr. and Mrs. Thomas J. McAndrew, Esq.  
 Ms. Edith S. McBean  
 Mr. and Mrs. Michael P. McDonough  
 The Honorable Juliette C. McLennan  
 Mr. and Mrs. Earl McMillen III  
 Ms. Pauline C. Metcalf  
 Mr. Charles A. Miller III  
 Ms. Lee P. Miller  
 Mr. Joseph Missbrenner  
 Mr. and Mrs. Gary L. Moore  
 Mr. Arthur W. Murphy  
 Mr. and Mrs. Bernard Nemtsov

## BENEFACTOR

\$1,000-\$2,499 *continued*

Mr. and Mrs. Joseph B. Odoerfer  
 Mr. and Mrs. Kenneth M. Ohrstrom  
 Captain Leo N. Orsi, Jr.  
 Miss Romaine Orthwein  
 Mr. and Mrs. Brian Ross Owens  
 Mr. and Mrs. Charles H. Page  
 Mrs. Bettie Pardee  
 Mr. John M. Peixinho  
 Mr. and Mrs. Christopher T. H. Pell  
 Mr. and Mrs. Nicholas L. Pell  
 Mrs. Claiborne C. Pell  
 Mr. and Mrs. Paul A. Perrault  
 Mr. John Petchonka  
 Ms. Patricia M. Peterson and  
 Mr. Torre A. Peterson  
 Ms. Patricia Picano  
 Mr. and Mrs. Robert Pilkington  
 Mr. and Mrs. Tyson C. Reed  
 Dr. and Mrs. James S. Reibel  
 Mrs. Virginia R. Richard  
 Mr. and Mrs. Charles C. Richardson, Jr.  
 Steven and Brooke Richter  
 Ms. Janet L. Robinson  
 Mr. and Mrs. Thomas A. Rodgers II  
 Mr. John G. Rodman  
 Mr. James A. Roehm  
 Mr. and Mrs. Ernst Rothe  
 Ms. Laura Salley  
 Ms. Wendy Schmidt  
 Lorraine and Richard Sebastiao  
 Major General and  
 Mrs. Stephen R. Seiter  
 G. Crossan Seybolt, Jr.  
 Mr. and Mrs. James Shay  
 Mr. and Mrs. Edwin S. Sheffield  
 Buck and Jocelyn Sherman  
 Mr. and Mrs. Jeffrey Siegal  
 Mrs. Karl B. Smith  
 Ms. Jane W. Smith  
 Mr. and Mrs. John Smyth  
 Mrs. Frederick M. Stafford  
 Mr. and Mrs. Paul A. Steinbrenner  
 Ms. Gladys Szápáry  
 Ms. Topsy Taylor  
 Mr. and Mrs. Norman Thomas  
 Mr. and Mrs. Calvin Tomkins  
 Mr. and Mrs. Todd B. Traina  
 Mr. and Mrs. Bruce G. Tucker  
 Mr. and Mrs. A. Markus Van Den Bergh  
 Mr. and Mrs. William M. Vareika

## BENEFACTOR

\$1,000-\$2,499 *continued*

Ms. Lydia Walsh and  
 Dr. Robert Walsh  
 Ms. Estelle Welte  
 VADM and Mrs. Thomas R. Weschler,  
 USN (Ret.)  
 Mr. Michael Wilus and  
 Ms. Lenora Gange  
 Ms. Deborah E. Wiley  
 Ms. Melissa Windish  
 Mrs. John Grenville Winslow  
 Mr. and Mrs. Kenneth R. Woodcock  
 Ms. Elisabeth Woodward  
 Anonymous

## PATRON

## \$500-\$999

Ms. Helen Harting Abell  
 Mrs. Charles Adams  
 Mr. and Mrs. Robert Agnew  
 Mr. and Mrs. Armin B. Allen  
 Mr. and Mrs. Jeffery M. Allen  
 Mr. John Ames  
 Mr. Steven Andersen  
 Richard E. Anderson  
 Ms. Colleen Andrews  
 Mr. Edward Ankudavich and  
 Ms. Rosemary Ponzio  
 Mr. and Mrs. Michael T. Anthony  
 Mr. and Mrs. Charles Anton  
 Mr. and Mrs. Robert Armes  
 Mr. Bob Arnold  
 Mrs. Victoria J. Avery  
 Dr. and Mrs. Richard A. Baker  
 Mrs. Marilyn Bardes  
 Mr. and Mrs. Rafael Bautista  
 David and Carol Bazarzsky  
 Mr. and Mrs. John S. M. Beckwith-Smith  
 Ms. Kathleen G. Beck  
 Mr. John Beebe  
 Mr. Michael Bell  
 Mrs. Roberta Benjamin  
 Mr. and Mrs. Gerald Bernaz  
 Mr. and Mrs. Miles O. Bidwell  
 Mr. and Mrs. Richard N. Bohan  
 Mr. and Mrs. Charles P. Bolton  
 Mr. and Mrs. Charles P. Bonilla  
 Ms. Jean Borkowski  
 Mr. Miles Bradwell  
 Ms. Phyllis Bravo



Muffet Blake, Robert Murray and Mary Van Pelt



Kim &amp; Frank Darden



Lee &amp; Lee DiPietro



Armin Allen and Peter Eltz

## PATRON

\$500-\$999 *continued*

Mr. and Mrs. Richard L. Bready  
 Mr. Rick Bready  
 Mr. James R. Brigham, Jr. Mr. and Mrs. Sebastian Brooke  
 Mr. David Brooks  
 Mr. and Mrs. Josiah Bunting III  
 Mr. and Mrs. David Bush-Brown  
 Mr. and Mrs. Kevin Callinan  
 Mr. and Mrs. Ross S. Cann, Jr.  
 Peter and Rebecca Capodilupo  
 Mr. and Mrs. Edmund F. Capozzi, Sr.  
 Mr. Russell Caramagno  
 Mr. David Carlo  
 Ms. Vivian Carriari  
 Mr. John Cartright  
 Mr. and Mrs. Richard G. Casey  
 Mr. and Mrs. Steven Casper  
 Mr. Andrew Cavaliere  
 Mr. David Champagne  
 Mrs. Robert H. Charles  
 Ms. Lori Cherichella  
 Ms. Tracy Cherry  
 Mr. and Mrs. Howard G. Chilton  
 Ambassador and Mrs. Gene B. Christy  
 Mr. Jim Cilizza  
 Ms. Stephanie Cipriano  
 Mr. and Mrs. John Cloud  
 Mr. Gordon Colby  
 Mr. and Mrs. Lyn L. Comfort  
 Ms. Laura Conley  
 Mr. and Mrs. Ken Coquin  
 Ms. Karyn Corbett  
 Mr. Michael R. Corcoran  
 David J. Correira, Esq.  
 Dr. Mark Corrigan and Dr. Nancy Corrigan  
 Mr. and Mrs. John Cox  
 Mrs. Norey Dotterer Cullen  
 Dr. John Cuttino and Dr. Carolyn Dedrick  
 Mr. and Mrs. Edward N. Dane  
 Ms. Lucy Darden  
 Mr. Peter De Savary  
 Kenneth Decan  
 Mr. and Mrs. Eliot W. Denault  
 Ms. Rebeca Denny  
 Ms. Catherine Denomme  
 Mr. John M. Dewitt  
 Mr. William Dewey and Mr. Donald R. Desrosiers

## PATRON

\$500-\$999 *continued*

Mr. M. David Dial, Jr. and Ms. Linda M. Brotkin  
 Mrs. Patricia R. Dias  
 Mr. Darren-Erik Diaz  
 Mr. and Mrs. Bruce DiPietro  
 Mr. and Mrs. Lee DiPietro  
 Ms. Barbara Dockrill  
 Mr. and Mrs. James A. Doncaster  
 Mr. John F. Donlon  
 Dr. Leo P. Donovan, Jr.  
 Mr. Jerome Donlon  
 Mr. and Mrs. John R. Drexel IV  
 Mr. and Mrs. Gregory Dryer  
 Mr. Elijah Duckworth-Schachter  
 Dr. Linda Durhan and Dr. John P. Opalacz  
 Mr. and Mrs. John G. Duval  
 Mr. Walter Frederick Eayrs  
 Mr. Thomas Eberhardt and Mr. Daniel Burns  
 Mr. and Mrs. Paul C. Eddy  
 Mr. and Mrs. Peter H. Elebash  
 Mrs. Deborah Elliott  
 Mr. and Mrs. David Enstone  
 Mr. and Mrs. A. Lawrence Fagan, Jr.  
 Ms. Anne Fairfax  
 Mr. and Mrs. Mohamad Farzan  
 Mr. John Ferrera and Ms. Kathleen O'Mally  
 Mr. and Mrs. Robert F. Fischer  
 Mr. and Mrs. Russ Fisher  
 Mr. and Mrs. Thomas K. Flynn  
 Mr. and Mrs. Richard H. Dorwaldt  
 Mr. Richard E. Ford  
 Mr. and Mrs. Neal Franking  
 Ms. Lisa Frese  
 Mrs. H. Clay Frick II  
 Mr. and Mrs. Roger Fritz  
 Mr. Ferdinand Fuentes and Mrs. Steven Wiles  
 Jim and Marge Fuller  
 Mr. Jim Gasper  
 Mr. Scott Gaul  
 Mr. Joseph Germinaro  
 Ms. Maria Germano  
 Dr. Lawrence Geuss and Ms. Pamela Lenehan  
 Mr. James Michael Gibson  
 Ms. Lisa Gibson  
 Ms. Leslie Gillette and Mr. Jay Pallis

## PATRON

\$500-\$999 *continued*

Mr. and Mrs. Louis M. Girard  
 Mr. and Mrs. Marc Gordon  
 The Honorable and Mrs. David S. Gordon  
 Dr. and Mrs. John T. Grady  
 Mr. Scott Graham  
 Mr. and Mrs. David Grant  
 Mr. and Mrs. Robert Grasing  
 Mr. Joseph Gratta  
 Mr. and Mrs. Christopher R. Greenman  
 Ms. Jill Gudoin  
 Ms. Nikki Gullickson  
 Mr. and Mrs. Tawfik Hammoud  
 Ms. Laurie Harnisch  
 Mr. and Mrs. Peter W. Harris  
 Ms. Sarah Hartshorn  
 Mrs. Fredericka W. Hazard  
 Mr. and Mrs. Andrew P. Heaney  
 Ms. Rachael Higgins  
 Mr. and Mrs. Allan Hodges  
 Mrs. Anne M. Hogg  
 Ms. Judith Holcomb and Mr. Richard Pope  
 Alexandra Cushing Howard  
 Mr. and Mrs. William N. Hubbard II  
 Ms. Lisa Huffman  
 Captain and Mrs. Don Jagoe  
 Mr. and Mrs. Edward C. Johnson III  
 Mr. John Johnson  
 Mr. Marty Johnson  
 Ms. Linda Karaberis  
 Mr. and Mrs. Roger E. Kass  
 Dr. and Mrs. Edward M. Kaye  
 Mr. and Mrs. Lewis Keen  
 Mr. Rocky Kempenaar  
 Ms. Melissa Kemp  
 Mr. and Mrs. Peter D. Kinder  
 Mr. and Mrs. Timothy Kuhn  
 Ms. Donna Kutz  
 Ms. Eileen Lacorte  
 Mr. and Mrs. Robert Lang  
 Mr. and Mrs. James Lanzillo  
 Mr. and Mrs. Lewis Lapham III  
 Mr. Scott B. Laurans  
 Patricia P. Lawrence  
 Mr. Neal Leaheey  
 Mr. and Mrs. Byron L. LeFlore, Jr.  
 Charles and Roxanne Leighton  
 Mr. and Mrs. Richard Leonard  
 Mr. Marc A. Lewinstein

## PATRON

\$500-\$999 *continued*

Mr. and Mrs. Derek L. Limbocker  
 Mr. and Mrs. Stuart Lindeman  
 Mr. and Mrs. Kenneth M.P. Lindh  
 Colonel Karen D. Lloyd  
 Mr. and Mrs. William Lockett, Jr.  
 Ambassador John L. Loeb, Jr.  
 Mr. and Mrs. Ken Lowrey  
 Mr. Russell R. Macdonnell  
 Mr. and Mrs. Colin A. MacGillivray  
 Mr. Robert B. Mackay  
 Ms. Deborah Magrone  
 Ms. Margaret Mahoney  
 James and Sharon Maida  
 Ms. Olga Malgicheva  
 Mr. and Mrs. Peter L. Malkin  
 Mr. and Mrs. Arthur J. Margolin  
 Mr. Robert C. Marvelle  
 Mr. Michael H. Massey and Ms. Sandra Ourusoff  
 Mr. Salvatore Matera  
 Mr. and Mrs. Frank Mauran IV  
 Mr. and Mrs. John K. McColloch  
 Ms. Christine McDonald  
 Ms. Sheila McEntee and Mr. Darryl B. Hazel  
 Mr. and Mrs. Robert McGinnis  
 Mrs. Margaret J. McMahon and Mrs. Margaret R. McMahon  
 Ms. Lisa Mosbacher Mears  
 Ms. Alyssa Mitchell  
 Mr. and Mrs. Dennis A. Mock  
 Mr. Blair Monroe and Mr. David Perryman  
 Ms. Julie Monte  
 Dr. and Mrs. Michael Montanaro  
 Mr. and Mrs. Don More  
 Ms. Gretchen Morgenson and Mr. Paul Devlin  
 Mr. and Mrs. George F. Moss  
 Ms. Debbie Moura  
 Mr. Austin Mulhern  
 Mr. James Murphy  
 Mr. and Mrs. Michael J. Murray  
 Dr. and Mrs. Timothy Myers  
 Mr. and Mrs. Charles E. Nagel III  
 Mr. Richard A. Nelson and Mr. James C. Michael, Jr.  
 Ms. Bonnie Newman  
 Mr. Michael Numa  
 Ms. Noreen O'Connell  
 Mr. Roderick B. O'Hanley, Jr. and Mr. Richard C. Crisson



## PATRON

\$500-\$999 *continued*

Ms. Cynthia O'Malley  
 Mr. and Mrs. Mark Otterson  
 Mr. Richard S. Palmer  
 Ms. Rachel Pancoe  
 Mrs. Kimberly Paquette  
 Mr. Matt Parent  
 Ms. William Partezana  
 Dr. and Mrs. Thomas R. Patnaude  
 Captain Raul Pedrozo and  
 Captain Stacy A. Pedrozo  
 Mr. Jared Pedjoe  
 Mr. Peter Pennoyer  
 Mr. and Mrs. George Petrovas  
 Mrs. Alberta E. Picozzi  
 Mr. John Pirone  
 Dr. Joseph J. Plaud and  
 Dr. Deborah M. Plaud  
 Mr. Jerald Plouffe  
 Mr. Robert Poirier  
 Mr. and Mrs. Paul Prenoveau  
 Ms. Stephanie Prevost  
 Mr. Michael Purcell  
 Mr. and Mrs. James A. Purviance  
 Ms. Lissa Quinlan  
 Mr. and Mrs. Gregg Radziunas  
 Ms. Jessica Rainka  
 Mr. and Mrs. Walter G. D. Reed  
 Mr. and Mrs. John V. Reey  
 Mr. and Mrs. John T. Reid  
 Ms. Wendy Richardson  
 Ms. Elizabeth Riley  
 Mrs. Sarah Rivard  
 Mr. William Rives  
 Mr. and Mrs. Raymond Rodgers  
 Ms. Laura L. Rose and  
 Mr. William Hall  
 Mr. and Mrs. Amory Ross  
 Miss Leigh Anne Rowinski  
 Mr. and Mrs. Bayard Russell  
 Ms. Deb Russo  
 Ms. Luella Russo  
 Mr. and Mrs. Daniel Ryan  
 Mr. Jeffrey D. Sant  
 Mr. Joseph Satin  
 Ms. Phylis Satin  
 Mr. and Mrs. Benjamin Scott and Family  
 Mr. William Shaw and  
 Mr. Thomas Brace  
 Mrs. Albert K. Sherman  
 Mrs. Cynthia Sherman

## PATRON

\$500-\$999 *continued*

Mr. and Mrs. Timothy A. Shippe  
 Mr. and Mrs. John M. Shufelt  
 Ms. Kelniah Simpson  
 Mr. and Mrs. Robert Sinclair  
 Mr. and Mrs. John Slawenski  
 Mr. and Mrs. Earl E. T. Smith, Jr.  
 Mr. and Mrs. Rodolfo Soriano  
 Mr. Phillip K. Sotel  
 Mr. and Mrs. Duane Souder  
 Mr. Arthur Souza  
 Mrs. Stephen W. Spencer  
 Dr. Samantha Spencer  
 Ms. Angela Squitieri  
 Mr. John Staelin  
 Ms. Eileen Stein  
 Mr. and Mrs. Peter N. Stevens  
 Mr. and Mrs. James P. Stirling  
 Mr. Dennis Stock and Ms. Pia Brady  
 Mr. and Mrs. John W. Stokes II  
 Mr. and Mrs. Patrick Sullivan  
 Mr. and Mrs. Adams Taylor  
 Mr. Gregory Taylor  
 Mr. William Throop  
 Mr. and Mrs. Asheton C. Toland  
 Mr. Steve Towle  
 Mr. George Trochemenko  
 Dr. Poldi Tschirch  
 Mr. and Mrs. Andrew S. Tsimortos  
 Mr. and Mrs. Michael Van Arsdall  
 Ms. Paula-Rose Varca  
 Ms. Louise Ventriglia  
 Mr. and Mrs. William A. Viall  
 Mr. John Vietas  
 Ms. Kathleen Vieweg  
 Lieutenant Commander Philip Voyer  
 Ms. Cathy Wackwitz  
 Mrs. Jephtha H. Wade  
 Mr. and Mrs. Arthur H. Walker  
 Mr. and Mrs. Robert S. Walker  
 Mr. Peter M. Walter  
 Mr. and Mrs. Barclay H. Warburton IV  
 Mr. and Mrs. Andrew Wascom  
 Mr. and Mrs. Kenneth W. Washburn  
 Mr. and Mrs. Bruce R. Watts  
 Mr. and Mrs. Francis J. West  
 Mr. John Westwood  
 Mr. Gerald Williams  
 Ms. Monica Williams  
 Mr. and Mrs. Matthew Wolfe  
 Ms. Sharon Morrow Wollschlager



Debra &amp; Claudio Del Vecchio and Mary Phipps

## PATRON

\$500-\$999 *continued*

Ms. Katharine Woodward  
 Ms. Vicki Woods  
 Mr. Douglas Wurtz  
 Ms. Nancy Wyatt  
 Ms. Marjorie Yashar  
 Mr. and Mrs. Mohamed S. Younes  
 Mr. and Mrs. Steven Younis  
 Anonymous

## STEWARD

\$250-\$499

Janet Aldrich  
 Mr. Brett Allen  
 Ms. Anne Almy  
 Ms. Elizabeth R. Anderson  
 Mr. Caesar Nicholas Anquillare  
 Dr. and Mrs. John Arnold  
 Mr. and Mrs. Thomas Lyman Atkins  
 Mr. and Mrs. Lee C. Bakalarski  
 Mr. L. Eddie Ball  
 Ms. Regina Banks  
 Ms. Ellen Barnes  
 Mrs. William S. Barrack  
 Mr. and Mrs. Jon M. Barrett  
 Ms. Jeanine Barry  
 Ms. Andi Barton  
 Mr. and Mrs. David Curtis Beal  
 Mr. Allen Beavers  
 Mr. and Mrs. Ronald I. Becker  
 Ms. Jessica Becker  
 Mr. John Belfonti  
 Mr. Michael Bergeron  
 Dr. Robert Berrillo and  
 Mr. Jacob Lockett  
 Dr. and Mrs. William Biermann  
 Mr. and Mrs. David Bigatel  
 Ms. Susan Binder  
 Ms. Nancy Bissinger  
 Mr. and Mrs. Frederick L. Bissinger  
 Ms. Lana Bissonette  
 Reine and Tim Bitting  
 Mr. Frank Black and  
 Mr. Tom Hurley  
 Mr. Thomas B. Blake  
 Ms. Sandra G. Bleich  
 Mr. Jeremy Blumenfeld  
 Mr. Corey D. Bobba and  
 Ms. Jacinda Russell  
 Ms. Sandra Bobryk  
 Ms. Christine Boles

## STEWARD

\$250-\$499 *continued*

Mrs. Mary K. Bond  
 Ms. Jennifer Booth  
 Ms. Eleni Bottos  
 Mr. Kenneth Branson and  
 Ms. Debra Davis  
 Mr. and Mrs. Frank Brennan  
 Mr. Harold Briggs, Jr.  
 Mr. and Mrs. John Bright  
 Mr. Brent Broszeit  
 Mr. David Brown  
 Ms. Mary Ann Buckley  
 Ms. Elle Burgess  
 Mr. Mark Bushee  
 Ms. Ruth Lynn Butler  
 Mr. Brian Buttafoco  
 Mr. and Mrs. David J. Buzzeo  
 Mr. and Mrs. Raymond W. Caine, Jr.  
 Ms. Carmela Calafiore  
 Mr. Stephen Caldwell  
 Mr. Calvin Company  
 Mrs. and Mrs. Joseph Camillo  
 Mr. Adam Caper  
 Ms. Michelle Capps  
 Dr. and Mrs. Anthony A. Caputi  
 Mr. David R. Carrington  
 Mr. Joseph Caufield  
 Mr. and Mrs. Gerald F. Cerce  
 Ms. Laura Cernohlavek  
 Mr. John Chaber  
 Ms. Pamela Chapman  
 Dr. and Mrs. Robert M. Chell  
 Ms. Amy Chen  
 Mr. John Southerton S. Clark  
 Mr. Thomas Clarke  
 Mrs. Eleanor Cochran  
 Ms. Christina Cocroft  
 Dr. and Mrs. Thomas Coghlin  
 Ms. Marsha Cohen  
 Mr. Ivan S. Colon  
 Ms. Mary Connor  
 Mr. and Mrs. Robert J. Conologue  
 Ms. Cheryl Conte  
 Mr. and Mrs. Jim Conway  
 Mr. and Mrs. Edward B. Corcoran  
 Mr. and Mrs. Richard B. Corbin III  
 Mr. and Mrs. William W. Corcoran  
 Ms. Michelle Costanza  
 Ms. C. Beth Cotner  
 Mr. and Mrs. Paul Courtemanche



Trudy Coxé, Martha Stewart, and John Tschirch



Robert MacKay, Richard Guy Wilson and Libby O'Connell



Ronald Lee Fleming and Lady Henrietta Spencer-Churchill

## STEWARD

**\$250-499** *continued*

Mr. and Mrs. Patrick Coyle  
 Mr. and Mrs. Grenville Craig  
 Mr. and Mrs. Richard H. Cromwell  
 Laurie Curtin  
 Mr. Frederick A. Cushing and  
 Mrs. Catherine Milinaire  
 Mr. Michael D'Aquila  
 Mr. Charles D'Arezzo  
 Mr. and Mrs. Daniel DaRos  
 Mr. and Mrs. Peter J. Davey  
 Mr. Art Davidson  
 Ms. Lisa Davis  
 Dr. and Mrs. Ronald Davis  
 Mr. and Mrs. Glenn Dawson  
 Mr. and Mrs. Jacques De Labry  
 Ms. Elizabeth Deehan  
 Mr. and Mrs. Steve Della Pietra  
 Ms. Joan Demers  
 Mr. and Mrs. William Dennis  
 Ms. Victoria Desimone  
 Mrs. Jo Anne Diefenthal  
 David Noble Dittman, Jr.  
 Mrs. Janet F. Doda  
 Mr. and Mrs. David A. Donatelli  
 Mr. and Mrs. Timothy M. Donahue  
 Mr. Kevin Donnelly  
 Ms. Donna Doody  
 Mr. Nicholas Doucette  
 Mr. David Douglas  
 Mr. Carl Draucker and  
 Dr. Claire Draucker  
 Ms. Debbie Drechin  
 Mr. and Mrs. Douglas Dreyer  
 Dr. and Mrs. Richard C. Drummond  
 Mr. and Mrs. Stephen P. Duffy  
 Mr. Bartlett S. Dunbar and  
 Ms. Lisa Lewis  
 Mr. and Mrs. Michael Dwares  
 Jeane S. Eddy  
 Mrs. Anne F. Edwards  
 Mrs. Pearl Elion and  
 Mr. Vincent Panella  
 Mr. and Mrs. Harry Elkin  
 Mr. Robert Eydenberg  
 Mr. Jim Fair  
 Ms. Marie T. Faley  
 Mr. and Mrs. Donald Farish  
 Mr. and Mrs. Jeffrey M. Farrar  
 Mr. and Mrs. Paul Fattibene  
 Mr. and Mrs. George David Fenderson  
 Ms. Pat Fenton

## STEWARD

**\$250-499** *continued*

Mr. and Mrs. Bruce Ferguson  
 Mr. and Mrs. William Ferguson, Jr.  
 Ms. Sara Finney  
 Mr. and Mrs. Geoffrey Fiszal  
 Ms. Mary Ellen Flanagan  
 Mr. and Mrs. Peter Flood  
 Jack and Donna Flynn  
 Ms. Pauline Forman  
 Mr. and Mrs. Jeffrey J. Fortin  
 Mr. William H. Foulk, Jr.  
 Mr. and Mrs. Darren Fowlie  
 Mrs. Louis A. Fragola  
 Ms. Natalie Francis  
 Ms. Ann Franzen  
 Mr. and Mrs. Mark Freeman  
 Mr. Thomas Freeman  
 Mr. and Mrs. David Gabree  
 Ms. Pam Gallagher  
 Mr. and Mrs. Douglas S. Garavanta  
 Mr. and Mrs. Richard Garland  
 Ms. Lisa Gardiner and  
 Ms. Stephaine Gardiner  
 Mr. Mark Giambalvo  
 Mr. and Mrs. Richard A. Gill  
 Laura and Wayne Glazier  
 Mr. and Mrs. Carlton Gleason  
 Mr. and Mrs. Sid Gochring  
 Ms. Bella-Marie Goes  
 Ms. Susan J. Gordon  
 Mr. and Mrs. Philip Graceffa  
 Mr. Joseph Grammatico  
 Ms. Susan Grandin  
 Mr. Todd Grantland  
 Ms. Marci Grebstein  
 Dr. Janet Burke Greene  
 Mr. and Mrs. Patrick Greeven  
 Ms. Phoebe Gubelmann  
 Mr. David Guertin  
 Ms. Nicole Guerin  
 Mr. and Mrs. Gerard Guillemot  
 Ms. Barbara Guthrie  
 Mrs. Jessica D. Hagen  
 Mr. and Mrs. Theodore M. Hahn  
 Ms. Kimberly Hamdani  
 Mr. and Mrs. Brian Hanna  
 Mr. and Mrs. Paul Harden  
 Mr. John Harris II  
 Ms. Paige Harris  
 Susan Hatfield  
 Ms. Deborah Hawkes  
 Mrs. Francoise D. Helme

## STEWARD

**\$250-499** *continued*

Mr. and Mrs. Gerald P. Hendrick  
 Mr. and Mrs. Michael J. Henlyshyn  
 Mr. and Mrs. Raymond D. Herrmann  
 Dr. and Mrs. Ronald C. Hillegass  
 Mr. and Mrs. George R. Hinman, Jr.  
 Mr. Thomas Hockaday  
 Ms. Susan Hogan  
 Mr. and Mrs. Bernard Holand  
 Ms. Ann Holmes  
 Ms. Barbara Holt  
 Ms. Cynthia A. Hooper  
 Mr. and Mrs. Robert D. Horgan  
 Mr. and Mrs. Hal Bowen Howard  
 Mr. and Ms. Matthew Hrivnak  
 Ms. Clara Hulburt  
 Mrs. Judith Hushon  
 Ms. Erin Hussein  
 Mr. and Mrs. Thomas Hutchinson  
 Mr. and Mrs. Paul Jablansky  
 Mr. William Jacklin and  
 Ms. Janet Russo-Jacklin  
 Mrs. Mary T. Jackson  
 Mrs. Mary Jacobson  
 Ms. Christine Jasset  
 Mr. Jeffrey Jenkins  
 Captain Doug Johnston  
 Mr. Steven Johnson  
 Ms. Mary E. Jordan  
 Mr. Edward Kalafarski  
 Ms. Marlain Kalapos and  
 Mr. Stephen Ray  
 Mr. and Mrs. Michael Kampfe  
 Miss Melanie Katzmman  
 Mrs. Linda H. Kaufman  
 Ms. Christine Kearns  
 Dr. and Mrs. David L. Keefe  
 Ms. Ellen Kenner  
 Mr. Daniel K. Kinder  
 Mr. and Mrs. Roger H. King, Jr.  
 Mr. Peter King II  
 Mr. and Mrs. Jerome R. Kirby, Jr.  
 Mr. and Mrs. Robert S. Kirk  
 Mr. and Mrs. Robert S. Kissam  
 Ms. Siena Kissel  
 Ms. Marsha Kleinheinz  
 Mr. Gary L. Koller  
 Ms. Linda Kopeikin  
 Mr. and Mrs. W. Paul Krauss  
 Ms. Kristin Kupres and  
 Mr. Richard H. Kazarian  
 Mr. and Mrs. Richard Lacasse  
 Mr. and Mrs. David T. Lachi

## STEWARD

**\$250-499** *continued*

Ms. Michele Landes  
 Ms. Marion Lang  
 Dr. Leena K. Langeland  
 Ms. Allison Laporte  
 Ms. Carol Large  
 Ms. Kathleen Larocco and  
 Ms. Lillian Larocco  
 Mr. Joseph Lastih  
 Ms. Alison Lavoie  
 Mr. and Mrs. Barry A. Lawrence  
 Dr. and Mrs. Neil C. Leerssen  
 Mr. and Mrs. George Lee  
 Ms. Cynthia Legault  
 Ms. Sandra Levine  
 Mr. Thomas Levreault  
 Mr. and Mrs. David P. Leys  
 Mr. and Mrs. Matthew H. Leys  
 Mr. William H. Leys  
 Ms. Elizabeth Lindh  
 Mr. and Mrs. Edward F. Linhares  
 Mr. Rodney Litalien  
 Mrs. Brooks Lobkowicz  
 Mrs. Sarah Lodge  
 Ms. Lisa Lovetzola  
 Mr. and Mrs. Ronald J. Lowenstein  
 Dr. and Mrs. Bruce Lowry  
 Ms. Alexandra Lynch  
 Ms. Anne Maas  
 Ms. Myrna MacDonald  
 Dr. and Mrs. Francis MacKay  
 Mr. Robert Maddock  
 Ms. Rebecca Magnanimo  
 Mr. David T. Maloof and  
 Ms. Jean M. Sweeney  
 Mr. and Mrs. Robert Maloney  
 Mr. and Mrs. Stephen Manning  
 Mr. and Mrs. Dustin Martin  
 Mr. Richard Marashio  
 Mr. and Mrs. Andrew Marcuvitz  
 Mr. and Mrs. David Marcantonio  
 Ms. Deb Marlette  
 Mr. and Mrs. Robert A. Marra  
 Mr. Dan Marshall  
 Mr. Philip C. Marshall  
 Mr. and Mrs. Robert Marvel  
 Mr. Robert Matheson  
 Ms. Louise Mauran Nadler  
 Mr. and Mrs. Frank Mauran III  
 Mr. Stephen Maxson  
 Mr. and Mrs. Peter E. McCarthy  
 Mr. and Mrs. T. Paul McEnroe



Xavier Salomon and Nancy Parker Wilson



Wini &amp; Robert Galkin

## STEWARD

\$250-499 *continued*

Ms. Barbara McGarvey  
 Mr. and Mrs. Michael E. McGhee  
 Ms. Karen Mchaffie  
 Ms. Lynn McRae  
 Mr. Hugh Mellor II and  
 Ms. Jean MacKinnon  
 Mr. Vincent Meoli  
 Ms. Elizabeth Meyer  
 Ms. Christine Midwood  
 Mr. and Mrs. Edward Miller  
 Mr. Edward Montana, Jr.  
 Mr. Charles J. Moore  
 Ms. Candace Morgenstern  
 Mr. and Mrs. Alfred T. Morris, Jr.  
 Mr. and Mrs. Richard Morrison  
 Ms. Marjorie Morrissey  
 Mr. Christopher G. Muenchinger  
 Mr. and Mrs. John D. Muggeridge  
 Dr. and Mrs. Michael S. Murphy  
 Ms. Laura M. Murphy  
 Mr. and Mrs. Raymond F. Murphy, Jr.  
 Mr. William Mayer  
 Ms. Danielle Nascimento  
 Mr. Douglas Nilson  
 Mr. Phillip Noack  
 Mr. Gerald O'Dell  
 Ms. Patricia A. O'Donnell  
 Ms. Diana E. Oehrli  
 Mr. Brian O'Hagen  
 Ms. Carol O'Malley and  
 Mr. Nicholas Harry  
 Mr. Steven O'Neil  
 Mr. Christopher Orthwein  
 Ms. Ruth Orthwein  
 Mr. and Mrs. Ron Ouellet  
 Mr. Michael Paglierani  
 Mr. and Mrs. F. Michael Palmer  
 Mr. and Mrs. John S. Palmer, Jr.  
 Mr. and Mrs. William R. Palombo  
 Mr. Brian Pontarelli  
 Mr. and Mrs. Raymond M. Paquet  
 Mrs. Cortlandt Parker  
 Caitlin Parker and Lindsay Parker  
 Mr. and Mrs. David J. Parnigoni III  
 Ms. Janice Parris  
 Mrs. Carol L. Parsons  
 Mr. Nicholas Passaniti and  
 Ms. Gabriella Cotignola  
 Ms. Kathleen Passareli  
 Mr. and Mrs. Matthew Pearson  
 Ms. Hali Pedersen

## STEWARD

\$250-499 *continued*

Mr. and Mrs. Brian Pelletier  
 Mr. Anthony G. Pennacchi  
 Mr. David Penttila  
 Mr. Steven J. Peterson  
 Ms. Matilda Petrela  
 Mr. Vi Pham  
 Ms. Juanita Phillips  
 Mr. and Mrs. Brian Phillips  
 Mrs. Mary Phipps  
 Mr. Dave Piccoli  
 Dr. John V. Pilitsis  
 Mr. and Mrs. Francois L. Poulet  
 Mr. Lowell G. Powers, Jr.  
 Philanthropic Fund of  
 The Greater Cincinnati Foundation  
 Mr. R. Daniel Prentiss  
 Kevin and Dina Quirk  
 Mr. Brentley Radeloff  
 Mr. Anthony J. Raitano and  
 Dr. Sheila A. Connery  
 Ms. Molly Ransbury  
 Ms. Patricia Rapko and  
 Ms. Katherine Hien  
 Mr. and Mrs. David L. Reed  
 Ms. Leslie Reichert  
 Ms. Diane Relyea  
 Mr. Robert L. Renck, Jr. and  
 Ms. Carol Kahn  
 Ms. Nancy Reynolds  
 Ms. Karen Rhyner  
 Mr. and Mrs. Anthony Ricci  
 Mr. and Mrs. John W. Richmond, Jr.  
 Mr. and Mrs. Craig Richardson  
 Mr. and Mrs. Stuart Rieben  
 Mr. and Mrs. Peter A. Robichaud  
 Mr. Bill Rochelle  
 Ms. Sue Roderick  
 Mr. and Mrs. Christopher K. Roosen  
 Ms. Penny Rosner  
 Ms. Miriam Rosado  
 Mr. and Mrs. Robert D. Rosenberg  
 Ms. Marni Rosenblatt  
 Mr. and Mrs. Thomas Roskelly  
 Mr. and Mrs. George K. Rosner  
 Mr. Andrew Ross and  
 Ms. Leslie S. George  
 Mr. and Mrs. Donald W. Ross  
 Dr. and Mrs. Stephen Rous  
 Mr. Greg Rozsay and  
 Ms. Helene Hordines  
 Mr. Michael Ruhnke  
 Mr. and Mrs. Frank Rutan  
 Mr. and Mrs. Erik Saarmaa

## STEWARD

\$250-499 *continued*

Mrs. George Sadler  
 Dr. and Mrs. John J. Salesses  
 Mr. and Mrs. Scott Samson  
 Ms. Alicia Samolis  
 Mr. Michael Scanio  
 Mr. Rounseville W. Schaum and  
 Ms. Shirley Gordon  
 Ms. Donna Schlosser  
 Mr. and Mrs. Edward E. Schott  
 Mr. Robert Schrader  
 Mr. Allen C. Schwenk  
 Ms. Kathryn Scott  
 Mr. and Mrs. Theodore E. Stebbins, Jr.  
 Mr. and Mrs. Paul Sehnert  
 Mr. and Mrs. Nick Serrone  
 Mr. James V. Serzan  
 F. Stephen Serzan  
 Ms. Sarah Shapiro  
 Mr. Adam Sharaf  
 Colonel and Mrs. Jeffrey Shaver  
 Mr. and Mrs. Richard B. Sheffield  
 Mr. Edwin S. Sheffield, Jr.  
 Mr. Patrick Shellman  
 Ms. Noelle Shiland  
 Ms. Nirpal Sidhu  
 Mr. Paul J. Sienkowski  
 Mr. and Mrs. Bryan Skulsky  
 Mr. and Mrs. B. Hanson Slaughter  
 Mrs. Crawford K. Small  
 Dr. R. Scott Smith and  
 Ms. Donna Marino  
 Mr. and Mrs. Gary L. Smith  
 Mr. and Mrs. Philip Smith  
 Mr. and Mrs. Thomas A. Smith  
 Mr. Gene Smith  
 Ms. Barbara Smith  
 Ms. Christie Smith  
 Mr. Jonathan Snider  
 Ms. Cynthia Sokobin  
 Ms. Carol Southworth  
 Ms. Mary K. Spengler  
 Miss Jen St. Martin  
 Ms. Ann Marie Stafford  
 Mr. and Mrs. Charles Stamm  
 Mr. and Mrs. Robert T. Steel  
 Mr. Brandon Steinmann and  
 Ms. Darlene Brugnoli  
 Mr. David Stevens  
 Mr. and Mrs. Terrance L. Stowers  
 Ms. Nina A. Straight

## STEWARD

\$250-499 *continued*

Mr. A. Michael Sullivan, Jr.  
 Ms. Jacqueline Sumanis  
 Ms. Vanessa Symmons  
 Mr. and Mrs. Alfred Thibodeau  
 Mr. and Mrs. Joseph Tilghman  
 Mrs. Harle Tinney  
 Captain Michael Tollefson USN (Ret.)  
 Ms. Marianne Towle  
 Mr. and Mrs. Lawrence Trainor  
 Mr. Thomas Trill  
 Ms. Meredith Trudell  
 Ms. Patricia Tuff  
 Ms. Margaret Tutwiler  
 Mr. and Mrs. Randy Vaas  
 Mr. Javier Valenzuela and  
 Ms. Mary Beth Klee  
 Dr. and Mrs. Bruce Vanett  
 Mr. and Mrs. James Vanner  
 Mr. and Mrs. Paul L. Veeder II  
 Mr. Jim E. Vegher and  
 Mr. John W. Grigsby  
 Mrs. Carol Velasco  
 Mr. and Mrs. L. Stephen Vincze  
 Mrs. Patricia S. Walker-Welk  
 Mr. Daniel J. Wallace, Jr.  
 Ms. Lisa Wallen  
 Ms. Martha Walsh  
 Ms. Leslie Ware  
 Mr. George H. Warren  
 Ms. Amy Werner  
 Mr. and Mrs. David Wheeler  
 Mrs. Robert Wheeler  
 Mrs. Vimalin Wheeler and  
 Mr. Thomas Robinson  
 RADM and Mrs. Glenn Whisler  
 Mr. and Mrs. William White  
 Senator and Mrs. Sheldon Whitehouse  
 Ms. Jan Wilson  
 Mr. and Mrs. Dudley A. Williams  
 Mr. Richard Wojtkowiak  
 Mr. and Mrs. David Wood  
 Ms. Jean Wood  
 Ms. Conseula Woodford  
 Mr. and Mrs. Clifford C. Woods  
 Mr. and Mrs. Joseph Woody  
 Mr. and Mrs. Peter Wragg  
 Ms. Jayne Zampelli  
 Ms. Marion Zaszfino  
 Mr. and Mrs. Carl Zuckerberg  
 Anonymous (4)



Teri & Lou Piancone



Phil Pelletier and Peter Madden

**FOUNDATION GIFTS AND GRANTS**

**RICHARD MORRIS HUNT CIRCLE**  
**\$100,000 and above**  
 The Champlin Foundations

**McKIM, MEAD & WHITE CIRCLE**  
**\$50,000-\$99,999**  
 The Loeb Family Foundation  
 J. Edgar Monroe Foundation  
 van Beuren Charitable Foundation

**HORACE TRUMBAUER CIRCLE**  
**\$25,000-49,999**  
 Berwind Fund  
 The William H. Donner Foundation  
 National Trust for Historic Preservation  
 Prince Charitable Trusts

**OGDEN CODMAN CIRCLE**  
**\$10,000-\$24,999**  
 The 1772 Foundation  
 Felicia Fund, Inc.

**CHAIRMAN'S CIRCLE**  
**\$5,000-\$9,999**  
 The Americana Foundation  
 Newport Restoration Foundation  
 Rhode Island Council for the Humanities  
 Rhode Island Historical Preservation & Heritage Commission

**HERITAGE CIRCLE**  
**\$2,500-\$4,999**  
 Hamilton Family Foundation  
 Thomas S. Kenan III Foundation  
 Curt R. & Gerry Pindler Foundation

**BENEFACTOR**  
**\$1,000-\$2,499**  
 The Nautilus Foundation  
 The Rhode Island Foundation

**PATRON**  
**\$500-\$999**  
 Cavanaugh Family Foundation  
 The Edwin S. Soforenko Foundation

**CORPORATE GIFTS**

**RICHARD MORRIS HUNT CIRCLE**  
**\$100,000 and above**  
 National Trust Insurance Services, LLC

**McKIM, MEAD & WHITE CIRCLE**  
**\$50,000-\$99,999**  
 F. A. Bartlett Tree Expert Company

**HORACE TRUMBAUER CIRCLE**  
**\$25,000-49,999**  
 Argo Group/ARIS  
 U.S. Trust, Bank of America Private Wealth Management

**OGDEN CODMAN CIRCLE**  
**\$10,000-\$24,999**  
 Alex and Ani  
 Brooks Brothers  
 Christie's  
 Infiniti  
 Italian Trade Commission  
 Sotheby's, Inc.  
 Warwick Porsche

**CHAIRMAN'S CIRCLE**  
**\$5,000-\$9,999**  
 BankNewport  
 Coca-Cola of Southeastern New England, Inc.  
 Kirby Perkins Construction Co.  
 The Northern Trust Company  
 Stella Artois

**HERITAGE CIRCLE**  
**\$2,500-\$4,999**  
 The Computer Merchant, Ltd.  
 Edwards Wildman Palmer LLC

**CORPORATE GIFTS**

**BENEFACTOR**  
**\$1,000-\$2,499**  
 The Angell Pension Group, Inc.  
 Atria Aquidneck Place  
 Bellevue Wine & Spirits, LLC  
 CBS Radio  
 Child & Family Services  
 Clark's Security, Inc.  
 Corcoran, Peckham, Hayes & Galvin, P.C.  
 The Damon Company  
 Donovan & Sons, Inc.  
 Insurance Marketing Agencies, Inc.  
 Kahn, Litwin, Renza & Co., Ltd.  
 Meridian Printing, Inc.  
 New England Retirement Solutions  
 Newport Hardware  
 Petro Commercial Services  
 Phoenix Media Communications Group  
 Providence Journal Company  
 Russell Morin Fine Catering  
 Shamrock Electric, Inc.  
 SHS Pest Control Corporation  
 UnitedHealthcare  
 Wainwright Investment Counsel  
 WXKS-FM

**CORPORATE GIFTS**

**PATRON**  
**\$500-\$999**  
 Bazmark Pictures III  
 The Bellevue Gardens Shopping Center  
 Ben & Jerry's  
 Brosco & Brosco  
 Covell & Associates, LLC.  
 Crocker Architectural Sheet Metal Co., Inc.  
 Earth Share of New England  
 Hinckley, Allen & Snyder LLP  
 Horizon Beverage  
 Lodi Welding Co., Inc.  
 LongAde LLC  
 Otis Elevator Company  
 Sandra Liotus Lighting Design, LLC  
 Wank Adams Slavin Associates LLP

**STEWARDS**  
**\$250-\$499**  
 Atlantic Beach Club  
 Clambake Club of Newport  
 Coastline Trust Company  
 Hali Beckman Ltd.  
 Law Offices of Richard P. D'Addario  
 Lila Delman Real Estate  
 Michael Hayes Company  
 Swift Morris Interiors  
 T.J. Brown Landscape Contractor, Inc.  
 Trellis Structures  
 Wheaton College



Anne Garnett and Mary Kozik



William &amp; Elizabeth Leatherman, Alice Ross and Lynda Lindh



David Leys and David Lindh

## MATCHING GIFT COMPANIES

Amica Companies Foundation  
 Appleton Associates  
 AT&T Foundation  
 Bank of America Charitable Foundation  
 Berwind Corporation  
 Matching Gifts Program  
 Carnegie Corporation of New York  
 Citizens Charitable Foundation  
 Computer Associates International, Inc.  
 Corning Incorporated Foundation  
 Covidien Employee Matching Gift Program  
 Davidson Holdings, Inc.  
 ExxonMobil Foundation  
 Fair Point Communications  
 GE Foundation  
 IBM Corporation - Matching Grants Program  
 The John A. Hartford Foundation, Inc.  
 John Wiley & Sons, Inc.  
 KeyBank Foundation  
 Macy's Foundation  
 MassMutual Financial Group  
 Merck Partnership for Giving  
 Microsoft Matching Gifts Program  
 Morgan Stanley Smith Barney  
 NSTAR Foundation  
 Pfizer Foundation  
 Matching Gifts Program  
 Semptra Energy Foundation  
 The Vanguard Group Foundation  
 UBS Matching Gifts Program

## MEMORIAL GIFTS

### IN MEMORY OF MISS DAMARIS S. ATWATER

Ms. Greta P. Brown  
 Mr. and Mrs. David Bunnell  
 Mr. William L. Douglas, Jr.  
 Mr. and Mrs. Charles T. Makepeace  
 Ms. Elizabeth P. Millikin  
 Ms. Deborah S. Simonds

### IN MEMORY OF MRS. JOANN F. BLUMSACK

Dr. Joanne Doyle

### IN MEMORY OF MR. RALPH E. CARPENTER

Mrs. Bettie Pardee

### IN MEMORY OF MR. RICHARD CASIMINI

Mr. and Mrs. William J. Souza

### IN MEMORY OF MS. MYRA H. DUVALLY

Ms. Trudy Coxe and Mr. James Gaffney

### IN MEMORY OF MRS. MIRIAM S. KRAKOFF

Mrs. Eleanor Cochran  
 Ms. Beth Everrett  
 Mr. and Mrs. Bruce R. MacPherson  
 Ms. Katherine H. Ostrander  
 Mrs. Judith Paul  
 Mr. and Mrs. J. Kenneth Quirk

### IN MEMORY OF MRS. EILEEN P. O'REILLY

VADM and Mrs. Thomas R. Weschler, USN (Ret.)

### IN MEMORY FOR MRS. PHILLIP B. POOL

Mr. and Mrs. Richard D. Field  
 Ms. Vivia B. Halsey  
 Mr. and Mrs. Peter D. Kinder  
 Ms. Hope G. Simpson

## MEMORIAL GIFTS

### IN MEMORY OF MR. LLOYD M. RIVES

Mr. and Mrs. Rodney Armstrong  
 Bank of America Charitable Foundation  
 Mr. and Mrs. Charles Butts  
 Mr. and Mrs. David Case  
 Ms. Beverly S. Corkhill  
 Mr. Peter B. Gilmore and Ms. Cynthia M. Kingsford  
 Mrs. John P. Glorieux  
 Mr. and Mrs. Edward C. Johnson III  
 Mrs. Jane W. Marshall  
 Mr. and Mrs. Richard P. McCoy  
 Mr. Franklin H. Moore  
 Mr. and Mrs. Robert E. Remis  
 Mrs. George R. Rowland  
 G. Crossan Seybolt, Jr.  
 Drs. Bettie and Oles Smolansky  
 RADM and Mrs. Joseph C. Strasser, USN (Ret.)  
 Mr. and Mrs. Thomas W. Thaler  
 Mrs. Lynne F. Warren  
 Mr. George H. Warren  
 Mrs. Carla Warren  
 Mr.\* and Mrs. John Grenville Winslow

### IN MEMORY OF MRS. EVA STOUPIS

Mr. William L. Douglas, Jr.

### IN MEMORY OF MRS. LUCILLE FEINSTEIN TEITZ

Ms. Rebecca Ackerman  
 Ms. Jessica Becker

## MEMORIAL GIFTS

### IN MEMORY OF MR. JOHN G. WINSLOW

Mrs. Ruth Hale Buchanan  
 The Estate of Elizabeth A. Burton  
 Mr. Dayton T. Carr  
 Ms. Trudy Coxe and Mr. James Gaffney  
 Mr. David B. Ford  
 Hamilton Family Foundation  
 Mr. and Mrs. Peter D. Kinder  
 Mrs. Donald Breck Lamont  
 Mr. and Mrs. Eugene B. Roberts, Jr.  
 Mr. and Mrs. Stanley Deforest Scott

## HONOR GIFTS

### IN HONOR OF MRS. MARION O. CHARLES

Thomas S. Kenan III Foundation

### IN HONOR OF MR. PETER DAMON

Rhode Island Community Food Bank

### IN HONOR OF MRS. KIMBERLY DARDEN

Ms. Marsha Kleinheinz

### IN HONOR OF MR. PAUL F. MILLER

Mr. Nicolas B. Scheetz

### IN HONOR OF MR. AND MRS. MARK E. WATSON III

Mr. and Mrs. Byron L. LeFlore, Jr.



Bill Egan and Jim Carlin



Janet Robinson and Les Ballard



Donald Ross, Nancy Cushing, Pierre & Kathy Irving and John Brooks, Jr.

**DONOR TO COLLECTIONS**

- Lady Romayne Bockstoe
- Countess Alexander E. Eltz
- Ms. Elizabeth Misener
- Mrs. Margaret Berwind Schiffer
- Mr. Christopher Oelrichs Stoecklin
- Mrs. Donald F. Walsh
- Mrs. John Grenville Winslow

**GENERAL IN KIND DONORS**

- Mr. and Mrs. Duncan A. Chapman
- Christie's
- Franklin and Company Interiors
- Mrs. Samuel M. V. Hamilton
- Mr. Jan Hoogendoorn
- Mr. Richard A. Nelson and Mr. James C. Michael, Jr.
- Newport Tent Company, Inc.
- Ms. Theresa M. Peckham
- Restoration by Costikyan, Ltd.
- Russell Morin Fine Catering
- Walker Interiors

**IN KIND CORPORATE SUPPORT**

- Food & Wine Magazine
- Clarke Luxury Showrooms
- Coca-Cola of Southeastern New England, Inc.
- Dave's Marketplace
- Hotel Viking
- Newport Hyatt
- Walpole Woodworkers, Inc.
- Yankee Publishing, Inc.

**CHRISTMAS TREE & CHRISTMAS GARLAND DONORS**

- Mr. Michael Gorman
- Mr. and Mr. Steve McQuaid
- Mr. and Mrs. Francis Mendonca
- Mr. Tony Silvia

**EASTER EGG HUNT IN KIND SUPPORT**

- Lindt Chocolates

**2011 WINE AND FOOD FESTIVAL AUCTION DONORS**

- Adornment Fine Jewelry
- Alain & John Junguenet
- Alaska Seafood Marketing Institute
- Alexian Paté & Specialty Meats
- Audio Concepts
- Lidia Bastianich
- Bergstrom Wines
- Cabot Creamery Vermont
- Carole Shiber Designs
- Castello Banfi
- Caymus Vineyards
- Clarke Corporation
- The Cooper Spirits Company
- Dave's Marketplace
- David Burke Restaurants
- DeGrosso
- Lurgio Imports LLC
- Divine Kitchens
- Domanie Select Wine Estates
- Dos Familias Imports
- Dubarry of Ireland
- Earthquake
- Food & Wine Magazine
- Francis Malbone House
- Frankie's Fruit and Chocolate
- Garden Stone Art
- Mr. and Mrs. Robert Grasing
- Green Mountain Coffee
- Greenvale Vineyards
- Greg's Antiques & Gardens
- Hall Vineyards
- Herlochers
- Highland Park Single Malt Scotch Whiskey
- The Hotel Viking
- Indo-Chic
- Isabella Stuart Gardner Museum
- Jason & Co.
- JC Import Co.
- Joel Gott
- JUSTIN Vineyards
- Kobrand Corporation
- La Molisana Sausage
- LaCigale
- Ladera Vineyards
- Lark Rorderiques
- Lisa's Garden Designs
- MacIntosh
- Magner's Irish Cider

- Maria Pucci Couture
- Mariposa
- Mathilde Duffy
- Merry Edwards Winery
- Meteor Vineyard
- Mija Jewelry
- Mohegan Sun
- Ocean House
- Old Yankee Cutting Boards
- Pacific Wine Group
- Philip Sawyer Designs
- Kimberly and Alessio Pucci
- Quivira Vineyards
- Reign Gallery and Thomas Arvid
- J.M. Rhum
- Riviera Palm Springs
- Rutherford Wine Company
- Sea Streak & Martha's Vineyard Transit Authority
- Sheridan Shea
- Shula's 347 Grill
- Smathers and Branson
- The Soiree Company
- Stella Artois
- Sunny Window
- Tallulah on Thames
- Taskase
- Terra Valentine
- The Newport Experience
- Treasures of the Vine
- Trellisman
- Trifecta Wines
- Trincherio Family Estates
- Trinity Repertory Company
- Triumvir Wines
- Twelve Beverage, LLC
- Vanderbilt Gallery
- Victorian Ladies Inn
- Wine Worldwide, Inc.
- Wooden Expressions
- Wusthof Trident of America
- XV Beacon Hotel & Boston Food Tours

\*Deceased



Andrea Carneiro and Norm Abrams



Anne Damon and Bernard &amp; Sarah Gewirz



*We wish to recognize our members and friends who have informed the Preservation Society of a bequest in their estate plans by warmly welcoming them into the Conservators Circle.*

A bequest provision represents exceptional support of historic preservation as part of a person's social legacy. The Conservators Circle honors these individuals for their far-sighted commitments.

Mr. and Mrs. Armin B. Allen  
 Mr. Miles O. and Ms. Lisa Bidwell  
 Mrs. Ruth Hale Buchanan  
 Mr. Dayton T. Carr  
 Mr. Edward Lee Cave  
 Ms. Beth Cotner  
 Mrs. Alexander C. Cushing  
 Mr. and Mrs. Peter S. Damon  
 Mr. M. David Dial, Jr. and  
 Ms. Linda M. Brotkin  
 Mrs. Linda A. Eppich  
 Mrs. Edwin G. Fischer  
 Mr. Ronald Lee Fleming  
 Mrs. Jae French  
 Mr. and Mrs. Robert M. Grace  
 Mr. Jay C. Grutman  
 Mr. Joseph W. Hammer  
 Ms. Joya Granbery Hoyt  
 Mr. and Mrs. Pierre duPont Irving  
 Mr. Nicholas L. S. Kirkbride

Mr. Mark A. Orlando  
 Mr. Walter W. Patten, Jr.  
 Mr. and Mrs. Peter A. Robichaud  
 Mr. James A. Roehm  
 Mr. and Mrs. Donald O. Ross  
 Ms. Karen R. Roosen  
 Dr. Charles A. Ryerson  
 Mr. Harold W. Sands  
 Ms. Sandra E. Smith  
 Mr. Dennis E. Stark  
 Mrs. A. Theodore Stautberg, Jr.  
 Mr. David Stevens  
 Mr. and Mrs. James P. Stirling  
 Mr. A. Michael Sullivan  
 Mr. Richard A. Tonne  
 Mr. Peter M. Walter  
 Mr. William M. Wood Prince  
 Anonymous 2001  
 Anonymous 2011 (2)

#### **Bequests received in Fiscal Year 2011**

Estate of Elizabeth A. Burton  
 Estate of Capt. Brown Taylor  
 Estate of Lloyd M. Rives  
 Trust of Harold B. Werner

#### **Past bequests that continue to benefit The Preservation Society of Newport County**

Estate of Alice Brayton  
 Estate of Elizabeth A. Burton  
 Estate of Florence L. Fischer  
 Estate of Katherine B. Linz  
 Charitable Trust of Eleanor Wood Prince  
 Estate of Alletta Morris McBean  
 Estate of George H. Parker  
 Estate of Benjamin C. Reed  
 Estate of Mrs. Anthony B. Rives  
 Estate of John Rovensky  
 Estate of Countess Anthony Szápáry  
 Trust of Harold B. Werne



# Board of Trustees

The following individuals were elected to the Preservation Society's Board of Trustees for the 2012-2013 fiscal year at the Society's annual meeting on June 14, 2012:

## OFFICERS

### *Chairman*

Donald O. Ross

### *Vice Chair*

Angela Brown Fischer

### *Vice Presidents*

Carol C. Ballard

David P. Leys

Angela L. Moore

### *Treasurer*

Monty Burnham

### *Assistant Treasurer*

Peter S. Damon

### *Secretary*

Arthur W. Murphy, Esq.

## TRUSTEES

Mortimer Berkowitz III

Duncan A. Chapman

Nancy W. Cushing

Kim Darden

David B. Ford

Sarah M. Gewirz

Ala Isham

Eaddo Hayes Kiernan

Elizabeth W. Leatherman

David E. P. Lindh

William F. Lucey

Ronald K. Machtley

John D. Muggeridge

Andrew K. Reilly

Eugene B. Roberts, Jr.

Janet L. Robinson

Alice D. Ross

Archbold D. van Beuren

Mary Van Pelt

Mark E. Watson III

William F. Wilson

William N. Wood Prince

## OVERSEERS

Marion O. Charles

Hope Drury Goddard

Jerome R. Kirby

Richard N. Sayer, Esq.

John J. Slocum, Jr.

George H. Warren



# International Council

The International Council is a group of nationally and internationally recognized leaders in the fields of the arts, culture and historic preservation. Their role is to provide the Preservation Society with insight and guidance on global issues that affect cultural heritage institutions, and to help identify the best practices in preservation, conservation, education, development and museum management.



Armin B. Allen, Co-Chair  
 Earl A. Powell III, Co-Chair  
 John Winthrop Aldrich  
 Princesse Minnie de Beauvau-Craon  
 Theresa Elmore Behrendt  
 James D. Berwind  
 Bonnie Burnham  
 Dr. Johan Cederlund  
 Maureen K. Chilton  
 Alec Cobbe  
 Claudio Del Vecchio  
 Debra Del Vecchio  
 Nancy Dubuc  
 Peter Eltz  
 Henrietta H. Fore  
 Morrison H. Heckscher  
 Robin Herbert, CBE  
 Count Denis de Kergorlay  
 Baron Roland de l'Espée  
 Brooks Lobkowitz  
 Robert B. MacKay  
 Pauline C. Metcalf  
 Richard Moe  
 Mary S. Phipps  
 Louis G. Piancone  
 Anne L. Poulet  
 Dame Fiona Reynolds, DBE  
 Sir Hugh Roberts, GCVO  
 Charles M. Royce  
 Deborah G. Royce  
 Tracie Rozhon  
 El Marqués de Santa Cruz  
 Lady Henrietta Spencer-Churchill,  
 BIID, FIDA  
 Vladimir I. Tolstoy  
 Diane B. Wilsey  
 Richard Guy Wilson





2011-2012 Annual Report  
 Editor: Andrea Carneiro  
 Design: Roskelly Inc.  
 Printing: Meridian Printing

© 2012 The Preservation Society of Newport County

424 Bellevue Avenue

Newport, RI 02840

(401) 847-1000

www.NewportMansions.org

## OUR MISSION

Great Houses connect people to a nation's heritage and open windows to another age. The Preservation Society of Newport County is a non-profit organization whose mission is to protect, preserve, and present an exceptional collection of house museums and landscapes in one of the most historically intact cities in America. We hold in public trust the Newport Mansions which are an integral part of the living fabric of Newport, Rhode Island. These sites exemplify three centuries of the finest achievements in American architecture, decorative arts, and landscape design spanning the Colonial era to the Gilded Age. Through our historic properties, educational programs, and related activities we engage the public in the story of America's vibrant cultural heritage. We seek to inspire and promote an appreciation of the value of preservation to enrich the lives of people everywhere.

## PRESERVATION SOCIETY PROPERTIES

Arnold Burying Ground (1675)

Hunter House (circa 1748)

Kingscote (1839-1841)

Chateau-sur-Mer (1851-1852)

Green Animals Topiary Garden (circa 1860)

Chepstow (1860-1861)

Isaac Bell House (1881-1883)

424 Bellevue Avenue (1887-1888)

Marble House (1888-1892)

The Breakers (1893-1895)

The Breakers Stable & Carriage House (1895)

The Elms (1899-1901)

Rosecliff (1899-1902)

Rovensky Park (1959)

Front Cover: The Breakers Great Hall

Photo by corbettphotography.net

Inside Front Cover:

Rosecliff courtyard, Newport Flower Show

Photo by corbettphotography.net

# Full-Time Employees

## OFFICE OF THE CEO & EXECUTIVE DIRECTOR

Trudy Coxe, *CEO & Executive Director*

Terry L. Dickinson, *Chief of Staff*

Colleen Breitenstein

## EDUCATIONAL SALES

Cynthia J. O'Malley, *Director*

Kathryn M. Botelho

Maria Goldberg

Maryann Hertig

Susan L. Kehoe

Patricia A. Morris

Laura Murphy

Karen G. Wheeler

## FINANCE

James M. Burruss, *Director*

Jennifer E. Clinton

Hugh Collard

Janet F. Doda

Jill Munch

## GARDENS AND GROUNDS

Jeffrey T. Curtis, *Director*

Anthony R. Aguiar

Rebecca L. Bonnenfant

James Donahue

Thomas D. Downes

Luis F. Francisco

James P. Levitre

Michael Logan

Robert Marville, Jr.

Eugene Platt

Charissa Rogers

Benjamin J. Shaw

## INSTITUTIONAL ADVANCEMENT

Mary B. Kozik, *Chief of IA*

Johanna B. Quinn

## MUSEUM AFFAIRS

John R. Tschirch, *Director*

John Bartosh

Charles J. Burns, Jr.

Alice Dickinson

Caitlin M. Emery

Paul F. Miller

Charles J. Moore

Miranda L. Peters

Patricia M. Peterson

Maria J. Petisca

Kaitlyn E. Ryan

Jessica L. Urick

## MUSEUM EXPERIENCE

John G. Rodman, *Director*

Brandon C. Aglio

David E. Boenning

Andrea Carneiro

Ivan S. Colon

Kimberly F. Dolbashian

Daniel P. Fryer

Melanie Garcia

Anita C. Harrell

Debbie Kammerer

Lucy A. Kinsley

Kelly A. McDermott

Judith Moniz

Alberta T. Picozzi

Robert Regalbutto

Barbara A. Shea

Carol A. Velasco

Donato T. Ziurella

## PROPERTIES

Curtis H. Genga, *Director*

Virgilio G. Aguiar

James A. Aull

Robert A. Beebe, Jr.

Jeffrey D. Boyark

Kenneth Breitenstein

Margaret Cavaliere

James H. Cottrell

Bryan T. Coyne

Maryanne N. Craft

Alfred Devellis, Jr.

Brian E. Faria

Nicole Hatzberger

Gilbert W. Lawrence

Robert C. Marville

Harold F. Mathews

Pauline McGrady-Keneshea

William D. Miranda, Jr.

William R. Murphy

David J. Oakley

Patricia Pasvolsky

Theresa M. Peckham

Christine G. Pickens

Thomas Pickens

Robert A. Raffa

Patricia Stetson

Betsy A. Vivieros

Robert G. Watterson

Philip D. Woolhouse

Theresa Wyatt

## SPECIAL EVENTS

Philip F. Pelletier, *Director*

Erin Clark

Beverly Ware

Thank you to our donors for their charitable contributions to the Preservation Society's mission.

**National Trust Insurance Services, LLC**  
 an affiliated entity of  
 NATIONAL TRUST FOR HISTORIC PRESERVATION



The Newport Daily News



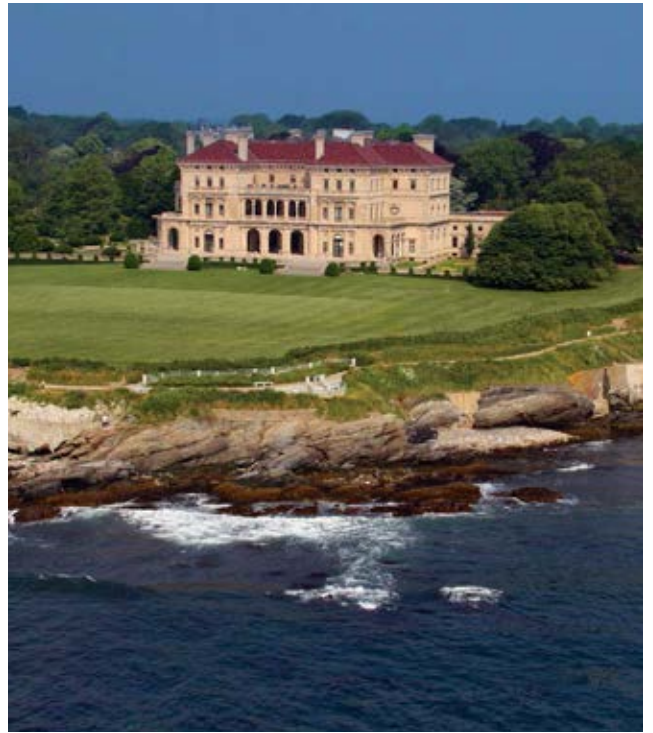
# THE PRESERVATION SOCIETY OF NEWPORT COUNTY

## Thank you for supporting the Annual Fund

Your contribution to the Annual Fund is an investment in our mission to protect, preserve and present an exceptional collection of house museums and landscapes in one of the most historically intact cities in America.

The Preservation Society is a living museum with a collection of 14 historic properties—seven of them National Historic Landmarks—and an 88 acre arboretum. Each year we welcome more than half a million visitors from around the world, making us among the four most visited cultural institutions in New England. A dedicated team of scholars, craftspeople, educators, and other museum professionals make this possible.

We rely on you as our partners to provide the financial support that is the lifeblood of our world-class museum. We invite you to please continue supporting the Annual Fund.



For more information and to support the Annual Fund, please call 401-847-1000 ext. 142 or visit [NewportMansions.org](http://NewportMansions.org)



THE PRESERVATION SOCIETY OF NEWPORT COUNTY  
424 BELLEVUE AVENUE  
NEWPORT, RI 02840

NON-PROFIT ORG  
U.S. POSTAGE  
P A I D  
THE PRESERVATION  
SOCIETY OF  
NEWPORT COUNTY

THE PRESERVATION SOCIETY OF NEWPORT COUNTY  
401-847-1000 • Fax 401-847-1361 • [www.NewportMansions.org](http://www.NewportMansions.org)

Accredited by the American Association of Museums



Join us for  
*Newport: The Glamour of Ornament*

Loan exhibition celebrating  
THE PRESERVATION SOCIETY OF NEWPORT COUNTY  
at the 59th Annual  
Winter Antiques Show

January 25 - February 3, 2013  
Park Avenue Armory, New York City



Featuring more than 50 of the most significant objects in the Preservation Society's collections. Loan exhibition sponsored by Chubb Personal Insurance



WINTER ANTIQUES SHOW  
A BENEFIT FOR EAST SIDE HOUSE SETTLEMENT

