



Annual Report



A portrait of John G. Winslow, an elderly man with white hair, wearing a dark suit, white shirt, and dark tie. He is seated at a desk, looking slightly to the right of the camera. His right hand is resting on a pen over some papers on the desk.

In Memoriam

JOHN G. WINSLOW

1917-2011

As the Annual Report was going to press, the Preservation Society family was saddened to learn of the death of Chairman Emeritus John Grenville Winslow. Mr. Winslow, an acknowledged authority on the history of Newport, served as President and Chairman of the Board of Trustees from 1977 to 1989, guiding the Preservation Society through a period of significant expansion.

The next issue of the Newport Gazette will feature a look at some of Mr. Winslow's greatest contributions to the preservation of Newport's rich artistic and architectural heritage.



The Chairman's Report

By Donald O. Ross

Remarks delivered at the Preservation Society's Annual Meeting, June 16, 2011

Good evening and welcome to the 2011 Annual Meeting. I'm Donald Ross, Chairman of the Board of Trustees of The Preservation Society of Newport County. This is our 65th Annual Meeting—and my first as your Chairman.

I have served on the Board since 1989, with one year off in the '90s, and chaired the Finance Committee for the five years preceding my term as Chairman. During my term on the Board, I have served on a variety of committees and seen many ups and downs in our organization. We've come through a period when our deferred maintenance was \$12 million, the economy was falling or crashing, and the outlook was for one very expensive roof re-do after the next. We worried about attendance—and then re-budgeting in mid-year—far too many times.

This evening I bring you some good news.

I am very happy to report that the fiscal year which ended March 31, while not devoid of worries, turned into a very good year in many respects. And it was a continuation of the good period we had the prior fiscal year. I want to congratulate everyone on a terrific job well done—actually a superb job well done.

Over the next few minutes, I want to put the year's achievements, events and milestones in perspective, highlighting a few key items. Some of these things were years in the making, but taken together, tell us that we are staying very true to our mission and are well positioned for the next several years.

While we all know that our Board's responsibility is to preserve and protect these historic houses and their grounds, the early mission was clearly broader than that, and reflected a time before we actually had the portfolio of these homes. One section of our current mission statement is particularly important. "Through our historic properties, educational programs, and related activities, we engage the public in the story of America's vibrant and cultural heritage." With the completion or near-completion of a number of structural preservation efforts, effective managing of the financial plans, and good attendance (which funds 40% or so of our budget), we are now in a position to have greater focus on our collections, our landscapes, our research and our education efforts. And, importantly, advocacy as it relates to preservation, landscapes and various issues, which can involve public policy initiatives, that fit



Photo by cobblephotography.net

within our mission. You will hear tonight about some of our strategic initiatives that we plan to undertake over the next several years, but first I would like to tell you about and show you some of the important events which shaped our efforts over the last year.

One of our most significant achievements was the Gothic Art in the Gilded Age exhibition at Marble House, which was enjoyed by over 120,000 people. This collection, which had been acquired by Alva Vanderbilt, made up the largest such exhibition ever presented by the Preservation Society, and a collaboration years in the making with The Ringling Museum in Sarasota, Florida. The exhibition would not have been possible without the support of The Kress Foundation, The Alletta Morris McBean Charitable Trust, Gene and Lynn Roberts, and David Ford.

The extraordinary teamwork it took to mount this exhibit was what we have come to expect day in and day out here at the Preservation Society – involving every department, from curatorial to conservation, from properties to special events to museum experience. I know many staff members were involved, led by Trudy Coxe, our CEO and Executive Director, but I do want to specifically thank Paul Miller, our head curator, and Jeff Moore, our chief conservator, for their efforts.

In addition to being a reason for visitors to come back to Marble House, this exhibition also elevated our exposure within the overall museum community for the quality of the research and collaboration involved. It's just too bad that the collection had to return to Florida.

I should mention that from time to time items from our own collections go on the road. While not within the last 12 months, not too long ago we did loan several pieces, including the Gilbert

Stuart painting from Hunter House, to the Metropolitan Museum of Art in New York for their John Townsend exhibit. Here in Newport last year we collaborated with the Newport Art Museum by lending them certain items from our collections for the Japan Craze exhibit, and we will again this year work together on another special exhibit.

The real milestone on the preservation front, however, was the completion of the Chateau-sur-Mer roof and exterior restoration project. After five years and \$2.1 million, Chateau stands proud. I want to thank the major supporters of this effort: The 1772 Foundation, The Brown Foundation, Inc., Felicia Fund, Inc., Ford Family Foundation, Hope Foundation, Save America's Treasures, Rhode Island Historical Preservation and Heritage Commission, Sachem Foundation, The Champlin Foundation, and the van Beuren Charitable Foundation. And we commend Crocker Architectural Company for taking on the job and completing a complicated restoration brilliantly.

Even as the exterior work was going on, our conservators were restoring the collapsed ceiling above the main staircase, which has now been put back in place; as have the torchers at the foot of the grand staircase, which has put a dazzling exclamation point on the Chateau-sur-Mer project. The icing on the cake: the Victorian Society in America has awarded us its prestigious Preservation Award for the excellence of the restoration!

We also took some big steps forward in interpreting our permanent collection. We followed the original audio tour at The Breakers with a Family Tour aimed at engaging children in visiting the house. Here is what one visitor wrote to us about taking the tour with her 4 and 6 year old daughters:

"We were amazed at how much the girls enjoyed their audio family tour. Our oldest daughter, Paige, said, 'Mom! The house was talking to me!' It brought the experience to life for them, and made them want to learn about history. It was such a pleasure to see the girls enjoying it."

When guests tell us things like that, then we know that we are reaching people in the right way, giving them an educational experience, not just a tourist experience.

We have also expanded our audio tours to include Rosecliff, completing the full cycle of audio experiences envisioned more than a decade ago when we began investing in this form of educational interpretation. The audio tour includes voices ranging from Sam White, the great grandson of the architect



Chairman Donald O. Ross accepts the Victorian Society in America's Preservation Award for the restoration of Chateau-sur-Mer from John Simonelli and Tina Strauss of the VSA Board. Photo by Andrea Carneiro

Stanford White, to David Leys, one of our long time trustees, reminiscing about the day as a young boy when he saw firsthand the damage caused to the ceilings and floors of this beautiful house by a burst water pipe.

Speaking of Rosecliff, on your way out tonight please take a look at the marble steps along the front of the house. They were restored earlier this year, just another example of the day-to-day work that goes on to maintain our houses in the best possible condition, to ensure that they can be sustained into the future.

The work on The Breakers gates reached another milestone with the completion of the pedestrian gates on the north side, funded by a generous gift from The Loeb Family Foundation. The remarkable work by Lodi Welding from Hackettstown, NJ on the Ochre Point Avenue entrance gates brought us a Rhody Award from the Rhode Island Historical Preservation and Heritage Commission and Preserve RI. Work on the main north gates and the Cliff Walk gates continues –funded by The Alletta Morris McBean Charitable Trust.

We also completed The Bellevue Avenue History Trail in co-operation with former trustee David Bazarsky, Aram Garabedian, the Newport Restoration Foundation and Salve Regina University. The trail is a series of interpretive panels which run from Memorial Boulevard all the way to Rough Point, depicting many lost buildings from Bellevue Avenue's past and explaining the survival of many of those that remain. Former trustee Ron Fleming conceived of and funded this series of 11 markers that are being enjoyed daily by visitors and Newporters alike. John Tschirch, our head of Museum Affairs, played an important role in the scripting of these markers. And the City of Newport just gave this group of collaborators an award for this effort.

We are fond of reporting on the completion of projects at annual meetings, but often a project begun is just as important as one completed. That is the case with the conservation of the lacquer panels in the breakfast room of The Elms. After an extensive and detailed planning phase funded in part by the Getty Foundation, the actual restoration work is underway, with grants from the Institute of Museum and Library Services, the E. Rhodes and Leona B. Carpenter Foundation, the Berwind Fund, the Berwind Corporation, the Felicia Fund, and John Brooks. We expect that the lacquer panel project may take another couple of years before the breakfast room is put back in "working" order.

Another project “beginning” that we are celebrating is the creation of an Historic Structures Report for Hunter House, perhaps the least understood building in our collection. Thanks to a generous grant from the van Beuren Charitable Foundation, we will learn things about the construction of Hunter House that we never knew before.

There was another milestone that may not have as much pizzazz as researching Hunter House or conserving The Elms panels, but it is nevertheless as important. And that is a major investment in technology, to digitize our membership and general admissions systems.

From purchasing a membership or tickets online, to booking a date for an event at Rosecliff, making plans to attend the wine and food festival, reserving a behind-the-scenes tour at The Elms, or ordering snacks at The Elms Carriage House and the Chinese Tea house—it is all now on one integrated computer system. And we have trustee John Muggerridge and the Fidelity Foundation, and, again, the Institute of Museum and Library Services to thank for bringing us further into the 21st century. Our strategic plan continues to envision technology spending for the future to enhance our operations and the visitors’ experience.

Part of our mission is “to inspire people to an appreciation of the importance of historic preservation.” Clearly, in order to do that, first we have to get them here. And they are coming, despite the turbulence of the national economy. We experienced the 4th consecutive year of admissions growth, and finally saw a return of visitation to the levels we experienced before the events of 9/11.

More than 800,000 times last year, a visitor stepped into one of our houses. They came from all 50 states and more than 20 countries. Admission revenue was more than \$400,000 ahead of budget and is approaching \$8 million annually. Total visitation growth for fiscal year 2011 was 2.7% above the previous year. Membership revenue also grew and we now have over 23,000 members.

One way that you know things are going well is when other people want to be associated with your efforts. Discussed amongst Board members for several years as a concept, last year we decided to move forward and establish an International Council. And we actually did attract 35 of the best and brightest leaders from around the world in the fields of the arts, historic preservation, and landscapes to serve on our newly formed Council. We’ve gathered this group of individuals from around the globe to give them a forum to discuss issues that they see in their professional and volunteer lives relating to the subjects that are near and dear to our hearts at the PS. They will also be very helpful for our research and education efforts, as well as providing insight as to global issues that affect cultural heritage organizations like ours, and they can serve as international ambassadors for the Preservation Society.

This is a very impressive group of people. Armin Allen, a past Chair of the Preservation Society, serves as co-chair of the

Council, along with Rusty Powell, known to many Newporters, who is the Director of the National Gallery in Washington.

Members include Richard Guy Wilson, who chairs the University of Virginia Architectural History Department, and who delivered a terrific lecture here recently on Messrs. McKim, Mead & White, and Dick Moe, who recently stepped down as the Chairman of the National Trust for Historic Preservation. We also have Dame Fiona Reynolds, who is Director General of the National Trust in Great Britain, and Sir Hugh Roberts, who only just retired from his role as the Director of the Royal Collection and Surveyor of the Queen’s Works of Art.

Also Bonnie Burnham, President of the World Monuments Fund; Count Denis de Kergorlay, who is Executive President of Europa Nostra and President of the French Heritage Society; and El Marques de Santa Cruz, who is the former Chairman of Patrimonio Nacional, the organization responsible for the Royal Palaces and Crown Art Collections in Spain.

And most recently, an individual with a Newport ancestry: Lady Henrietta Spencer-Churchill of the Blenheim family, who is a great-granddaughter of Consuelo Vanderbilt, who, of course, lived at Marble House during the summers.

That’s just to name a few. I want to thank trustee Susan Stautberg, an experienced practitioner of creating advisory councils, for her help in spearheading this important effort of the Preservation Society.

The creation of the International Council provides us with additional inspiration for our future objectives. We have spent a lot of the past year in setting strategic priorities that will bring us into the upper echelon of museum institutions when it comes to endowed support for our educational, conservation and curatorial capabilities. Trudy will discuss some of these in her remarks. One thing I believe we have demonstrated this year is that our milestones – the many that I cited – help drive us forward and your support makes those milestones a reality.

In closing, I would like to also commend our staff, led by Trudy Coxé, for their extraordinary dedication and work effort. Our Finance Director, Jim Burress, was named by the Providence Business News as the top non-profit Chief Financial Officer in Rhode Island this year, an award that was prompted by a nomination from the senior staff. And not to be outdone, some of you may be aware that Trudy was awarded the Business Leader of the Year Career Award for Women by the Providence Business News. She was unaware that she had been nominated... and she was nominated by her staff.

Thus, I think you would agree that we really have had a year with a broad range of successes. But we are working hard to consider the many challenges we face over the next several years.

In closing, I wish to thank you all very much for what you do for the Preservation Society. It is you, our supporters which make these tall orders possible.

CEO & Executive Director's Report

By *Trudy Cox*

Remarks delivered at the Preservation Society's Annual Meeting, June 16, 2011



Photo by corbettphotography.net

Let's congratulate Don for such a successful first year as chairman of the board. We've had a lot of great accomplishments under Don's leadership and all of us here are grateful for the energy you put into this time-consuming, non-paying labor of love. Don and the entire Board of Trustees are so important to this organization and I thank them all for their support.

As you've seen from the publicity lately, the Preservation Society – specifically The Breakers - has been selected by the National Trust for Historic Preservation to compete in a contest called "This Place Matters." We are up against 99 other sites around the country - the only RI site selected - only 8 in New England - and the site that receives the most votes from the public will receive \$25,000 and, of course, national prestige. [See update page 9].

Newport has always been a place that matters.

It mattered to the 28,000 people who in 1948 came to The Breakers during the first four months that it was open to the public. No one on the Board expected such acclaim or popularity.

Why are we doing all of this? Because Newport matters. It mattered to Katherine Warren and our founders, who organized to prevent Newport's heritage from being lost.

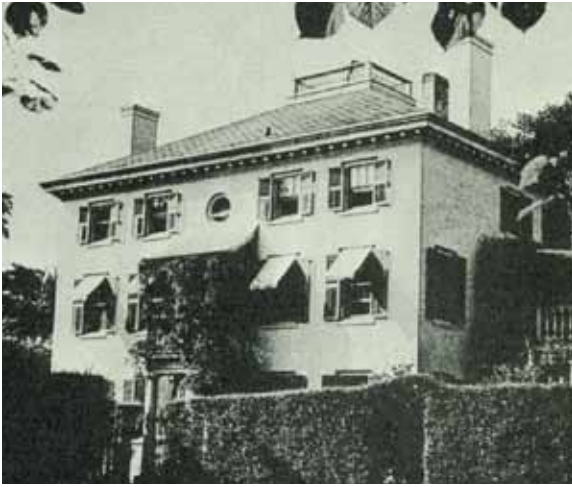
Trudy Cox

It mattered to the group of volunteers who created the Preservation Society's first Mission Statement. This is what they created:

"To save one of the greatest historical possessions of this country, the old houses of Newport. No American city or town has more or finer early houses than has the city of Newport. Their preservation is a matter of patriotic concern to the nation."

Clearly, this place mattered to the Preservation Society's founders.

It mattered to Katherine Warren, who encouraged members of the Preservation Society to find a way to save the White Horse Tavern. She said,



118 Mill Street, former PS headquarters, 1947

“To permit this old landmark to be replaced by a gas station would be an unforgivable blot on the Preservation Society; it would also lower the standing of the city through the United States if it were known that for the lack of a paltry \$15,000 Newport remained asleep at the switch.”

For Katherine Warren, Newport and its historic legacy clearly mattered.

And you can sense the strength of conviction about how much Newport and our houses matter when you listen to Bobby Monroe talk about Rosecliff, his family’s summer retreat. His comments are included in the new Rosecliff audio tour which debuted in early April.

Today, to every volunteer who commits time to serving on the Board of Trustees, the International Council, or one of our many committees, to those who help plan and orchestrate the Newport Flower Show or the Wine & Food Festival or any of our dinner dances; to those who volunteer their time on hot summer days to weed our gardens; to everyone – from the past and in the present – their dedication and commitment to our mission signals just how much this place matters.

Over the past few years our Board of Trustees and senior staff have spent a considerable amount of time envisioning what the Preservation Society should look like 5, 10, even 20 years from now—making sure that we do our part to make this place matter. There are now strategic goals in place, business plans to refer to, and subcommittees hard at work.

Our goals include:

- Creating a conservation lab that incorporates 21st century technology;
- Growing our collections fund to a million dollars; and
- Building a permanent museum ticket and refreshment center at The Breakers, because a tent (with no air conditioning, dusty dirt floors and no protection from rain or lightning) is not a proper venue to welcome the 350,000 guests who annually visit The Breakers alone. We need to treat our visitors as if they matter.

Our strategic plan includes many initiatives, but I want to mention two that will have a tremendous impact on redefining the Preservation Society: building preservation advocacy into our daily activities; and creating a Scholars Center.

As Rhode Island’s most significant cultural institution, we receive many requests to take a lead or be involved on a variety of topics that range from historic tax credits to gambling. In our vision of the future, we will have a full-time professional on staff to help turn the Preservation Society into a hub of action – a place that’s brimming with new ideas – where key issues that affect the character of Newport County can be addressed. These include issues like how to save disappearing viewsheds and make the entranceways onto our Island more attractive; and how to work with the city to ensure that before cobra lights are installed on Broadway or brick sidewalks are torn up, the public’s view has been considered.

Truth be told, civic engagement is not new at the Preservation Society. If you look back at our minutes from the 1940s and ‘50s, we have been preservation advocates right from the beginning, not just preserving buildings but preserving the historic character and fabric of Newport County:

- The Hunter House in 1946;
- The Pitts Head Tavern (built in 1725) in 1947. This building was first located on Washington Square, was moved to Charles Street and served as the main headquarters of the Preservation Society until the late 1950s and was later moved to the Point section;
- In 1954, thanks to the generosity of the van Beuren family, we acquired the White Horse Tavern and two buildings next door. The founders wanted the Tavern because it served as the RI State House before the Revolution;
- We bought the Augustus Lucas House on Division Street at a public auction (for \$1,825) and sold it within a week for the same price. The only reason we bought it was to save it.
- Over the years, we acquired the Rogers House, the Auton House, Mill Street, Malbone, and Hopedene.



Hunter House, circa 1955

Why did we buy and sell these houses? Because they mattered. But, it wasn't just buildings we were saving, it was the city's character.

In 1948, when the Sun Oil Company was going to build a gas station across the street from the Old Colony House, we tried to get them to design a colonial style building in keeping with the neighborhood. Mrs. Warren reported at the annual meeting that it was "unfortunate that the Sun Oil Company did not see fit to adopt the plan."

In 1957, the trustees opposed the building of an oil refinery in Jamestown. They said it would "change the overall character of the region, tourist trade would fall off and income from this source would diminish and in time disappear." Can you imagine an oil refinery in Jamestown?

In 1959, we tried to persuade St. Paul's Church not to tear down the Parish Hall and put up a "functional" building. It was written that "with the loss of the parish house would go the whole vitally important 'street scape.' And one more bit of irreplaceable Newport will be lost." We lost that battle, but you can see we were in the mix on all sorts of activities.

So, with all this history under our belts it's logical to build our voice and presence on behalf of this community and its historic assets. Creating a focus on preservation policy – working day in and day out – will allow the Preservation Society to be proactive rather than reactive on important community issues; grow a constituency of preservationists throughout the region; be present and heard at important local, state and federal meetings; and be a persuasive, articulate and educated voice, proclaiming that this place matters.



The Elms Carriage House



White Horse Tavern, 1954

The second vision for our future is to restore and turn The Elms Carriage House into a scholarly research center which will attract the best and brightest graduate students from around the world to help expand the intellectual credibility and horsepower of Rhode Island and its history. We've gained so much from students in the past:

- A Winterthur student discovered that the walls of The Morning Room at The Breakers were platinum leaf;
- A London Guildhall student treated the porch dolphins at the Isaac Bell House;
- A London Metropolitan University student gilded the weathervane at Chateau-sur-Mer;
- A group of Roger Williams University students helped restore the ceiling of the Gothic Room at Marble House.

Scholarly research is competitive and the best way we know to attract the best and the brightest is to provide an attractive and well-appointed place for students to live and work. Can you imagine a better spot to live and do research than Newport?

The second and third floors of the Carriage House need restoration but a little imagination tells you how great an inducement these rooms could be as a Scholars Center. Architects have begun to develop a restoration and reuse plan; we met with city officials and neighbors; have begun the permitting process, and, when successful, we will have the best Scholars Center in America.

Why are we doing all of this? Because Newport matters. It mattered to Katherine Warren and our founders, who organized to prevent Newport's heritage from being lost. It mattered to the concerned citizens who saved The Elms from being torn down. It mattered to J. Edgar Monroe and Harold Vanderbilt and Alletta Morris McBean, and so many others in the decades that followed who shared the belief that the old houses of Newport are among the greatest historical possessions of this country. A matter of patriotic concern to this nation!

And clearly, it continues to matter to all of you. And for that, we are very grateful.



We Won! The Breakers Won!

On August 22, 2011, Preservation Society Chairman Donald O. Ross and Executive Director Trudy Coxe accepted a check for \$25,000 from the National Trust for Historic Preservation and Fireman's Fund Insurance Company for winning the Trust's 2011 "This Place Matters" Community Challenge. The Preservation Society received the most online votes from the public in the month-long competition among 100 historic sites nationwide.

"We are incredibly grateful to the thousands of people who took the time to register votes on our behalf during the contest," said Coxe. "While we are thrilled to receive the prize money, and will put it to good use, we are most gratified by the demonstration of affection and respect that so many people have for our mission to preserve The Breakers and the other Newport Mansions."

Coxe also thanked the National Trust for Historic Preservation and Fireman's Fund Insurance Company for sponsoring the challenge. "This innovative competition helped to shine the spotlight on historic preservation projects all over the country, and energized preservation efforts in all of those communities."

Thank You

From left: Margaret O'Neal of the National Trust; PS Trustees Monty Burnham and Peter Damon; Lee DiPietro, Chairman of National Trust Insurance Services; PS Trustees Angela Brown Fischer and David Leys; PS Chairman Donald O. Ross and Executive Director Trudy Coxe. Photo by Andrea Carneiro



Photo by corbethephotography.net

Treasurer's Report

By Monty Burnham

Remarks delivered at the Preservation Society's Annual Meeting, June 16, 2011

As I was writing this report, I considered what people want to hear most of all from the Treasurer's Report. Leaving apart good news, which I can in this instance supply, I concluded that it was The End. Therefore I will try to be brief.

From a financial point of view, the fiscal year ended March 31, 2011 was a considerable success. Numbers were improved in virtually every area. Excluding endowment draw, operating revenues totalled \$15.4 million, versus a budget figure of \$14.8 million. This \$626,000 increase was driven by revenues from tickets, memberships, sales, fundraising and special events. A major source of this success was the 2.7% increase in visits, from 780,000 visits in fiscal year 2010 to nearly 801,000 visits in fiscal year 2011.

The Annual Fund also contributed significantly to this performance. Our Annual Fund, to which so many of you contribute, set another record this year, with \$663,000 in contributions. We are enormously grateful to you, as we are to Co-Chairs Elizabeth Leatherman and Paul Szápáry, who have generously agreed to chair next year's campaign as well.

Results were also enhanced by excellent controls on operating expenses. Thanks to the prudence of our department heads, operating expenses exceeded budget by only \$74,000, and most of this unbudgeted expense was attributable (i.e. linked) to higher-than-budgeted revenues.

In terms of capital expenditures, this past fiscal year we invested the final \$250,000 needed to complete the five-year, \$2.1 million exterior restoration of Chateau-sur-Mer. We also embarked on an extensive and long-overdue upgrade of our computer technology. We have installed a modern ticketing system which visitors love and which allows us to understand their preferences and habits. On this new system visitors can purchase and print tickets on the internet, which eliminates standing in a ticket-buying line. Lines in fact are declining at the PS, as with the expansion of our audio tour program, which now covers 92% of tours taken, far fewer visitors spend much time in line.

We continued to pay down the loans we took out to install The Breakers audio tour and to terminate our defined benefit pension plan. We need to generate \$450,000 a year to keep up with our loan payments and declining limits on our credit lines. This is consistent with appropriate financial management and we are very grateful to BankNewport for our strong working relationship.

During calendar year 2010, the Society paid over \$7 million in compensation to 449 individuals. Four hundred forty nine individuals translates to 197 FTE's or Full Time Equivalents, because of our many part-time and seasonal employees. It is remarkable to note that FTEs increased less than 10 percent from 1997 to 2010. In other words, we are doing much more with a very modest increase in numbers of employees. This performance is certainly worthy of a loud round of applause for all the devoted and hard-working members of the Preservation Society staff!

The trend lines for the last fiscal year were all up: visitor attendance was up, membership was up, donors and donations were up, revenues were up, operating expenses were only modestly up, even the value of our endowment increased, the general economy notwithstanding. The numbers of donors making cash contributions to the Preservation Society are worthy of special note, as they have increased more than 50% over the past five years, from slightly over 7,000 to greater than 10,500. Our membership rolls have increased on a parallel line over the past five years, which is equally exciting and illustrates the value of the Museum Experience to our visitors.

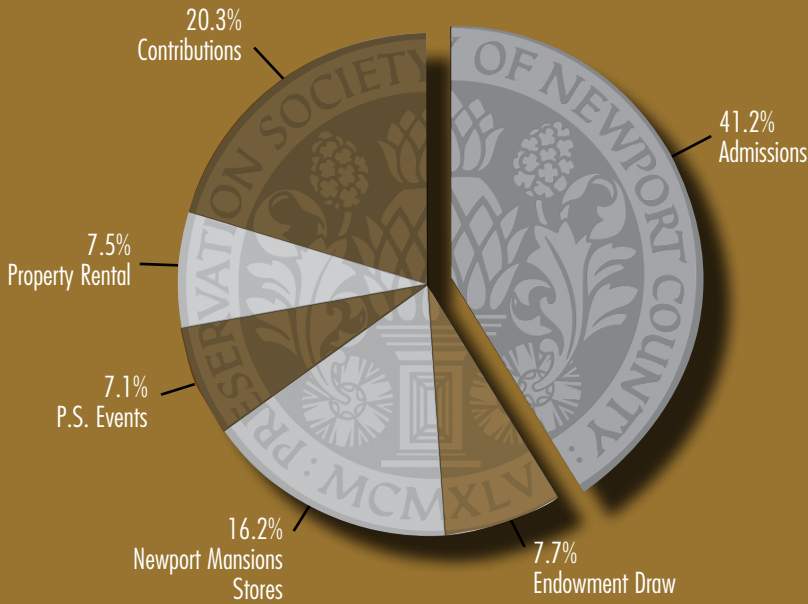
That said, the first two months of the new fiscal year have not been encouraging. We are concerned about this year. With gas prices generally rising, an apparently softening economy, and some of the coldest and rainiest spring weather in a long time, we have gotten off to a slow start financially.

The number of visitors is slightly behind last year at this time. In addition, the governor has proposed a six-percent sales tax on ticket and membership sales and a one-percent tax on non-profit purchases, which could cost the Society as much as \$600,000. Trudy and her senior staff have already responded to these threats by imposing spending restrictions, and we will be looking carefully at whatever budget bill appears from the Rhode Island state legislature.*

To leave you on a more positive note, I should point out that it is in the nature of accountants to be pessimistic. If we are not worrying about something, we wonder what we may have forgotten.

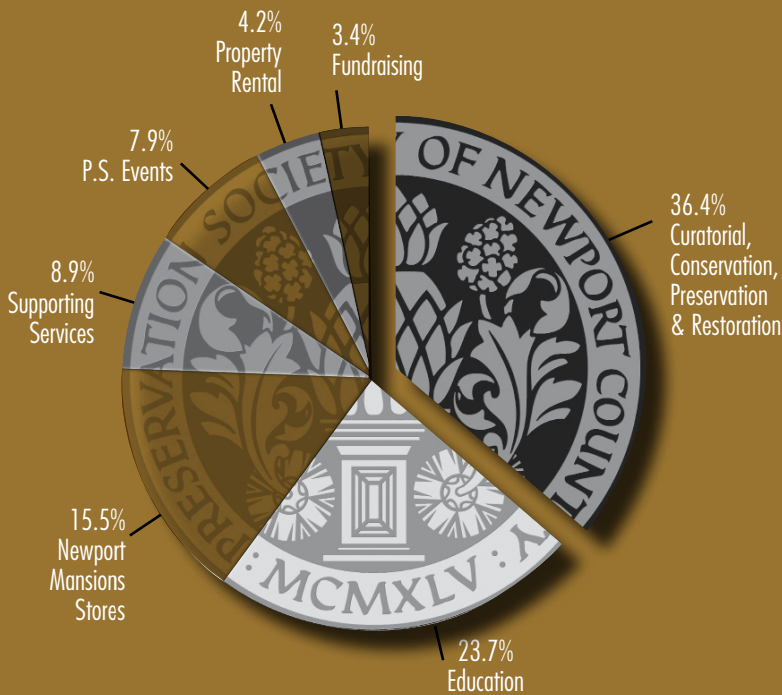
But with our extraordinarily capable staff, and the support of the Board of Trustees and the Finance Committee, financial results will be monitored and projected to the best of our ability and we will weather economic developments as we do the climate in New England.

*At the time of publication, the Governor's sales tax proposal had been defeated by the Legislature.



REVENUE

Admissions	41.2%
Contributions	20.3%
Newport Mansions Stores	16.2%
Endowment Draw	7.7%
Property Rental	7.5%
Pres. Society Events	7.1%



EXPENSES

Curatorial, Conservation, Preservation & Restoration	36.4%
Education	23.7%
Newport Mansions Stores	15.5%
Supporting Services	8.9%
Pres. Society Events	7.9%
Property Rental	4.2%
Fundraising	3.4%

Antiquarian Award 2011

William W. Corcoran, ESQ.



Photo by corbephotography.net

Donald O. Ross and William Corcoran, Esq.

*For Distinguished Service
and Untiring Devotion to the
Work of The Preservation
Society of Newport County*

William W. Corcoran, Esq. has given more than 50 years of volunteer service to the Preservation Society since he was first elected to the Preservation Society Council in 1959. During his tenure as a member of the Council, Board of Trustees, and Finance Committee, he has shared with us his vast storehouse of knowledge, wise counsel, and generous spirit.

Bill played an important role in shaping the destiny of The Preservation Society of Newport County. His legacy brings great credit upon himself and reflects well on the Preservation Society. As a Trustee and as principal legal advisor, he helped oversee the tremendous expansion of the Preservation Society from a struggling organization with one property, Hunter House, to today's internationally recognized institution with eleven historic properties, seven of which are National Historic Landmarks.

He has had a close relationship with the City of Newport for many years, having served on the Newport City Council and as a member of the Newport Redevelopment Agency in the 1960s.

He drafted the City's first historic zoning ordinance, and with much skill and deft diplomacy he represented the Preservation Society as it successfully pursued with others the creation of Newport's historic districts in an effort to stabilize and preserve the City's historic integrity.

As a member of the Preservation Society Finance Committee for many years, his keen ability to analyze the impact of every financial decision has enabled him to provide critical oversight of the Preservation Society's annual operating budget, which today is approximately \$18,000,000.

Always equipped with a grin and mirthful chuckle, Bill takes all his tasks very seriously, but never himself. He has a genuine love for the Preservation Society and his native Newport, a love that carries over to his sincere regard for the staff and many volunteers of the Preservation Society and to his fellow Newporters.

For all of these reasons, and for his overall devotion to the Preservation Society over the past 50 years, as well as his ongoing appreciation for the value of historic preservation, we are honored to confer on William W. Corcoran, Esq. the Antiquarian Award for Distinguished Service and Untiring Devotion to the Work of The Preservation Society of Newport County.

GIVEN AT NEWPORT, RHODE ISLAND

THIS 16TH DAY OF JUNE, 2011

DONALD O. ROSS

THE PRESERVATION SOCIETY OF NEWPORT COUNTY

Laurel Awards

Recognition of Outstanding Service, Artisanship or Leadership

The Laurel Award is given annually by the Preservation Society in recognition of outstanding service, artisanship or leadership in support of its mission. This year, three Laurel Awards were bestowed at the Annual Meeting in June.

David Hart

For Artisanship

In recognition of his exceptional expertise in crafting a state-of-the-art Facilities Management Plan for restoring our historic properties.



William Wilson and David Hart



Jocelyn Sherman, Pat Fernandez, Candace Morganstern and Susan Stautberg

Pat Fernandez, Candace Morganstern and Jocelyn Sherman

For Volunteerism

In recognition of their energy, creativity and inspiration as co-chairs of the Newport Flower Show.



Angela Brown Fischer, Helen Buchanan and Monty Burnham

Helen Buchanan

For Horticulture

In recognition of her knowledgeable and passionate support for the restoration of The Elms Sunken Garden and her service on The Elms House Advisory Committee and the Gardens and Grounds Committee.



Donald Ross, Dayton Carr & Vartan Gregorian



Anne & David Ford, Jr. & David Ford

Donors

April 1, 2010 – March 31, 2011

The Preservation Society of Newport County is grateful to its many members and friends for your ongoing support. Your generosity is what makes it possible for us to preserve Newport's architectural and cultural heritage.

INDIVIDUAL GIFTS

CHAMPIONS OF PRESERVATION

\$100,000 and above

Mr. and Mrs. A. Leslie Ballard
The Estate of Elizabeth A. Burton
Mr. Dayton T. Carr
Mrs. Alexander C. Cushing

\$50,000-\$99,999

Mr. David B. Ford

\$25,000-\$49,999

Mrs. Helen D. Buchanan and
Mr. and Mrs. Richard I. Burnham
Mr. and Mrs. Glenn M. Darden
Mr. Ronald Lee Fleming
Mr. and Mrs. Bernard S. Gewirtz
Mr. and Mrs. Peter D. Kiernan III
Mr. and Mrs. Eugene B. Roberts, Jr.
Mrs. Alfred S. Wilsey

CHAIRMAN'S CIRCLE

\$10,000-\$24,999

Mrs. Russell B. Aitken
Mr. and Mrs. Mortimer Berkowitz III
Mrs. Thomas W. Blake
Mr. and Mrs. Duncan A. Chapman
Mr. & Mrs. Eugene P. Conese, Sr. /
Conese Foundation
Mr. and Mrs. Edmond de La Haye Jouselin
Elizabeth Prince de Ramel
Mrs. John R. Donnell
Mr. and Mrs. Robert T. Galkin
Mr. and Mrs. Robert M. Grace
Mr. and Mrs. David E. P. Lindh
Mrs. Claiborne C. Pell
Mr. and Mrs. Frederick H. Prince IV
Mr. and Mrs. John Purdy
James and Alice Ross
Mr. and Mrs. Guy F. C. Van Pelt
Anonymous

PRESIDENT'S CIRCLE

\$5,000-\$9,999

Ms. Helen Harting Abell
Mr. and Mrs. Allan Beitchman
Mr. and Mrs. Ronald Bennett
Dr. John and Lady Romayne Bockstoce
Mr. and Mrs. John W. Brooks, Jr.
Mr. and Mrs. James F. Carlin
Ms. Candace A. Clark and
Mr. Edmund S. Borkoski II
Mr. and Mrs. Peter S. Damon
Mr. and Mrs. David W. Dangremond
Mr. and Mrs. Pierre duPont Irving
Mr. and Mrs. Michael A. Fernandez
Mr. and Mrs. Thomas F. Gilbane
Mr. Stephen L. Glascock and
Ms. Barbara van Beuren
Mrs. Robert H. I. Goddard
Mr. Joseph W. Hammer
The Honorable Esmond V. Harmsworth
Mr. and Mrs. Jeffrey Holtman
The Edward W. Kane and
Martha J. Wallace Family Foundation
M. R. Kidder Charitable Fund
Mr. and Mrs. James D. Klau/
FNZ Foundation, Inc.
Mr. and Mrs. William L. Leatherman
Mrs. Edmund Calvert Lynch, Jr.
Mr. and Mrs. William M. Matthews
Mr. and Mrs. Samuel M. Mencoﬀ
Mr. and Mrs. Louis G. Piancone
Mr. and Mrs. Frank N. Ray
Ms. Janet L. Robinson
Mr. and Mrs. Donald O. Ross
Mr. and Mrs. Charles M. Royce
Mr. Michael H. Sherman
Mr. and Mrs. A. Theodore Stautberg, Jr.
Mr. Paul L. Szápáry
Mr. and Mrs. William N. Wood Prince
Anonymous

HERITAGE CIRCLE

\$2,500-\$4,999

Mr. and Mrs. Alexander Auersperg
Mrs. Britain Bardes
Ms. Andi Barton
Mr. and Mrs. John S. Bevan
Mr. and Mrs. David L. Brodsky
Captain and Mrs. Nicholas Brown
Capt. and Mrs. W. L. Caldwell, Jr.
Mr. and Mrs. Edmund F. Capozzi, Sr.
Martha and James Chadwick
Mrs. Robert H. Charles
Mr. and Mrs. John P. Collins
Mr. and Mrs. Richard H. Comstock, Jr.
Ms. Trudy Coxe and Mr. James Gaffney
Mr. John Dalsheim
Mr. and Mrs. Vincent DiBona, Jr.
William P. and Jacalyn C. Egan -
The Duniry Foundation
Dr. and Mrs. Edwin G. Fischer
Mr. and Mrs. Paul J. S. Haigney
Mr. and Mrs. S. Matthews V. Hamilton, Jr.
Mr. and Mrs. George G. Herrick
Mr. and Mrs. Colin Keith
Mrs. Donald Breck Lamont
Mr. and Mrs. Henry C. B. Lindh
Mr. Henry S. Lynn, Jr.
Mr. Peter E. Madden
Mr. and Mrs. John K. Menoudakos
Mr. Douglas L. Newhouse and
Dr. Holly M. Bannister
Mr. Nicholas B. Scheetz
Mr. and Mrs. Robert Self
Mr. and Mrs. W. Sydnor Settle
Mr. and Mrs. J. Laurence Sheerin
Ms. Carole B. Sheffield
Mr. and Mrs. Pieter Taselaar
Mr. and Mrs. John A. van Beuren
Mr. and Mrs. Bruce R. Watts
Teryn and Karl Weintz
Mr. and Mrs. John P. White
Mr. and Mrs. Jay R. Wilson
Anonymous



Alexander & Nancy Auersperg



Deborah Royce, Susan Stautberg & Charles Royce

BENEFACTOR

\$1,000-\$2,499

Captain and Mrs. Richard G. Alexander
 Mr. and Mrs. Armin B. Allen
 Mrs. Victoria J. Avery
 Mr. and Mrs. Robert Bakish
 Mrs. Marilyn Bardes
 Mr. and Mrs. William P. Barrack
 Mr. and Mrs. Robert A. Bartlett, Jr.
 Ms. Denae Bayer and Mr. Stephen Ovren
 David and Carol Bazarzsky
 Mr. and Mrs. Robert A. Beaver
 Mr. and Mrs. Alexander Berk
 Mr. and Mrs. Philip Bilden
 Mr. George C. Bitting
 Reine and Tim Bitting
 Mr. Hank R. Boggio
 Mr. and Mrs. Hallam Boyd, Jr.
 Mrs. Ruth Hale Buchanan
 Mr. and Mrs. James M. Burress
 Ms. Andrea Carneiro
 Mr. and Mrs. Richard G. Casey
 Mr. and Mrs. George E. Clark, Jr.
 Mr. and Mrs. James J. Coleman, Jr.
 Ms. Wylene Commander and
 Mr. David L. Van Schaick
 Ms. Caroline E. Considine
 Mr. and Mrs. Ken Coquin
 Mrs. Norey Dotterer Cullen
 Mr. and Mrs. John R. Danieli
 Ms. Lucy Darden
 Mr. and Mrs. Guillaume H. de Ramel
 Mr. Peter de Savary
 Michael and Ginger Delfino
 Mrs. Maureen Dendas
 The Honorable Ruth E. Denk
 Mr. M. David Dial, Jr. and
 Ms. Linda M. Brotkin
 Mrs. Evelyn M. Dorkin and
 Ms. Amy B. Dorkin
 Ms. Courtney Dubose and
 Ms. Cheryl Dubose
 Mr. Michael Dury
 Mr. and Mrs. Howard A. Fafard
 Mr. Louis A. Fazzano
 Mrs. Katherine D. Findlay
 Mr. and Mrs. John J. Flake
 Mr. and Mrs. Mark Flegenheimer
 Mrs. George Edward Ford
 Jae and John H. French II
 Mr. and Mrs. Peter B. French
 Mr. and Mrs. Eugene W. Friedrich

BENEFACTOR

\$1,000-\$2,499 *continued*

Mr. Curtis H. Genga
 Mr. and Mrs. Michael K. Gewirz
 Mr. and Mrs. Steven Gewirz
 Mr. and Mrs. Louis M. Girard
 Mr. and Mrs. Thomas P. I. Goddard
 Mr. and Mrs. Peter W. Gonzalez
 Mr. and Mrs. John Rovensky Grace
 Mr. and Mrs. Donald Gross
 Sharon and Peter Grossman
 Mr. and Mrs. James B. Gubelmann
 Rosemary and Torrence Harder
 Mr. and Mrs. Charles B. Harper III
 Wendy and Edward Harvey
 Mr. and Mrs. Andrew P. Heaney
 Mrs. Edward F. Herrlinger
 Mrs. Charles C. Hickox
 Mr. and Mrs. Frederick H. Humphreys
 Mrs. Richard F. Hunnewell
 Ms. Ilisa Hurowitz
 Ms. Julie Jimenez
 Mr. and Mrs. Roger E. Kass
 Mr. Thomas S. Kenan III
 Mrs. Belinda Kielland
 Mr. Daniel K. Kinder
 Mr. and Mrs. Karl Kirchner
 Mr. and Mrs. David F. Kleeman
 Carolyn and Gerald Kostelny
 Mrs. M. S. Krakoff
 Ms. La Nita Kreiling
 Mr. and Mrs. Timothy Kuhn
 Mr. and Mrs. Steven Kumble
 Mr. and Mrs. Robert Lang
 Mrs. Claudia Lapin
 Patricia P. Lawrence
 Mr. and Mrs. Richard Leonard
 Mr. and Mrs. Richard Lightburn
 Mr. and Mrs. Kenneth M.P. Lindh
 Mr. and Mrs. David J. Little
 The Honorable and Mrs. Ronald K. Machtley
 Mrs. Marion Mariner
 Mr. and Mrs. Thomas J. McAndrew
 Ms. Edith S. McBean
 Mr. and Mrs. Michael P. McDonough
 Mr. John McIntosh
 Mr. Brian V.S. McKenna
 Mr. and Mrs. Earl McMillen III
 Ms. Pauline C. Metcalf
 Mr. Charles Miller III and Mr. Birch Coffey

BENEFACTOR

\$1,000-\$2,499 *continued*

Mr. Joseph Missbrenner
 Mr. and Mrs. Gary L. Moore
 Mr. Arthur W. Murphy
 Dr. and Mrs. Timothy Myers
 Mr. and Mrs. Andrew Nicoletta
 Mr. and Mrs. Joseph Odoerfer
 Mr. Roderick B. O'Hanley, Jr. and
 Mr. Richard C. Crisson
 Captain Leo N. Orsi, Jr.
 Mr. and Mrs. Brian Ross Owens
 Mrs. Stephen D. Paine
 Mrs. Bettie Pardee
 Ms. Adrienne Parker
 Mr. Brian Phoebus
 Mr. and Mrs. Robert Pilkington
 Dr. Joseph J. Plaud and
 Dr. Deborah M. Plaud
 Mr. Lowell G. Powers, Jr. Philanthropic
 Fund of The Greater Cincinnati Foundation
 Mary Gina Ratchford and Scott Ratchford
 Mr. and Mrs. Tyson C. Reed
 Dr. and Mrs. James S. Reibel
 Mr. and Mrs. Mark Rickabaugh
 Mrs. Virginia Richard
 Mr. and Mrs. Douglas R. Riggs
 Mr. and Mrs. Daniel A. Rioux
 Mr. Lloyd M. Rives*
 Mr. and Mrs. Thomas A. Rodgers III
 Mr. and Mrs. John G. Rodman
 James A. Roehm and Bonnie Pashkow*
 Mr. and Mrs. Amory Ross
 Mrs. Howard Ross
 Mr. and Mrs. Ernst Rothe
 Mr. and Mrs. Daniel Ryan
 Ms. Susan B. Schenck and
 Mr. Steven Goodwin
 Mr. and Mrs. Jay R. Schochet
 Lorraine and Richard Sebastiao
 Major General and Mrs. Stephen R. Seiter
 Mr. Adam Sharaf
 Mr. and Mrs. Edwin S. Sheffield
 Buck and Jocelyn Sherman
 Mr. and Mrs. Jeffrey Siegal
 Mr. and Mrs. Thomas A. Smith
 Mr. Phillip K. Sotel
 Mr.* and Mrs. Stephen W. Spencer
 Mr. Christopher Spitzmiller
 Mrs. Frederick M. Stafford
 Mr. and Mrs. Peter N. Stevens

BENEFACTOR

\$1,000-\$2,499 *continued*

Mr. and Mrs. Joseph F. Sullivan
 Mr. and Mrs. Patrick Sullivan
 Ms. Gladys Szápáry
 Ms. Topsy Taylor
 Mr. Tom Terne
 Mrs. Daphne S. Thornton
 Mr. Michael J. Tracey
 Mr. and Mrs. Todd Traina
 Mr. and Mrs. Andrew S. Tsimortos
 Mr. and Mrs. Bruce G. Tucker
 Mr. and Mrs. Dan C. Tutcher
 Mr. and Mrs. Archbold D. van Beuren
 Mr. and Mrs. William A. Viall
 Mr. and Mrs. Michael Vitton
 Ms. Madeleine Von Hermert
 Mr. and Mrs. Arthur H. Walker
 VADM and Mrs. Thomas R. Weschler,
 USN (Ret.)
 Sarah A. Whittemore
 Ms. Deborah E. Wiley
 Mr.* and Mrs. John G. Winslow
 Mr. and Mrs. Kenneth R. Woodcock
 Anonymous (2)

PATRON

\$500-\$999

Mrs. Charles Adams
 Ms. Marylou Addona
 Ms. Frances Ahearn
 Mr. and Mrs. Jeffery M. Allen
 Richard E. Anderson
 Mr. Edward Ankudavich and
 Ms. Rosemary Ponzio
 Mr. Cesar Nicholas Anquillare
 Mr. and Mrs. Jeffrey Aroy
 Mr. and Mrs. George F. Baker IV
 Mrs. Marianna J. Baker
 Dr. and Mrs. Richard A. Baker
 Mr. L. Eddie Ball
 Alexis Bancroft
 Mr. Eugene Baten
 Mr. Gene Baten
 Mr. Gentry Beach
 Mr. John Beebe
 Mr. and Mrs. Gerald Bernaz
 Mr. and Mrs. John F. Bohan

PATRON

*Deceased



Ronald & Kati Machrtley



Mona Beitchman & Virginia Roosevelt

\$500-\$999 *continued*

Mr. and Mrs. Richard N. Bohan
 Mr. and Mrs. Richard N. Bohan, Jr.
 Mrs. Mary K. Bond
 Mr. and Mrs. Robert A. Boulay
 Ms. Angela Bovenzi
 Mr. and Mrs. Douglas P. Braff
 Ms. Robin Brown
 Mr. and Mrs. Josiah Bunting III
 Ms. Helen M. Burnham
 Ms. Jenni Bursell
 Mrs. Deborah Burville
 Mr. and Mrs. David Bush-Brown
 Ms. Carmela Calafiore
 Mr. and Mrs. William Camp
 Mr. and Mrs. Ross S. Cann, Jr.
 Mr. Mario Cantone and Mr. Gerald Dixon
 Mrs. Ann Caprio and Mr. Charles Pasquale
 Mr. Russell Caramagno
 Mr. David Champagne
 Mr. and Mrs. Robert Chapman
 Ms. Sarah Cherian
 Mrs. E. Taylor Chewing
 Mr. and Mrs. Howard G. Chilton
 Miss Kate Chura
 Ms. Maria Clements
 Ms. Francine Coffey
 Mr. and Mrs. Lyn L. Comfort
 Mr. and Mrs. Edward B. Corcoran
 Mr. Michael R. Corcoran
 David J. Correia, Esq.
 Ms. Beth Comer
 Ms. Erika Cromier
 Dr. John Cuttino and Dr. Carolyn Dedrick
 Mr. and Mrs. Edward N. Dane
 Kenneth DeCan
 Ms. Elizabeth Deehhan
 Mr. and Mrs. Eliot W. Denault
 Mr. and Mrs. William Dennis
 Mr. Terry L. Dickinson
 Mr. Robert Dinardo
 Mr. and Mrs. Bruce Dipietro
 David Noble Dittman, Jr.
 Ms. Fran Domers
 Dr. Leo P. Donovan, Jr.
 Mr. Elijah Duckworth-Schachter
 Mr. Bartlett S. Dunbar and Ms. Lisa Lewis
 Dr. Linda Durhan and Dr. John P. Opalacz
 Mr. and Mrs. Paul C. Eddy

\$500-\$999 *continued*

Mr. and Mrs. A. Lawrence Fagan, Jr.
 Ms. Anne Fairfax
 Mr. and Mrs. Jeffrey M. Farrar
 Mr. Roger Feldenheimer
 Ms. Lisa Ferrara
 Mr. and Mrs. Robert F. Fischer
 Mr. Richard E. Ford
 Mr. and Mrs. Richard H. Dorwaldt
 Mr. and Mrs. Neal Franking
 Mrs. H. Clay Frick II
 Ms. Karen Friedrich
 Jim and Marge Fuller
 Mr. Luke Gallagher
 Mr. and Mrs. Richard Garland
 Mr. and Mrs. Douglas S. Garavanta
 Ms. Alyce Gavriel
 Ms. Christine Gendron
 Mr. and Mrs. Robert L. Gett
 Dr. Lawrence Geuss and
 Ms. Pamela Lenehan
 Mr. and Mrs. Jonathan K. Gewirz
 Mr. James Gillian
 Ms. Leslie Gillette and Mr. Jay Pallis
 Mr. Frank Giudice
 Mr. and Mrs. Peter S. Goltra
 Mr. and Mrs. Sidney S. Gorham, II
 The Honorable and Mrs. David S. Gordon
 Mr. and Mrs. Robert Grasing
 Dr. and Mrs. John T. Grady
 Mr. and Mrs. David Grant
 Mr. and Mrs. Christopher R. Greenman
 Mr. and Mrs. Robert Gregoire
 Mr. and Mrs. Richard Grosvenor
 Mr. and Mrs. N. Peter Hamilton
 Mr. and Mrs. Peter W. Harris
 Ms. Kathleen Harrington
 Ms. Karen Heagle
 Ms. Harriet P. Higgins
 Dr. and Mrs. Ronald C. Hillegass
 Mr. and Mrs. Allan Hodges
 Ms. Judith Holcomb and Mr. Richard Pope
 Mr. and Mrs. Dean Holt
 Mr. and Mrs. Lawrence Ingeneri
 Captain and Mrs. Don Jago
 Mr. and Mrs. Edward C. Johnson III
 S. Tucker Johnson and
 Charlotte E. Johnson
 Mr. Peter Kachavos

PATRON**\$500-\$999** *continued*

Ms. Dodie Kazanjian
 Ms. Kathy Keane
 Ms. Teresa Kennedy
 Mr. and Mrs. Nicolas Kerno
 Mr. and Mrs. Christopher G. Knoll
 Ms. Amy Beth Krisanda
 Ms. Deborah Lamm
 Mr. and Mrs. James Lanzillo
 Ms. Sharon C. Lawn
 Mr. and Mrs. Matthew Lech
 Mr. and Mrs. Byron L. LeFlore, Jr.
 Charles and Roxanne Leighton
 Mr. Marc A. Lewinstein
 Mr. and Mrs. Derek L. Limbocker
 Colonel Karen D. Lloyd
 Mr. and Mrs. William Lockett, Jr.
 Colonel and Mrs. Jim Londergan, Jr.
 Mr. Angelo Lopresti
 Ms. Ellen Lopresti
 Ms. Maryann Lorusso
 Ms. Karlyn Loucks
 Ms. Bridget Lyons
 Mr. Anthony Macchia
 Ms. Marjorie Madresh
 Mr. and Mrs. Peter L. Malkin
 Mr. and Mrs. Arthur J. Margolin
 Ms. Cynthia Martin
 Mr. Robert C. Marvelle
 Mr. Ferdinand E. Massari and
 Ms. Diane Lapins
 Mr. Michael H. Massey and
 Ms. Sandra Ourossoff
 Mr. and Mrs. Thomas D. Matear
 Mr. and Mrs. Frank Mauran IV
 Mr. David Mayhew
 Mr. and Mrs. John K. McColloch
 Mr. and Mrs. William E. McCole III
 Mr. Edward McDonough
 Ms. Sheila McEntee and
 Mr. Darryl B. Hazel
 Mr. Michael McMahon
 Mr. Christopher McGuire
 Ms. Lisa Mosbacher Mears
 Mr. and Mrs. Chuck Moller
 Mr. and Mrs. James E. Moore
 Ms. Gretchen Morgenson and
 Mr. Paul Devlin
 Mr. and Mrs. Juan C. Mejia
 Ms. Jane Merrill

PATRON**\$500-\$999** *continued*

Ms. Lee P. Miller
 Mr. and Mrs. George F. Moss
 Mr. and Mrs. Simon Mullaly
 Mr. and Mrs. Michael J. Murray
 Ms. Kathryn Murtagh
 Mr. Robert Napfen
 Mr. Richard A. Nelson and
 Mr. James C. Michael, Jr.
 Dr. Roland Nentwich and
 Dr. Joan Courtman
 Mr. Kenneth Nicoll
 Mr. Michael Numa
 Mrs. Margaret O'Connor
 Ms. Martha O'Connor
 Mrs. Rochelle Ohrstrom and
 Ms. Lysandra Ohrstrom
 Cynthia O'Malley
 Mrs. Eileen P. O'Reilly
 Miss Romaine Orthwein
 Mr. and Mrs. Mark Otterson
 Mr. and Mrs. Charles H. Page
 Mr. Richard S. Palmer
 Dr. Dennis Pannullo
 Mr. Daniel Paquette
 Mr. and Mrs. Stephen W. Parker
 Ms. Elizabeth Parker
 Mr. and Mrs. Ricardo Pascoe
 Ms. Kathleen Passarelli
 Dr. and Mrs. Thomas R. Patnaude
 Ms. Holly Paul
 Mr. John M. Peixinho
 Mr. and Mrs. Christopher T. H. Peil
 Mr. and Mrs. George Petrovas
 Mrs. Alberta E. Picozzi
 Mr. and Mrs. Paul Prenoveau
 Mr. David Pridham
 Ms. Lissa Quinlan
 Mr. and Mrs. Gregg Radziunas
 Ms. Octavia Porter Randolph
 Mr. Colin Rath
 Mr. and Mrs. Walter G. D. Reed
 Ms. Leslie Reichert
 Mr. and Mrs. John T. Reid
 Mr. Bryan Renehan
 Ms. Debra Richer
 Mr. and Mrs. Stuart Rieben
 Mrs. Sarah Rivard
 Mr. and Mrs. Peter A. Robichaud
 Mr. Chris Rose



Eugene & Lynn Roberts



Anne Damon & Sarah Gewirtz

PATRON

\$500-\$999 *continued*

Mr. and Mrs. Bayard Russell
 Ms. Jeanne Ryan
 Mr. Jeffrey D. Sant
 Ms. Elaine Savage
 Mr. Rounsevelle W. Schaum and
 Ms. Shirley Gordon
 Mr. and Mrs. Todd Sekundiak
 Mr. and Mrs. Arthur Sgalia
 Ms. Joanne Shannon
 Ms. Joan Shea
 Mr. Edwin S. Sheffield, Jr.
 Mrs. Albert K. Sherman
 Mrs. Cynthia Sherman
 Mr. and Mrs. Doug Schilder
 Mr. and Mrs. Timothy A. Shippee
 Mr. and Mrs. George W. Shuster
 Mr. and Mrs. Robert Sinclair
 Mr. and Mrs. James P. Stirling
 Mr. Christopher O. Sjoeklin and
 Ms. Kris Häig
 Mr. and Mrs. John Slawenski
 Mr. and Mrs. John J. Slocum, Jr.
 Mr. and Mrs. Earl E. T. Smith, Jr.
 Mrs. Page Smith
 Ms. Jane W. Smith
 Mr. Arthur Souza
 Joseph Peter Spang
 Dr. Samantha Spencer
 Mr. John Staelin
 Mr. and Mrs. Rockwell Stensrud
 Ms. Susan Stewart
 Ms. Lisa Stoller
 Ms. Rolanda Lee Sturtevant
 Ms. Jessica Taskin
 Mr. and Mrs. Adams Taylor
 Mr. and Mrs. Thomas W. Thaler
 Mr. David Thalmann
 Mr. Thomas Trainor
 Mr. Jeffrey Urbina and Ms. Gaye L. Hill
 Mr. and Mrs. Michael Van Arsdall
 Mr. and Mrs. Paul L. Veeder II
 Mr. and Mrs. Felipe Vergara
 The Honorable Paul Waickowski
 Dr. Susan W. Walker
 Mr. and Mrs. Robert S. Walker
 Mr. and Mrs. Stephen G. W. Walk
 Mr. and Mrs. William Wallace
 Mr. George H. Warren

PATRON

\$500-\$999 *continued*

Mr. and Mrs. Kenneth W. Washburn
 Mr. and Mrs. Ken West
 Ms. Deanna White
 RADM and Mrs. Glenn Whisler
 Mr. and Mrs. William F. Wilson
 Dr. and Mrs. Fayette Williams
 Ms. Katherine D. Williams
 Mr. Michael Wilus and Ms. Lenora Gange
 Ms. Marguerite Wood Lofton
 Mr. and Mrs. Peter Wragg
 Mr. Richard Zak
 Mr. Mark Zwerling
 Anonymous (3)

STEWARD

\$250-\$499

Mr. Gene-Michael Addis
 Mr. John Affleck
 Ms. Wendy Franco Almquist
 Ms. Linda Alves
 Ms. Lesley Amaral
 Mr. and Mrs. Michael T. Anthony
 Ms. Michelle Aquiar
 Mr. and Mrs. Robert Armes
 Ms. Patty Armbrust
 Dr. and Mrs. John Arnold
 Mr. and Mrs. Thomas Lyman Atkins
 Ms. Ellen Avellino
 Ms. Ann Baccari
 Ms. Marci Bailey
 Ms. Lisa Baillargeon
 Mr. and Mrs. Lee C. Bakalarski
 Mr. and Mrs. Carl S. Balko
 Mrs. William S. Barrack
 Ms. Denise Barros
 Ms. Micah Baumstein
 Mr. and Mrs. Ronald I. Becker
 Ms. Jessica Becker
 Ms. Kathleen G. Beck
 Ms. Theresa Behrendt
 Mrs. Judith Beiry
 Ms. Justine Belanger
 Ms. Heather Bellwin
 Ms. Margo Bennett
 Dr. and Mrs. William Biermann
 Mr. and Mrs. David Bigatel
 Mrs. James S. Billups
 Mrs. Kenneth H. Bitting, Jr.

STEWARD

\$250-\$499 *continued*

Mr. Frank Black and Mr. Tom Hurley
 Mrs. Camilla R. Blaffer and
 Mr. Grady Smith
 Mr. Corey D. Bobba and
 Ms. Jacinda Russell
 Mr. and Mrs. H. Dickson S. Boenning
 Mr. and Mrs. Charles P. Bolton
 Ms. Nancy K. Bond
 Mr. and Mrs. Les Bowen
 Ms. Melissa Brady
 Mr. Kenneth Branson and
 Ms. Debra Davis
 Ms. Edith Hutchinson Brewster
 Mr. and Mrs. H. William Breyer IV
 Mr. and Mrs. Mark J. Brice
 Mr. and Mrs. Richard L. Brickley, Jr.
 Mr. Brent Broszeit
 Mr. John Ashby Bryson
 Mr. William A. Buell, Jr.
 Ms. Dawn Bullsens
 Ms. Eleanor Burgess
 Mr. Daniel A. Burns
 Mr. and Mrs. Donald Buschgens
 Mr. and Mrs. Raymond W. Caine, Jr.
 Mr. and Mrs. Michael Caisse
 Mr. and Mrs. Steven A. Capecci
 Ms. Mikelin Capo
 Mr. and Mrs. Peter Capodilupo
 Dr. and Mrs. Anthony A. Caputi
 Ms. Diane G. Caram
 Ms. Loretta Carignan
 Mr. Cantu Carmen
 Mrs. Ralph E. Carpenter
 Mr. David R. Carrington
 Mr. and Mrs. Steven Casper
 Mr. Michele Cestaro
 Ms. Jamie Chavkin
 Mr. Laurence Chohen
 Ambassador and Mrs. Gene B. Christy
 Ms. Marge Christianson
 Mr. John S. Clark
 Mr. John Clod, Jr.
 Mr. and Mrs. John Cloud
 Mrs. Margaretta M. Clulow
 Dr. and Mrs. Thomas Coghlin
 Mr. and Mrs. Ivan S. Colon
 Ms. Barbara Coleman
 Mr. and Mrs. Daniel Collins
 Mr. Robert R. Coulombe, Sr. and
 Dr. Mercedes S. Coulombe
 Mr. and Mrs. Robert J. Conologue

STEWARD

\$250-\$499 *continued*

Ms. Sarah Cook
 Ms. Sylvia Couvertier-Geran
 Ms. Annalise Cowley
 Mr. and Mrs. Clint Cox
 Mr. and Mrs. Grenville Craig
 Mr. Gerry Crean and Ms. Kathy Kies
 Ms. Lynn Creighton
 Mr. and Mrs. William A. Crimmins
 Mr. and Mrs. Richard H. Cromwell
 Mr. and Mrs. Michael Cuning
 Ms. Laurie Curtin
 Ms. Linda Curvelo
 Mr. Frederick A. Cushing and
 Mrs. Caterine Milinaire
 Ms. Kristin Darby
 Mr. and Mrs. Peter J. Davey
 Dr. and Mrs. Ronald Davis
 Ms. Kristen Davies
 Mr. Steven Davies
 Mr. and Mrs. Glenn Dawson
 Mr. and Mrs. Ray DelSavio
 Ms. Michelle Denault
 Mr. Gary Dewalt
 Ms. Raquel Diaz
 Ms. Eileen Dicks
 Mrs. Jo Anne Diefenthal
 Mrs. Janet F. Doda
 Mr. and Mrs. Timothy M. Donahue
 Mr. John F. Donlon
 Mr. and Mrs. Ronald D. Vanden Dorpel
 Ms. Cathy Dorazio
 Ms. Kathleen Dowling
 Mr. Carl Draucker and
 Dr. Claire Draucker
 Mr. and Mrs. Douglas Dreyer
 Dr. and Mrs. Richard C. Drummond
 Mr. and Mrs. Neil Dubois
 Ms. Jessica Duffy
 Ms. Melissa A. Dunlap
 Mr. Thomas Eberhardt and
 Mr. Daniel Burns
 Mrs. Anne F. Edwards
 Mrs. Pearl Elion
 Mr. and Mrs. Harry Elkin
 Ms. Joy Erickson
 Miss Amanda Essex
 Ms. Mary Louise Fazzano
 Mr. Gerson Feliciano
 Mrs. Margaret Fenderson
 Ms. Pat Fenton

*Deceased



Duncan & Barbara Chapman



Elizabeth Prince de Ramel & John Brooks, Jr.

STEWARD

\$250-\$499 *continued*

Mr. and Mrs. Tylor Field II
 Mr. and Mrs. John Finn
 Mr. and Mrs. Geoffrey Fiszle
 Ms. Mary Ellen Flanagan
 Mr. and Mrs. Peter Flood
 Jack and Donna Flynn
 Mr. John J. Flynn
 Mr. and Mrs. Thomas K. Flynn
 Mr. and Mrs. Jeffrey J. Fortin
 Ms. Denise Forcello
 Mr. William H. Foulk, Jr.
 Mr. David Frambach
 Ms. Anne Fratalia and Ms. Julie Fratalia
 Mr. Thomas Freeman
 Mr. Frank Gaughen
 Miss Christina Gee
 Ms. Barbara Franciosi
 Ms. Joan S. Giacalone
 Mr. and Mrs. L. Martin Gibbs
 Mr. and Mrs. Robert V. Gilbane
 Mr. and Mrs. Richard A. Gill
 Mr. and Mrs. Russell H. Ginns
 Mr. and Mrs. David B. Glade
 Laura and Wayne Glazier
 Ms. Sheila Gleason and Mr. Jay Banerjee
 Ms. Maureen Gobbi
 Mr. and Mrs. Sid Goehring
 Ms. Barbara J. Goldsmith
 Mr. and Mrs. Walter S. Gommermann
 Ms. Nanna Goodfellow
 Mr. and Mrs. Richard H. Gordon
 Ms. Susan J. Gordon
 Ms. Toni Gordon
 Mr. Jeffrey Graeber
 Ms. Alicia Grace
 Mr. Todd Grantland
 Mr. Joseph Gratta
 Dr. Janet Burke Greene
 Ms. Michela Green
 Mr. and Mrs. Patrick Greeven
 Ms. Linda Griffin
 Maryann Guertin
 Ms. Julie Gullifer
 Mr. and Mrs. Christian A. Hafner
 Mr. and Mrs. Theodore M. Hahn
 Mr. and Mrs. Mike Halvorson
 Mr. and Mrs. Donald Hann
 Mr. and Mrs. Brian Hanna
 Mr. and Mrs. Paul Harden
 Ms. Laurie Harnisch

STEWARD

\$250-\$499 *continued*

Ms. Nancy Hartwell
 Paul and Diane Hartelius
 Mr. Michael Hasselt
 Mr. William Hatfield
 Susan Hatfield
 Mr. and Mrs. Les Hauck
 Ms. Kerri Healey
 Captain and Mrs. Kurt Henry
 Ms. Debra Henderlong
 Ms. Marybeth Jensen
 Mrs. Mimi Hernandez
 Miss Sheila Hickey
 Mr. Silvio F. Hidalgo
 Mr. Joseph Himes
 Mr. James A. Hixon and Ms. Kelly Conway
 Mr. Thomas Hockaday
 Mr. and Mrs. Bernard Holand
 Mr. and Mrs. Robert D. Horgan
 Ms. Virginia Hornaday
 Mr. and Mrs. Hal Bowen Howard
 Mr. Andrew Hughes
 Ms. Stefani Hulitar
 Mr. Dennis Huntley
 Mr. and Mrs. John Hushon
 Mr. and Mrs. Thomas Hutchinson
 Mr. Edward J. Iannone, Jr.
 Mr. William Iannucci
 Mr. and Mrs. Paul Jablansky
 Mr. William Jacklin and
 Ms. Janet Russo-Jacklin
 Mrs. Mary T. Jackson
 Mr. Jack P. Jefferies
 Mr. Jeffrey Jenkins
 Mr. and Mrs. Erik Jensen
 Captain Douglas Johnston
 Ms. Shawana Johnson
 Mr. Stuart Johnson
 Ms. Caroline Johnson
 Ms. Donna Jones
 Ms. Joanne Jones
 Ms. Jennifer Jordan
 Ms. Mary Ellen Jordan
 Ms. Michelle Joseph
 Ms. Cheri Judd
 Ms. Magdalena Jung
 Mr. Brian Kabot
 Ms. Cristina Kapustij
 Mrs. George M. Kaufman
 Dr. and Mrs. Edward M. Kaye
 Mr. James Kelly

STEWARD

\$250-\$499 *continued*

Mr. Paul Kelleher
 Ms. Lisa-Anne Kenny
 Mr. and Mrs. Kevin Keogh
 Ms. Michelle Kesselharbart
 Drs. Robert and Marie Kimelheim
 Mr. and Mrs. Roger H. King, Jr.
 Mr. Peter King II
 Mr. and Mrs. Jerome R. Kirby, Jr.
 Mr. and Mrs. Robert S. Kissam
 Mrs. Michael Case Kissel
 Ms. Siena Kissel
 Ms. Sharon Knowles
 Mr. and Mrs. Adam Konow
 Ms. Ann Korsen
 Mr. and Mrs. W. Paul Krauss
 Mr. and Mrs. Richard Krakowski
 Mrs. Renee B. Kremer
 Ms. Alicia Krol
 Mr. Michael Lambert
 Dr. and Mrs. Charles Langston
 Mr. and Mrs. Michael H. Lanza
 Mr. Clif Laporte
 Mrs. Melanie Larkin and Ms. Jane Henrie
 Mr. and Mrs. John David Lease
 Mr. David Leblanc
 Mr. and Mrs. Robert F. Leduc
 Mr. and Mrs. George Lee
 Ms. Kathleen Lee
 Mr. Thomas Levreault
 Ms. Kristen Levy
 Mr. William H. Leys
 Mr. and Mrs. David P. Leys
 Mr. and Mrs. Matthew H. Leys
 Mrs. Joyce Lilly
 Mr. Kevin Lilly
 Mr. and Mrs. Stuart Lindeman
 Mr. and Mrs. Jay Linenfelser
 Ms. Brigitte Lipa
 Mr. Ted Lipkin
 Mr. Paul L'Italien, Jr.
 Stanley and Martha Livingston
 Ambassador John L. Loeb, Jr.
 Ms. Linda Lombardi
 Dr. and Mrs. Bruce Lowry
 Mr. and Mrs. William F. Lucey III
 Mr. John Lyle
 Ms. Myrna MacDonald
 Mr. and Mrs. Colin A. MacGillivray
 Dr. and Mrs. Francis MacKay
 Ms. Tita Manice

STEWARD

\$250-\$499 *continued*

Mr. Stephen Manning
 Ms. Nicole Mannino
 Mr. Paul Marafelias
 Ms. Phyllis Marcantonio
 Ms. Laura Marden
 Ms. Deb Marlette
 Mr. and Mrs. Robert A. Marra
 The Honorable and Mrs. Robert Marsh
 Mr. and Mrs. Dustin Martin
 Ms. Stella Martin
 Mr. Christopher Martinson
 Mr. and Mrs. Robert Marvel
 Mr. and Mrs. Frank Mauran III
 Ms. Alexandria McAuliffe
 Senator John McBurney
 Mr. and Mrs. Roy McCall
 Mr. and Mrs. T. Paul McEnroe
 Dr. and Mrs. J. Robert McGhee
 Mr. and Mrs. Michael E. McGhee
 Ms. Anne McLaughlin
 Ms. M. Lynn McLaughlin
 Mr. Mark McLewin and
 Ms. Patricia Davenport
 Richard Medalie
 Mr. Terry Megrady
 Mr. Frank Micari
 Ms. Susan Miles
 Barbara Millen
 Mr. and Mrs. Edward Miller
 Mr. and Mrs. Robert G. Millar, Jr.
 Mr. and Mrs. Ted Miller
 Mr. Joseph J. Minton
 Ms. Josephine Moffet
 Mr. Blair Monroe and
 Mr. David Perryman
 Mr. and Mrs. Charles Jeffers Moore
 Ms. Deana Morin
 Mr. and Mrs. Don More
 Ms. Karen Morris
 Ms. Marjorie Morrissey
 Ms. Barbara Morse
 Ms. Colleen Morton
 Mr. and Mrs. Harry Mrozowski
 Mr. and Mrs. John D. Muggerdig
 Ms. Christine Murphy
 Mr. and Mrs. John C. Murphy
 Ms. Laura M. Murphy
 Dr. and Mrs. Michael S. Murphy
 Dr. and Mrs. Ken Nelson
 Mr. and Mrs. Bernard Nemptzow



Alice Lynch & Lynda Lindh



Laurence & Betty Lou Sheerin

STEWARD

\$250-\$499 *continued*

Mr. and Mrs. Larry Newsom
 Ms. Carol O'Malley
 Mrs. Ruth Orthwein
 Mrs. Anne N. Ott
 Ms. Yvonne Ozuna
 Ms. Ellen Page
 Mr. and Mrs. F. Michael Palmer
 Mr. and Mrs. John S. Palmer, Jr.
 Mr. and Mrs. Marc Paquette
 Mr. and Mrs. James L. Paradise
 Mr. Leon Pascucci
 Ms. Anastasia Patnaude
 Mr. and Mrs. Fred Pazmino
 Mr. Anthony G. Pennacchi
 Ms. Patricia Perkins
 Mr. and Mrs. Paul A. Perrault
 Ms. Jackie Perrett
 Mr. Steven J. Peterson
 Ms. Nancy Petrarca
 Ms. Aleksandra Phelan
 Mr. and Mrs. Brian Phillips
 Mrs. Susan Townsend Phinney
 Mr. and Mrs. Anthony Picone
 Dr. John V. Pilitsis
 Mr. and Mrs. Julian Plowright
 Mr. R. Daniel Prentiss
 Mr. and Mrs. Stephen Prest
 Mr. and Mrs. Drew Proskoe
 Mr. and Mrs. James A. Purviance
 Ms. Reagan Quigley
 Ms. Kimberly Racine
 Ms. Kathy Rainer
 Mr. Peter Rains
 Mr. Anthony J. Raitano and Dr. Sheila A. Connery
 Ms. Deborah Rau
 Mr. David Warren Ray
 Ms. Martha Read
 Ms. Janice Rebello
 Mr. and Mrs. Greg Redfield
 Ms. Mary Reeves
 Mr. Robert L. Renck, Jr. and Carol Kahn
 Mary and Al Reynolds
 Mr. and Mrs. Charles C. Richardson, Jr.
 Mr. and Mrs. Craig Richardson
 Ms. Elizabeth Riley
 Mrs. Kathleen Riley-Brown
 Ms. Robin Ringler
 Ms. Caron J. Rivera
 Ms. Laura Robitaille

STEWARD

\$250-\$499 *continued*

Mr. Bill Rochelle
 Adam Rogers
 Ms. Jennifer Rodriguez
 Pamela Rodgers
 Mr. Tim Rogers
 Ms. Lynne Roper
 Ms. Laura L. Rose and Mr. William Hall
 Mr. and Mrs. Thomas Roskelly
 Mr. and Mrs. Donald W. Ross
 Mr. Andrew Ross and
 Ms. Leslie S. George
 Mr. Wayne Rountree
 Dr. and Mrs. Stephen Rows
 Miss Leigh Anne Rowinski
 Mr. John B. Royall
 Ms. Frances A. Rubacha
 Mr. and Mrs. Fred G. Ruder III
 Mr. Michael Ruhnke
 Mr. and Mrs. Gregory Rumowicz
 Mr. and Mrs. Andrew Russell
 Mr. Donald E. Ruth III and
 Ms. Cecelia E. Hallahan
 Ms. Monica Sadler
 Ms. Karen Saint-John
 Dr. and Mrs. John J. Salesses
 Mr. Michael Sannino
 Mr. and Mrs. Dinos Santafianos
 Mr. and Mrs. Robert Savage
 Mr. Harold A. Sawyer
 Mr. Robert Schrader
 Mr. and Mrs. Charles Scheffer
 Ms. Kara Schilling
 Mr. and Mrs. Edward E. Schott
 Ms. Mary Lou Schoettler
 Mr. Thomas Schroeder
 Mr. Richard Schwarz
 Mr. and Mrs. Benjamin Scott and Family
 Mr. Turner C. Scott and
 Ms. Kathleen Pratt
 Mrs. Avery Seaman
 Mr. and Mrs. Paul Sehnert
 Ms. Kathy Seymour
 Ms. Lynne Shaw
 Mr. and Mrs. Richard B. Sheffield
 Mr. and Mrs. Timothy R. Shope
 Mr. and Mrs. Phil Shroyer
 Mr. Paul J. Sienkowski
 Mr. and Mrs. John Skiadas
 Mr. and Mrs. Bryan Skulsky
 Mr. William V. Slade

STEWARD

\$250-\$499 *continued*

Mr. and Mrs. B. Hanson Slaughter
 Mrs. Crawford K. Small
 Dr. R. Scott Smith and Ms. Donna Marino
 Mr. and Mrs. Gary L. Smith
 Mr. and Mrs. Philip Smith
 Mr. Philip Smith
 Mrs. Mary Beth Smith
 Mr. and Mrs. John Smyth
 Mr. and Mrs. Tom Soldan
 Mr. William L. Soodul
 Ms. Carol Southworth
 Ms. Mary K. Spengler
 The Honorable Fernand J. St. Germain
 Ms. Richelle A. Stacy and Mr. Jason Brossi
 Mr. and Mrs. Charles Stamm
 Mr. and Mrs. Patrick J. Stansfield
 Ms. June Staunton
 Mr. and Mrs. Fred Stavropoulos
 Mr. and Mrs. Theodore E. Stebbins, Jr.
 Mr. and Mrs. John M. Stevens
 Mr. David Stevens
 Mr. Joe Stickel and Ms. Stacey Stickel
 Ms. Pamela Stockmal
 Mr. and Mrs. Edward L. Stone
 Mr. and Mrs. Terrance L. Stowers
 Mrs. E. MacGregor Strauss
 Ms. Nina A. Straight
 Mr. and Mrs. Roger Strickland
 Mr. and Mrs. Benjamin Stucker
 Mr. Alan Sullivan
 Mr. Peter Tagliaferri
 Ms. Shoma Talbert
 Mr. and Mrs. Steven Tarr
 Mr. and Mrs. Frederic Taylor
 Mr. Donald Tefft
 Mr. and Mrs. Tony Thomas
 Ms. Gladys Thomas
 Ms. Tina Thomas
 Mr. and Mrs. Matthew W. Tillson
 Captain Michael Tollefson USN (Ret.)
 Mr. and Mrs. Asheton C. Toland
 Dr. Mary Toye
 Ms. Laura Travers
 Mr. Toni A. Trivelli
 Ms. Meredith Trudell
 Mr. and Mrs. Barry Truitt
 Ms. Debbie Tschiederer
 Mr. Donald Tufts and Ms. Susan Ross
 Ms. Aria Vaida
 Mr. Javier Valenzuela and

STEWARD

\$250-\$499 *continued*

Ms. Mary Beth Klee
 Dr. and Mrs. Bruce Vanett
 Mr. Tielman T. Van Vleck
 Mr. Robert Vaughan
 Mr. Jim E. Vegher and
 Mr. John W. Grigsby
 Mr. Michael Verga
 Ms. Julie Vilandre
 Ms. Debra Vinson and Ms. Gina Sanders
 The Honorable and Mrs. Vito A. Virzi
 Mr. and Mrs. Michael A. Waite
 Mr. Joseph Wallenburg and
 Mrs. Diana Madarasz
 Ms. Susan Walsh
 Ms. Valerie Walsh
 Mr. John Washkuhn
 Captain T. H. Watkins
 Mr. and Mrs. Paul F. Weber
 Ms. Jane Weisenstein
 Dr. and Mrs. Alan Weiss
 Ms. Megan Wenner
 Ms. Ellen West
 Mr. and Mrs. Francis J. West
 Mr. and Mrs. Malcolm F. Wheeler
 Ms. Vimalin Wheeler and
 Mr. Thomas Robinson
 Mr. Robert W. J. Wilborn and
 Mr. Patrick J. McCarthy
 Mr. and Mrs. Dudley A. Williams
 Mr. Arthur Wlodarski and
 Ms. Robin Favino
 Ms. Sharon Morrow Wollschlager
 Ms. Jean Wood
 Ms. Susan Wood and Mr. Joseph Phillips
 Ms. Richard Wojtkowiak
 Mr. Scott Wroblecki
 Ms. Susan Wurzbacher
 Mr. and Mrs. Gerald F. Cerce
 Mr. and Mrs. Brett Yacoviello
 Mr. James Yost
 Miss Lucinda Young
 Mr. and Mrs. Marshall Zamansky
 Ms. Dorothy M. Zanni
 Ms. Tara Zembrowski and
 Mr. John Coppola
 Anonymous (3)

*Deceased



Monique & Jaime Coleman, Minnie & James Coleman



Anne & Matt Hamilton

FOUNDATION GIFTS AND GRANTS

CHAMPIONS OF PRESERVATION

\$100,000 and above

- Alletta Morris McBean Charitable Trust
- The Champlin Foundations
- Institute of Museum and Library Services
- van Beuren Charitable Foundation

\$50,000-\$99,999

- Berwind Fund
- Prince Charitable Trusts
- National Endowment for the Humanities

CHAIRMAN'S CIRCLE

\$10,000-\$24,999

- William H. Donner Foundation

PRESIDENT'S CIRCLE

\$5,000-\$9,999

- Anonymous Fund of The Rhode Island Foundation
- Felicia Fund, Inc.
- J. Edgar Monroe Foundation
- Lowdon Family Foundation
- Owen Coleman Family Foundation

HERITAGE CIRCLE

\$2,500-\$4,999

- Hamilton Family Foundation

BENEFACTOR

\$1,000-\$2,499

- Ishiyama Foundation
- National Endowment for the Arts

CORPORATE GIFTS

CHAMPIONS OF PRESERVATION

\$50,000-\$99,999

- Fireman's Fund Insurance Company
- F. A. Bartlett Tree Expert Co.

\$25,000-\$49,999

- Argo Group
- Brooks Brothers
- Christie's
- Food & Wine Magazine
- Inskip Porsche
- U.S. Trust, Bank of America Private Wealth Management

CHAIRMAN'S CIRCLE

\$10,000-\$24,999

- Infiniti
- Italian Trade Commission

HERITAGE CIRCLE

\$2,500-\$4,999

- Carnegie Abbey Club LLC
- The Computer Merchant, Ltd.
- National Trust Insurance Services, LLC
- William Vareika Fine Arts, Ltd.

BENEFACTOR

\$1,000-\$2,499

- The Angell Pension Group, Inc.
- The ChemArt Company
- Bank of America
- Broadview Marketing
- Child & Family Services
- Clark's Security, Inc.
- Corcoran, Peckham, Hayes & Galvin, P.C.
- Donovan & Sons, Inc.
- Earth Share of New England
- Edwards, Angell, Palmer & Dodge
- H.V. Holland, Inc.
- Kahn, Litwin, Renza & Co., Ltd.
- Lexington Partners Inc.
- Meridian Printing, Inc.
- New England Retirement Solutions
- The OLB Foundation
- Petro Commercial Services

CORPORATE GIFTS *continued*

BENEFACTOR

\$1,000-\$2,499

- Rhode Island Economic Development Corp.
- Russell Morin Fine Catering
- Shamrock Electric, Inc.
- SHS Pest Control Corporation
- UnitedHealthcare

PATRON

\$500-\$999

- Ben & Jerry's
- BMI Technologies
- Glorious Affairs Ltd.
- Gulliver's Travel
- Kittansett Club
- T.J. Brown Landscape Contractor, Inc.
- Universal Roofing & Sheet Metal Co., Inc.
- Wainwright Investment Counsel, LLC
- WASA/Studio A

STEWARD

\$250-\$499

- Atlantic Beach Club
- Clambake Club of Newport
- Coastline Trust Company
- D.A.S. Sound Systems, LLC
- Lila Delman Real Estate
- Michael Hayes Company
- Sandra Liotus Lighting Design, LLC
- Wheaton College

MATCHING GIFT COMPANIES

- Aetna Foundation, Inc.
- Amica Companies Foundation
- AT&T Foundation
- Bank of America Charitable Foundation
- The BNY Mellon Matching Gift Program
- Carnegie Corporation of New York
- Citizens Charitable Foundation
- Computer Associates International, Inc.
- C.R. Bard Foundation
- Davidson Holdings, Inc.
- ExxonMobil Foundation
- GE Foundation
- IBM Corporation - Matching Grants Program
- The John A. Hartford Foundation, Inc.
- John Wiley & Sons, Inc.
- Johnson & Johnson Matching Gifts Program
- Key Foundation
- Microsoft Matching Gifts Program
- NSTAR Foundation
- Pfizer Foundation Matching Gifts Program
- Quadrangle Group Foundation
- UBS Matching Gifts Program
- United Technologies Matching Gifts Program
- Unum Matching Gifts Program

**Deceased*



Nancy Cushing & William Lucey



Mary Van Pelt & Arthur Murphy

MEMORIAL GIFTS

IN MEMORY OF

MR. RALPH E. CARPENTER
Mrs. Bettie Pardee

IN MEMORY OF

MR. CHARLES EASTWOOD
Mr. and Mrs. James F. Gainer

IN MEMORY OF

MS. PAULA GOLLY
Mrs. Connie Pevorus

IN MEMORY OF

MRS. DIANA D. HEPTING
Mr. John Ashby Bryson
Mrs. Ruth Hale Buchanan
The Honorable Ruth E. Denk
Mr. and Mrs. Mark Flegenheimer
Mallory F. Miree, M.D. and
Ms. Betsy Miree
Mrs. Stephen W. Spencer
Mr.* and Mrs. John G. Winslow

MEMORIAL GIFTS

IN MEMORY OF

MR. LLOYD M. RIVES
Mr. and Mrs. Rodney Armstrong
Bank of America Charitable Foundation
Mr. and Mrs. Charles Butts
Mr. and Mrs. David Case
Ms. Beverly S. Corkhill
Mr. Peter B. Gilmore and
Ms. Cynthia M. Kingsford
Mrs. John P. Glorieux
Mr. and Mrs. Edward C. Johnson III
Mrs. Jane W. Marshall
Mr. and Mrs. Richard P. McCoy
Mr. Franklin H. Moore
Mr. and Mrs. Robert E. Remis
Mrs. George R. Rowland
G. Crossan Seybolt, Jr.
Drs. Bettie and Oles Smolansky
RADM and Mrs. Joseph C. Strasser,
USN (Ret.)
Mr. and Mrs. Thomas W. Thaler
Mr. George H. Warren
Mrs. Carla Warren
Mr.* and Mrs. John G. Winslow

IN MEMORY OF

MS. BONNIE PASHKOW
Ms. Caroline E. Considine
Mr. James A. Roehm

IN MEMORY OF

MR. STEPHEN W. SPENCER
Mrs. Ruth Hale Buchanan

HONOR GIFTS

IN HONOR OF

MRS. THOMAS W. BLAKE
Mrs. Richard F. Hunnewell

IN HONOR OF

MR. DAYTON T. CARR
The Edward W. Kane and
Martha J. Wallace Family Foundation

IN HONOR OF

MRS. MARION O. CHARLES
Mr. and Mrs. Michael P. McDonough

IN HONOR OF

LUCILLE FEINSTEIN TEITZ
Ms. Rebecca Ackerman

IN HONOR OF

MRS. ROBERT T. GALKIN
Mr. and Mrs. Anthony DiBasio

IN HONOR OF

MS. BUSHNELL PEARCE HENRY
Ms. Elizabeth Pearce

IN HONOR OF

**MR. AND MRS. PETER D.
KIERNAN III**
Ishiyama Foundation

IN HONOR OF

**MR. AND MRS. MARK E.
WATSON III**
Mr. and Mrs. Byron L. LeFlore, Jr.

DONORS TO COLLECTIONS

The Berry Hill Crumney Trust
Mrs. Kimberley Dolbashian
Mrs. Helen P. Engelhardt
Estate of Mr. and Mrs.
George L. Mendonca
Mr. Paul F. Miller
Mr. Roderick B. O'Hanley, Jr. and
Mr. Richard C. Crisson
Mr. Jay J. Page
Mrs. Peter Quinn
Mrs. Margaret Berwind Schiffer
Mr. and Mrs. Richard B. Sheffield
Mr. and Mrs. John J. Slocum, Jr.
Mr. and Mrs. William J. Souza
Mr. Fredrick D. Wampler

GENERAL IN KIND DONORS

F. A. Bartlett Tree Expert Co.
Mr. and Mrs. Henry C. B. Lindh



Hope Annon & Maureen Donnell



Caroline Considine, James Berwind & Rusty Powell

**WINE AND FOOD FESTIVAL
AUCTION DONORS**

- Angela Moore
- Alaska Seafood Mkt. Institute
- Alexander Valley Vineyards
- American Public Television
- Anne Hall Antique Prints
- Aquidneck Liquors
- Bedell Cellars
- Blithewold
- Blaze East Side
- Boston Wine Expo
- Brick Alley Pub
- Brooks Brothers County Club
- Buckle and Bling
- C & R Flooring
- Campus Peddler
- Cipriano, Aldo & Debra
- CMM Designs
- Cooper Spirits Co.
- Daniele Foods
- Dierberg & Star Lane Vineyards
- Doris Foss
- Erica Zap Collection
- Field and Rose
- Food & Wine Magazine
- Fort Adams Trust
- Four Seasons Hotel
- Francis Malbone House
- Grace Emporia
- Grt. Amer. Rain Barrel Co.
- Green Mountain Coffee
- John Wm. Macy's Cheesesticks
- Institute of Contemporary Art Boston
- Tennis Hall of Fame
- Kerrygold Cheeses & Butter
- Kitchen Views at National Lumber
- KWC America Inc.
- LaCigale
- Lark Roderigues
- Laura Jeans
- Lilo
- Liza Byrd Boutique
- Lovell Designs
- Lulabels
- MacDowell Pottery
- Maret's Art
- Mija Jewelry
- Mohegan Sun
- Morely Family Vineyards

**WINE AND FOOD FESTIVAL
AUCTION DONORS *continued***

- Must Chocolate
- New England Aquarium
- New York Wine Expo
- Newport Art Museum
- Newport Breeze
- Newport Hyatt
- Newport Mkt. & Events
- Newport Restoration Foundation
- Newport Vineyards
- Norseland Inc.
- Old Yankee Cutting Boards
- Oyster Bay Wines USA Inc.
- Pernod Ricard USA
- Philip Sawyer Design
- Pomegranate Seeds
- Reign Gallery
- Relishing Dash
- Renaissance Golf Club
- Rhode Island-PBS
- Rodney Strong Vineyards
- Rota Portrait
- Russell Morin Fine Catering
- Schooner Adirondack II
- Seaport Hotel
- Smathers & Branson
- Sonoma-Loeb Vineyards
- Stone Technologies
- Susan E. Riley Designs
- Tauck
- Tallulah on Thames
- Terra Valentine Winery
- Thames Street Glass
- The Chanler
- The Hotel Viking
- Three Islands
- Tickets Bar & Grille
- Trellisman
- Trifecto Wines & Nyorady Family
- Vasco da Gamma Hall
- W & J Graham's Port
- Webbies of Westfield
- Wild Mermaid
- Williams-Sonoma
- Willow Club
- Worldwide Wines

**WINE & FOOD FESTIVAL
CORPRATE SUPPORT**

- American Public Television and Create
- Boston Wine Expo
- Clarke Luxury Showrooms
- Coca-Cola of Southeastern New England, Inc.
- Dave's Marketplace
- Hotel Viking
- Intermezzo
- Newport Hyatt
- Rhode Island Public Broadcasting Service
- Thirsty Girl
- Yankee Publishing, Inc.

**CHRISTMAS TREE &
CHRISTMAS GARLAND
DONORS**

- Ms. Dottie Berube
- Ms. Meredith Kusumoto
- Mr. John LeComte
- Ms. Margaret Ottlidge
- Mr. Bob Smith and Mr. Donald Smith

**EASTER EGG HUNT
IN KIND SUPPORT**

- Lindt Chocolates

**GOLF OUTING
IN KIND DONORS**

- Newport National Golf Club

**NEWPORT FLOWER SHOW
IN KIND CORPORATE
SUPPORT**

- Brooks Brother Country Club
- Coca-Cola of Southeastern New England, Inc.
- Harney & Sons.
- J.A.M. Materials
- Proven Winners
- Select Horticulture Inc.
- Walpole Woodworking, Inc.
- WPRI TV - CBS 12C



Eaddo Kiernan, Susan Ross & Alice Ross



Paul Szápáry & Angela Fischer



We wish to recognize our members and friends who have informed the Preservation Society of a bequest in their estate plans by warmly welcoming them into the Conservators Circle.

A bequest provision represents exceptional support of historic preservation as part of a person's social legacy. The Conservators Circle honors these individuals for their far-sighted commitments.

Mr. and Mrs. Armin B. Allen

Mr. Ruth Hale Buchanan

Mr. Dayton T. Carr

Mr. Edward Lee Cave

Mrs. Alexander C. Cushing

Mr. and Mrs. Peter S. Damon

Mr. M. David Dial, Jr. and Ms.

Linda M. Brotkin

Ms. Linda Eppich

Mrs. Edwin G. Fischer

Mr. Ronald Lee Fleming

Mr. and Mrs. Robert M. Grace

Mr. Jay C. Grutman

Mr. Joseph W. Hammer

Ms. Joya Granbery Hoyt

Mr. and Mrs. Pierre duPont Irving

Mr. Nicholas L. S. Kirkbride

Mr. Mark A. Orlando

Mr. and Mrs. Walter W. Patten, Jr.

Mr. and Mrs. Peter A. Robichaud

Mr. James A. Roehm

Mr. and Mrs. Donald O. Ross

Dr. Charles A. Ryerson III

Ms. Sandra E. Smith

Mr. Dennis E. Stark

Mrs. A. Theodore Stautberg, Jr.

Mr. A. Michael Sullivan

Mr. Richard Allen Tonne

Mr. Peter M. Walter

Anonymous 2001

Anonymous 2011

Bequests received in Fiscal Year 2011

Estate of Elizabeth A. Burton

Estate of Victor L. Persbacker

Past bequests that continue to benefit The Preservation Society of Newport County

Estate of Alice Brayton

Estate of Florence L. Fischer

Estate of Katherine B. Linz

Charitable trust of Eleanor Wood Prince

Estate of Alletta Morris McBean

Estate of George H. Parker

Estate of Benjamin C. Reed

Estate of Mrs. Anthony B. Rives

Estate of John Rovensky

Estate of Countess Anthony Szápáry

Estate of Harold B. Werner



Board of Trustees

The following individuals were elected to the Preservation Society's Board of Trustees for the 2011-2012 fiscal year at the Society's annual meeting on June 16, 2011:

OFFICERS

Chairman Emeritus
John G. Winslow*

Chairman
Donald O. Ross

Vice Chair
Angela Brown Fischer

Vice Presidents
Carol C. Ballard
David P. Leys
Angela L. Moore

Treasurer
Monty Burnham

Assistant Treasurer
Peter S. Damon

Secretary
Arthur W. Murphy, Esq.

TRUSTEES

Duncan A. Chapman
Nancy W. Cushing
Kim Darden
David B. Ford
Sarah M. Gewirz
Ala Isham
Eaddo Hayes Kiernan
Elizabeth W. Leatherman
David E.P. Lindh
William F. Lucey
Ronald K. Machtley
John D. Muggeridge
Andrew K. Reilly
Eugene B. Roberts, Jr.
Alice D. Ross
Mary Van Pelt
Mark E. Watson III
William F. Wilson
William N. Wood Prince

OVERSEERS

Marion O. Charles
Hope Drury Goddard
Jerome R. Kirby
Richard N. Sayer, Esq.
John J. Slocum, Jr.
George H. Warren
John G. Winslow*

Seated, left to right:

Kim Darden, Sarah M. Gewirz, Ala Isham, Nancy W. Cushing, Monty Burnham, Angela L. Moore, Angela Brown Fischer, Alice D. Ross, Mary Van Pelt

Standing, left to right:

David E.P. Lindh, David P. Leys, David B. Ford, Ronald K. Machtley, Peter S. Damon, William F. Wilson, William F. Lucey, Duncan A. Chapman, Mark E. Watson III, Andrew K. Reilly, Arthur W. Murphy, Esq., Eugene B. Roberts, Jr., Donald O. Ross.

Not Pictured:

Carol C. Ballard, Eaddo Hayes Kiernan, Elizabeth W. Leatherman, John D. Muggeridge, William N. Wood Prince

Photo by corbettphotography.net

OUTGOING TRUSTEES

The Preservation Society extends its sincere gratitude and appreciation to these outgoing members of the Board of Trustees for their contributions:

Richard C. Loeb, Jr.
Susan S. Stautberg

*Deceased

Full-Time Employees

OFFICE OF THE CEO & EXECUTIVE DIRECTOR

Trudy Coxé, *CEO & Executive Director*
Terry L. Dickinson
Colleen Breitenstein

COMPREHENSIVE CAMPAIGN

Mimi Falsey, *Director*

DEVELOPMENT

Caroline E. Considine, *Director*
Katherine M. Long
James A. Roehm
Kari Van Buren

EDUCATIONAL SALES

Cynthia J. O'Malley, *Director*
Kathryn M. Botelho
Maryann Hertig
Susan L. Kehoe
Laura Murphy
Bentley W. Squires
Karen G. Wheeler

FINANCE

James M. Burress, *Director*
Jennifer E. Clinton
Hugh Collard
Janet F. Doda
Judith D. James

GARDENS AND GROUNDS

Jeffrey T. Curtis, *Director*
Anthony R. Aguiar
Rebecca L. Bonnenfant
James Donahue
Thomas D. Downes
Luis F. Francisco
Thomas N. Kelly
James P. Levitre
Michael Logan
Robert Marvelle, Jr.
Eugene Platt
Charissa Rogers



Gardens & Grounds Director Jeff Curtis works in the cutting gardens.
Photo by Andrea Carneiro

MUSEUM AFFAIRS

John R. Tschirch, *Director*
John Bartosh
Charles J. Burns
Caitlin M. Emery
Paul F. Miller
Charles J. Moore
Miranda L. Peters
Patricia M. Petersen
Maria J. Petisca
Jessica L. Urick

MUSEUM EXPERIENCE

John G. Rodman, *Director*
Jo Ann Blumsack
David E. Boenning
Andrea Carneiro
Ivan S. Colon
Patricia R. Dias
Kimberly F. Dolbashian
Daniel P. Fryer
Debbie Kammerer
Lucy A. Kinsley
Kelly A. McDermott
Judith Moniz
Alberta T. Picozzi
Robert Regalbutto
Barbara A. Shea
Carol A. Velasco
Donato T. Ziuarella

PROPERTIES

Curtis H. Genga, *Director*
Virgilio G. Aguiar
James A. Aull
Robert A. Beebe, Jr.
Jeffrey D. Boyark
Kenneth Breitenstein
Margaret Cavaliere
James H. Cottrell
Bryan T. Coyne
Maryanne N. Craft
Brian E. Faria
Stephen P. Golda
Nicole Hatzberger
Gilbert W. Lawrence
Robert C. Marvelle
Harold F. Mathews
Pauline McGrady-Keneshea
William D. Miranda, Jr.
William R. Murphy
David J. Oakley
Patricia Pasvolsky
Theresa M. Peckham
Christine G. Pickens
Thomas Pickens
Robert A. Raffa
Patricia Stetson
Betsy A. Vivieros
Robert G. Watterson
Philip D. Woolhouse
Theresa Wyatt

SPECIAL EVENTS

Philip F. Pelletier, *Director*
Ashley L. Courington
Beverly Ware



2010-2011 Annual Report
 Editor: Andrea Carneiro
 Design: Roskelly Inc.
 Printing: Meridian Printing

© 2011 The Preservation Society of Newport County
 424 Bellevue Avenue
 Newport, RI 02840
 (401) 847-1000
www.NewportMansions.org

OUR MISSION

Great Houses connect people to a nation’s heritage and open windows to another age. The Preservation Society of Newport County is a non-profit organization whose mission is to protect, preserve, and present an exceptional collection of house museums and landscapes in one of the most historically intact cities in America. We hold in public trust the Newport Mansions which are an integral part of the living fabric of Newport, Rhode Island. These sites exemplify three centuries of the finest achievements in American architecture, decorative arts, and landscape design spanning the Colonial era to the Gilded Age. Through our historic properties, educational programs, and related activities we engage the public in the story of America’s vibrant cultural heritage. We seek to inspire and promote an appreciation of the value of preservation to enrich the lives of people everywhere.

PRESERVATION SOCIETY PROPERTIES

- Arnold Burying Ground (1675)
- Hunter House (circa 1748)
- Kingscote (1839-1841)
- Chateau-sur-Mer (1851-1852)
- Green Animals Topiary Garden (circa 1860)
- Chepstow (1860-1861)
- Isaac Bell House (1881-1883)
- 424 Bellevue Avenue (1887-1888)
- Marble House (1888-1892)
- The Breakers (1893-1895)
- The Breakers Stable & Carriage House (1895)
- The Elms (1899-1901)
- Rosecliff (1899-1902)
- Rovensky Park (1959)

Front Cover: The Breakers “This Place Matters”
 Photo by Roskelly.com

Back Cover: Diner Dance at Marble House, August 2010
 Photo by corbettphotography.net



1

1. The Elms. Photo by corbettphotography.net
2. Artist Thomas Arvid works on a painting at the Newport Mansions Wine & Food Festival. Photo by Andrea Carneiro
3. Less Ballard with his daughter Lesley Hull and granddaughter Catherine. Photo by Andrea Carneiro
4. Robert & Kate Bartlett with Donald O. Ross at the Newport Flower Show. Photo by corbettphotography.net
5. Living statues in historic garb at the Newport Flower Show. Photo by corbettphotography.net
6. Dorrance Hamilton. Photo by Andrea Carneiro
7. AnaPaula Watson, Barbara Chapman, Sheri Grace and Alice Ross. Photo by corbettphotography.net
8. Young guests enjoy the Green Animals Children’s Party. Photo by Andrea Carneiro



2

Thank you to our donors for their charitable contributions to the Preservation Society’s mission.

National Trust Insurance Services, LLC
 an affiliated entity of
 NATIONAL TRUST FOR HISTORIC PRESERVATION



The Newport Daily News



3



4



5



6



7



8



THE PRESERVATION SOCIETY OF NEWPORT COUNTY
424 BELLEVUE AVENUE
NEWPORT, RI 02840

NON-PROFIT ORG
U.S. POSTAGE
P A I D
THE PRESERVATION
SOCIETY OF
NEWPORT COUNTY

THE PRESERVATION SOCIETY OF NEWPORT COUNTY
401-847-1000 • Fax 401-847-1361 • www.NewportMansions.org
Accredited by the American Association of Museums

